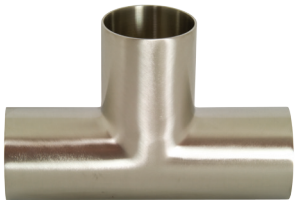


**Clamp Tees - B7MP**

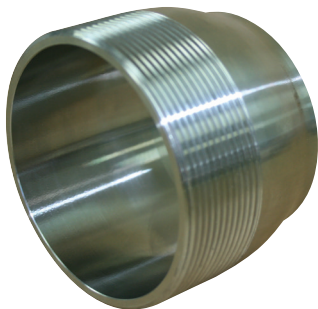
316L Stainless Steel		
Part No.	Size (inch)	Price \$
B7MP-R100	1	168.43
B7MP-R150	1½	176.03
B7MP-R200	2	241.26
B7MP-R250	2½	306.32
B7MP-R300	3	385.15
B7MP-R400	4	630.84

**Clamp Concentric Reducers - B3114MP**Price Group: DS  
AV08

316L Stainless Steel		
Part No.	Size (inch)	Price \$
B3114MP-R150100	1½ x 1	92.22
B3114MP-R200100	2 x 1	134.68
B3114MP-R200150	2 x 1½	87.38
B3114MP-R250200	2½ x 2	126.66
B3114MP-R300150	3 x 1½	200.82
B3114MP-R300200	3 x 2	189.06
B3114MP-R300250	3 x 2½	155.11
B3114MP-R400200	4 x 2	334.45
B3114MP-R400250	4 x 2½	316.64
B3114MP-R400300	4 x 3	277.72

Price Group: DS  
AV08**Polished Tees - Butt Weld / Long Tee - B7W**

Polished 316L Stainless Steel		
Part No.	Size (inch)	Price \$
B7W-R50P	½	61.58
B7W-R100P	1	33.54
B7W-R150P	1½	40.14
B7W-R200P	2	65.24
B7W-R250P	2½	91.55
B7W-R300P	3	137.33
B7W-R400P	4	197.13

Price Group: DS  
AV08**BSP Tube Adaptors**

316L Stainless Steel		
Part No.	Size (inch)	Price \$
B19WB-R50A	½	30.32
B19WB-R75A	¾	35.99
B19WB-R100A	1	36.50
B19WB-R150A	1½	51.64
B19WB-R200A	2	66.70
B19WB-R250A	2½	109.02
B19WB-R300A	3	135.09
B19WB-R400A	4	169.22

Price Group: DS  
AV08