

Polished Reducers - Butt Weld Concentric Reducer - B31W

Polished 316L Stainless Steel		
Part No.	Size (inch)	Price \$
B31W-R075050P	¾ x ½	36.03
B31W-R10050P	1 x ½	33.18
B31W-R10075P	1 x ¾	23.15
B31W-R150100P	1½ x 1	33.18
B31W-R200100P	2 x 1	55.36
B31W-R200150P	2 x 1½	27.29
B31W-R250150P	2½ x 1½	54.70
B31W-R250200P	2½ x 2	38.75
B31W-R300150P	3 x 1½	90.83
B31W-R300200P	3 x 2	77.97
B31W-R300250P	3 x 2½	48.75
B31W-R400200P	4 x 2	163.47
B31W-R400250P	4 x 2½	145.04
B31W-R400300P	4 x 3	114.42

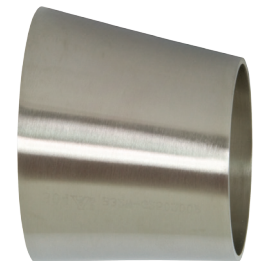
Price Group: DS
AV08



Polished Reducers - Butt Weld Eccentric Reducer - B32W

Polished 316L Stainless Steel		
Part No.	Size (inch)	Price \$
B32W-R150100P	1½ x 1	74.83
B32W-R200100P	2 x 1	84.89
B32W-R200150P	2 x 1½	57.59
B32W-R250150P	2½ x 1½	66.88
B32W-R250200P	2½ x 2	66.88
B32W-R300150P	3 x 1½	104.54
B32W-R300200P	3 x 2	85.61
B32W-R300250P	3 x 2½	75.80
B32W-R400200P	4 x 2	187.85
B32W-R400250P	4 x 2½	166.80
B32W-R400300P	4 x 3	123.70

Price Group: DS
AV08



H

45° Clamp Elbows - B2KMP

316L Stainless Steel		
Part No.	Size (inch)	Price \$
B2KMP-R100	1	64.40
B2KMP-R150	1½	74.04
B2KMP-R200	2	93.07
B2KMP-R250	2½	135.15
B2KMP-R300	3	166.21
B2KMP-R400	4	297.71
B2KMP-R600	6	2453.57

Price Group: DS
AV08



90° Clamp Elbows - B2CMP

316L Stainless Steel		
Part No.	Size (inch)	Price \$
B2CMP-R100	1	68.10
B2CMP-R150	1½	80.09
B2CMP-R200	2	102.10
B2CMP-R250	2½	140.12
B2CMP-R300	3	188.21
B2CMP-R400	4	364.29
B2CMP-R600	6	1584.29

Price Group: DS
AV08

