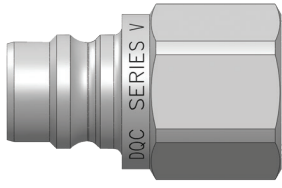
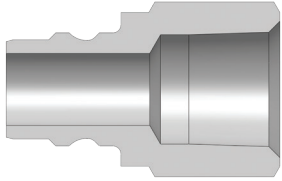


V-Series Snap-Tite H/H Interchange Unvalved Nipples



Female Thread



Size (inch)	Part No.	Female Thread Size (inch)	Body Material	Weight (kg)	Pkg Qty		Price \$ (ea)
					Bag	Box	
1/4	V2F2-E	1/4 - 18 NPTF	Steel	0.02	5	50	19.11
1/4	V2F2-B-E	1/4 - 18 NPTF	Brass	0.03	5	50	46.28
1/4	V2F2-SS-E	1/4 - 18 NPTF	316 SS	0.03	5	50	58.28
1/4	V2BF2-E	1/4 - 19 BSPP	Steel	0.02	5	50	24.20
1/4	V2BF2-B-E	1/4 - 19 BSPP	Brass	0.02	5	50	48.20
1/4	V2BF2-SS-E	1/4 - 19 BSPP	316 SS	0.02	5	50	46.10
3/8	V3F3-E	3/8 - 18 NPTF	Steel	0.04	5	50	40.21
3/8	V3F3-B-E	3/8 - 18 NPTF	Brass	0.04	5	50	162.37
3/8	V3F3-SS-E	3/8 - 18 NPTF	316 SS	0.04	5	50	57.22
3/8	V3BF3-E	3/8 - 19 BSPP	Steel	0.04	5	50	41.30
3/8	V3BF3-B-E	3/8 - 19 BSPP	Brass	0.04	5	50	33.80
3/8	V3BF3-SS-E	3/8 - 19 BSPP	316 SS	0.04	5	50	49.50
1/2	V4F4-E	1/2 - 14 NPTF	Steel	0.08	5	25	34.28
1/2	V4F4-B-E	1/2 - 14 NPTF	Brass	0.08	5	25	30.93
1/2	V4F4-SS-E	1/2 - 14 NPTF	316 SS	0.08	5	25	65.85
1/2	V4BF4-E	1/2 - 14 BSPP	Steel	0.08	5	25	53.60
1/2	V4BF4-B-E	1/2 - 14 BSPP	Brass	0.08	5	25	28.30
1/2	V4BF4-SS-E	1/2 - 14 BSPP	316 SS	0.08	5	25	66.13
3/4	V6F6-E	3/4 - 14 NPTF	Steel	0.10	5	20	31.96
3/4	V6F6-B-E	3/4 - 14 NPTF	Brass	0.10	5	20	25.13
3/4	V6F6-SS-E	3/4 - 14 NPTF	316 SS	0.10	5	20	78.84
3/4	V6BF6-E	3/4 - 14 BSPP	Steel	0.10	5	20	23.10
3/4	V6BF6-B-E	3/4 - 14 BSPP	Brass	0.10	5	20	24.70
3/4	V6BF6-SS-E	3/4 - 14 BSPP	316 SS	0.10	5	20	78.40
1	V8F8-E	1 - 11 1/2 NPTF	Steel	0.17	-	10	41.50
1	V8F8-B-E	1 - 11 1/2 NPTF	Brass	0.17	-	10	41.98
1	V8F8-SS-E	1 - 11 1/2 NPTF	316 SS	0.17	-	10	130.75
1	V8BF8-E	1 - 11 BSPP	Steel	0.17	-	10	36.90
1	V8BF8-B-E	1 - 11 BSPP	Brass	0.18	-	10	42.10
1	V8BF8-SS-E	1 - 11 BSPP	316 SS	0.17	-	10	87.00
1 1/4	V10F10-E	1 1/4 - 11 1/2 NPTF	Steel	0.26	-	10	128.19
1 1/4	V10F10-B-E	1 1/4 - 11 1/2 NPTF	Brass	0.25	-	10	131.84
1 1/4	V10BF10-E	1 1/4 - 11 BSPP	Steel	0.27	-	10	122.00
1 1/4	V10BF10-B-E	1 1/4 - 11 BSPP	Brass	0.29	-	10	73.30
1 1/2	V12F12-E	1 1/2 - 11 1/2 NPTF	Steel	0.38	-	5	88.02
1 1/2	V12F12-B-E	1 1/2 - 11 1/2 NPTF	Brass	0.38	-	5	267.22
1 1/2	V12F12-SS-E	1 1/2 - 11 1/2 NPTF	316 SS	0.38	-	5	141.84
2	V16F16-E	2 - 11 1/2 NPTF	Steel	0.61	-	5	142.61
2	V16F16-SS-E	2 - 11 1/2 NPTF	316 SS	0.61	-	5	232.67

Price Group: PC

AP11

FOR TECHNICAL GUIDELINES PLEASE REFER TO PAGE 322



1300 134 651
dixonvalve.com.au

All prices exclude GST.
ADPL718