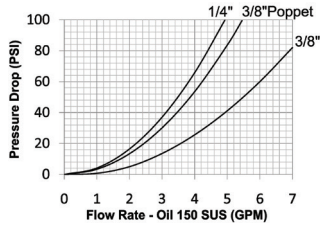


T-Series High Pressure Screw-Together



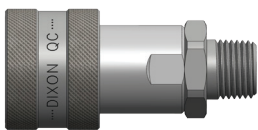
Materials:	<ul style="list-style-type: none"> Machined components are manufactured using solid steel or 316 stainless steel bar stock. Chrome steel ball valve is mechanically seated to improve low pressure sealing performance. Steel componentry is plated using ROHS Compliant Trivalent Chrome. Steel nipples are machined from solid high strength steel bar stock.
Seal Components:	<ul style="list-style-type: none"> Urethane seal is standard in ball valve couplers and provides resistance to extrusion when subjected to high pressure - temperature range is -40°C to 82°C. Nitrile seals are standard in poppet valve couplings, providing a temperature range of -40°C to 121°C.
Interchange Data:	<ul style="list-style-type: none"> High pressure screw-together interchange Parker/Pioneer 3000 Series, Stucchi IVHP Hansen WS56000, Snap-Tite 76-Series, DNP PVM RYCO R100 Series

Size (inch)	Steel Ball Coupler / Plug Coupled				316 SS Ball Coupler / Plug Coupled				Steel Poppet Coupler / Plug Coupled				316 SS Poppet Coupler / Plug Coupled			
	Working Pressure		Burst Pressure		Working Pressure		Burst Pressure		Working Pressure		Burst Pressure		Working Pressure		Burst Pressure	
	PSI	Bar	PSI	Bar	PSI	Bar	PSI	Bar	PSI	Bar	PSI	Bar	PSI	Bar	PSI	Bar
1/4	10000	700	34300	2350	-	-	-	-	-	-	-	-	-	-	-	-
3/8	10000	700	30000	2050	10000	700	30900	2100	10000	700	36800	2500	10000	700	36500	2500

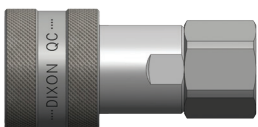
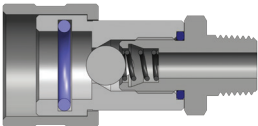
Interchange Standards					Functional Parameters				
Size (inch)	US Military	US Government	International Standards	ANSI / NFPA Standards	Valve Style	Air Inclusion	Fluid Loss	Vacuum Inch HG	Flow (Lpm) ΔP = 60 PSI
1/4	-	-	ISO 14540	-	Ball	0.97	0.56	N/R	14
3/8	-	-	ISO 14540	-	Ball	2.04	0.98	N/R	16
3/8	-	-	ISO 14540	-	Poppet	1.56	0.77	N/R	22

T-Series Interchange						
Size (inch)	Parker / Pioneer	Stucchi	Holmbury	Enerpac™ - C604	Snap-Tite	Hansen
1/4	Series 3000	IVHP	HPA Series	-	76 Series	WS 5600
3/8	Series 3000	IVHP	HPA Series	-	76 Series	WS 5600

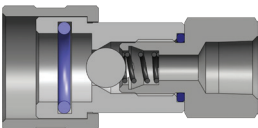
T-Series Couplers



Male Thread



Female Thread



Size (inch)	Part No.	Thread Size (inch)	Body Material	Weight (kg)	Pkg Qty		Price \$ (ea)
					Bag	Box	
1/4	2TM2	1/4 - 18 NPTF	Steel	0.11	5	50	38.90
3/8	3TM3	3/8 - 18 NPTF	Steel	0.22	5	25	43.54
3/8	3TBM3	1.9 TPI	Steel	0.22	5	25	40.16
3/8	3TM3-SS	3/8 - 18 NPTF	316 SS	0.22	5	25	263.12

Price Group: PC
AP09

Size (inch)	Part No.	Thread Size (inch)	Body Material	Weight (kg)	Pkg Qty		Price \$ (ea)
					Bag	Box	
3/8	3TF3	3/8 - 18 NPTF	Steel	0.22	5	25	41.59

Price Group: PC
AP09

- ORB thread styles also available.
- A complete range of seal options are available.



1300 134 651
dixonvalve.com.au

All prices exclude GST.
ADPL718