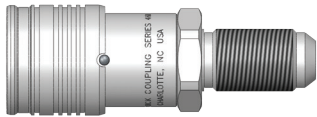
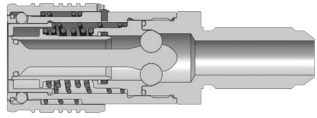


HT-Series Couplers - Bulkhead



Male Bulkhead Thread



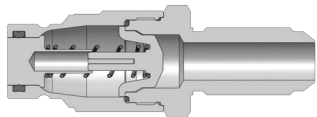
Size (inch)	Part No.	Thread Size (inch)	Body Material	Weight (kg)	Pkg Qty		Price \$ (ea)
					Bag	Box	
½	4HTJB5	¾ - 14 JIC BH	Steel	0.49	-	20	162.33
½	4HTRB5	1 - 14 ORFS BH	Steel	0.50	-	20	173.40
½	4HTJB6	1½ - 12 JIC BH	Steel	0.55	-	20	276.33

Price Group: PC
AP08

HT-Series Nipples - Bulkhead



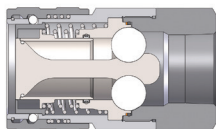
Male Bulkhead Thread



Size (inch)	Part No.	Thread Size (inch)	Body Material	Weight (kg)	Pkg Qty		Price \$ (ea)
					Bag	Box	
½	HT4JB5	¾ - 14 JIC BH	Steel	0.19	-	20	112.79
½	HT4RB5	1 - 14 ORFS BH	Steel	0.22	-	20	147.65
½	HT4JB6	1½ - 12 JIC BH	Steel	0.24	-	20	163.86

Price Group: PC
AP08

HT-Series Couplers



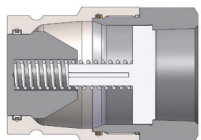
Female Thread



Size (inch)	Part No.	Thread Size (inch)	Body Material	Weight (kg)	Pkg Qty		Price \$ (ea)
					Bag	Box	
1½	12HTF12	1½" - 11½ NPT	Steel	4.1	-	1	967.22
1½	12HTBF12	1½ - 11 BSPP	Steel	4.1	-	1	962.78
1½	12HTOF12	1½" - 12 ORB	Steel	4.1	-	1	965.20
2	16HTF16	2" - 11½ NPTF	Steel	6.26	-	1	2074.22
2	16HTBF16	2" - 11 BSPP	Steel	6.26	-	1	2085.11
2	16HTOF16	2½" - 12 ORB	Steel	6.26	-	1	2087.17

Price Group: PC
AP08

HT-Series Nipples



Female Thread



Size (inch)	Part No.	Thread Size (inch)	Body Material	Weight (kg)	Pkg Qty		Price \$ (ea)
					Bag	Box	
1½	HT12F12	1½" - 11½ NPT	Steel	1.6	-	1	412.45
1½	HT12BF12	1½ - 11 BSPP	Steel	1.6	-	1	307.15
1½	HT12OF12	1½" - 12 ORB	Steel	1.6	-	1	307.15
2	HT16F16	2" - 11½ NPTF	Steel	2.31	-	1	503.38
2	HT16BF16	2" - 11 BSPP	Steel	2.31	-	1	498.11
2	HT16OF16	2½" - 12 ORB	Steel	2.31	-	1	547.72

Price Group: PC
AP08

- NPTF & ORB thread styles also available.
- A complete range of seal options are available.

FOR TECHNICAL GUIDELINES PLEASE REFER TO PAGE 296



1300 134 651
dixonvalve.com.au

All prices exclude GST.
ADPL718