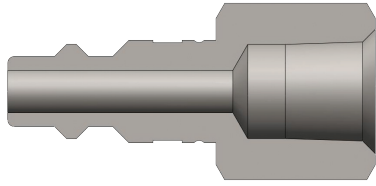
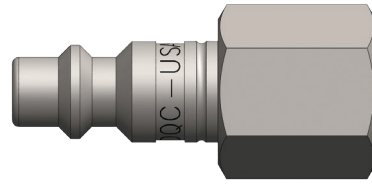


DF-Series Industrial Interchange Nipple



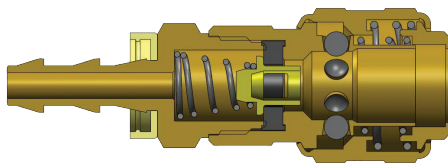
Female Thread



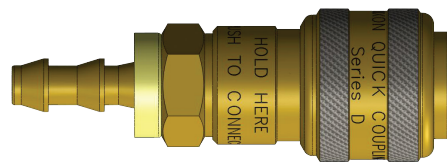
Body (inch)	Part No.	Thread (inch)	Body Material	Weight (kg)	Pkg Qty		Price \$ (ea)
					Bag	Box	
1/4	D2F1	1/8 - 27 NPTF	Steel	0.01	10	100	4.77
1/4	D2F2	1/4 - 18 NPTF	Steel	0.01	10	100	3.65
1/4	D2F2-B	1/4 - 18 NPTF	Brass	0.02	10	100	5.08
1/4	D2F2-S	1/4 - 18 NPTF	303 SS	0.02	10	100	11.92
1/4	D2BF2	1/4 - 19 BSPP	Steel	0.01	10	100	7.91
1/4	D2F3	3/8 - 18 NPTF	Steel	0.04	10	100	5.71
1/4	D2F3-B	3/8 - 18 NPTF	Brass	0.04	10	100	11.55
1/4	D2F3-S	3/8 - 18 NPTF	303 SS	0.04	10	100	36.88
1/4	D2BF3	3/8 - 19 BSPP	Steel	0.04	10	100	11.62
3/8	D3F2	1/4 - 18 NPTF	Steel	0.03	10	50	5.68
3/8	D3F3	3/8 - 18 NPTF	Steel	0.04	10	50	6.19
3/8	D3F3-B	3/8 - 18 NPTF	Brass	0.04	10	50	15.75
3/8	D3F3-S	3/8 - 18 NPTF	303 SS	0.04	10	50	19.56
3/8	D3BF3	3/8 - 19 BSPP	Steel	0.04	10	50	14.02
3/8	D3F4	1/2 - 14 NPTF	Steel	0.06	10	50	9.45
1/2	D4F3	3/8 - 18 NPTF	Steel	0.05	10	50	9.19
1/2	D4F4	1/2 - 14 NPTF	Steel	0.08	10	50	10.64
1/2	D4F4-B	1/2 - 14 NPTF	Brass	0.09	10	50	14.88
1/2	D4F4-S	1/2 - 14 NPTF	303 SS	0.08	10	50	28.64
1/2	D4BF4	1/2 - 14 BSPP	Steel	0.08	10	50	18.33
1/2	D4F6	3/4 - 14 NPTF	Steel	0.12	10	50	17.35
1/2	D4F6-B	3/4 - 14 NPTF	Brass	0.12	10	50	17.32
3/4	D6F4	1/2 - 14 NPTF	Steel	0.10	5	20	33.18
3/4	D6F8	1 - 11 1/2 NPTF	Steel	0.21	5	20	39.33

Price Group: PC
AN01

D-Series Automatic Industrial Interchange Coupler



Push-Loc Barb



Body Size (inch)	Part No.	Hose ID (inch)	Body Material	Weight (kg)	Pkg Qty		Price \$ (ea)
					Bag	Box	
1/4	2DB2-B	1/4	Brass	0.12	10	100	28.45
1/4	2DB3-B	3/8	Brass	0.13	10	100	29.79
3/8	3DB3-B	3/8	Brass	0.19	10	50	134.29
1/2	4DB4-B	1/2	Brass	0.25	5	30	136.77

Price Group: PC
AN01

FOR TECHNICAL GUIDELINES PLEASE REFER TO PAGE 260

