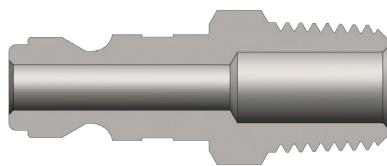
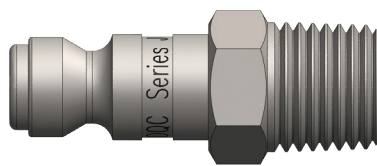


### J-Series Truflate Interchange Nipple



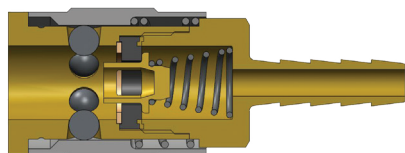
Male Thread



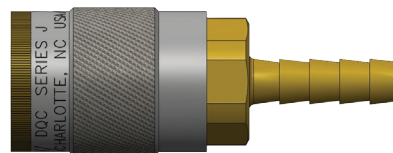
Body Size (inch)	Part No.	Threads	Material	Length		Maximum OD		Hex (inch)	Weight (kg)	Pkg Qty		Price \$ (ea)
				inch	mm	inch	mm			Bag	Box	
¼	J2M1	¼ - 27 NPTF	Steel	1.47	37.3	0.58	14.7	½	0.02	10	100	9.88
¼	J2M2	¼ - 18 NPTF	Steel	1.59	40.4	0.65	16.5	⅝	0.02	10	100	19.54
¼	J2M2-B	¼ - 18 NPTF	Brass	1.59	40.4	0.65	16.5	⅝	0.02	10	100	5.32
¼	J2M3	⅜ - 18 NPTF	Steel	1.65	41.9	0.79	20.1	11/16	0.02	10	100	16.44
⅜	J3M3	⅜ - 18 NPTF	Steel	1.84	46.7	0.79	20.1	11/16	0.04	10	50	9.04
⅜	J3M4	½ - 14 NPTF	Steel	2.00	50.8	1.01	25.7	7/8	0.05	10	50	30.33
½	J4M3	⅝ - 18 NPTF	Steel	2.20	55.9	0.79	20.1	11/16	0.06	10	50	8.20
½	J4M4	½ - 14 NPTF	Steel	2.35	59.7	1.01	25.7	7/8	0.07	10	50	10.36
½	J4M6	¾ - 14 NPTF	Steel	2.51	63.8	1.23	31.2	1 1/16	0.11	10	50	49.94

Price Group: PC  
AN11

### J-Series Truflate Interchange Coupler



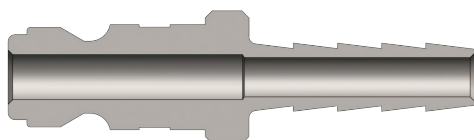
Standard Hose Barb



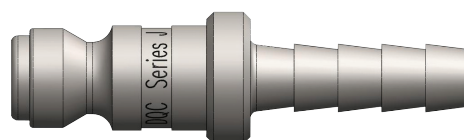
Body Size (inch)	Part No.	Hose ID (inch)	Material	Length		Maximum OD		Hex (inch)	Weight (kg)	Pkg Qty		Price \$ (ea)
				inch	mm	inch	mm			Bag	Box	
¼	2JS2-B	¼	Brass	2.53	64.3	0.88	22.4	¾	0.08	10	100	17.59
¼	2JS3-B	⅜	Brass	2.53	64.3	0.88	22.4	¾	0.08	10	100	17.56
⅜	3JS2	¼	Steel	2.86	72.6	1.06	26.9	7/8	0.12	10	50	34.72
⅜	3JS4	½	Steel	2.86	72.6	1.06	26.9	7/8	0.12	10	50	24.41
½	4FS3	⅝	Steel	3.49	88.6	1.19	30.2	1	0.18	5	30	33.11
½	4FS4	½	Steel	3.49	88.6	1.19	30.2	1	0.19	5	30	32.11
½	4FS6	¾	Steel	3.49	88.6	1.19	30.2	1	0.21	5	30	33.26

Price Group: PC  
AN11

### J-Series Truflate Interchange Nipple



Standard Hose Barb



Body Size (inch)	Part No.	Hose ID (inch)	Material	Length		Maximum OD		Hex (inch)	Weight (kg)	Pkg Qty		Price \$ (ea)
				inch	mm	inch	mm			Bag	Box	
¼	J2S2	¼	Steel	1.99	50.5	0.56	14.2	-	0.02	10	100	15.74
¼	J2S3	⅜	Steel	1.99	50.5	0.56	14.2	-	0.02	10	100	8.25
⅜	J3S2	¼	Steel	2.18	55.4	0.75	19.1	-	0.03	10	50	36.67
⅜	J3S4	½	Steel	2.18	55.4	0.75	19.1	-	0.04	10	50	24.38
½	J4S3	⅝	Steel	2.54	64.5	0.75	19.1	-	0.03	10	50	57.55
½	J4S4	½	Steel	2.54	64.5	0.75	19.1	-	0.05	10	50	11.08
½	J4S6	¾	Steel	2.54	64.5	0.94	23.9	-	0.08	10	50	17.49

Price Group: PC  
AN11

FOR TECHNICAL GUIDELINES PLEASE REFER TO PAGE 246

