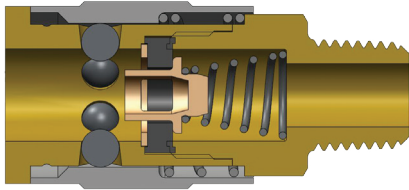
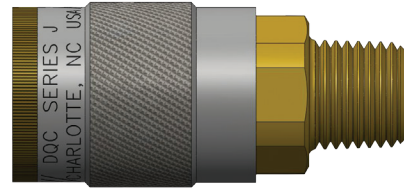


J-Series Truflate Interchange Coupler



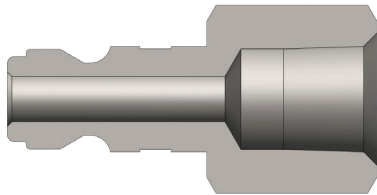
Male Thread



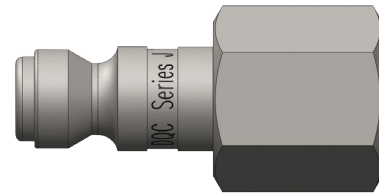
Body Size (inch)	Part No.	Threads	Material	Length		Maximum OD		Hex (inch)	Weight (kg)	Pkg Qty		Price \$ (ea)
				inch	mm	inch	mm			Bag	Box	
¼	2JM1-B	¼ - 27 NPTF	Brass	1.88	47.8	0.88	22.4	¾	0.08	10	100	38.45
¼	2JM2-B	¼ - 18 NPTF	Brass	2.04	52.0	0.88	22.4	¾	0.08	10	100	16.12
¼	2JM3-B	¾ - 18 NPTF	Brass	2.08	52.8	0.88	22.4	¾	0.08	10	100	16.60
¾	3JM2	¼ - 18 NPTF	Steel	2.45	62.2	1.06	26.9	⅞	0.12	10	50	24.41
¾	3JM3	¾ - 18 NPTF	Steel	2.46	62.5	1.06	26.9	⅞	0.12	10	50	37.79
¾	3JM4	½ - 14 NPTF	Steel	2.55	64.8	1.06	26.9	⅞	0.13	10	50	25.53
½	4FM3	¾ - 18 NPTF	Steel	2.97	75.4	1.19	30.2	1	0.19	5	30	32.64
½	4FM4	½ - 14 NPTF	Steel	3.07	78.0	1.19	30.2	1	0.20	5	30	50.90
½	4FM6	¾ - 14 NPTF	Steel	3.12	79.2	1.19	30.2	1 ⅙	0.22	5	30	42.64

Price Group: PC
AN11

J-Series Truflate Interchange Nipple



Female Thread

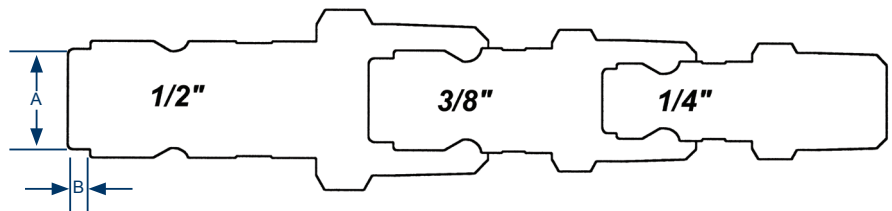


Body Size (inch)	Part No.	Threads	Material	Length		Maximum OD		Hex (inch)	Weight (kg)	Pkg Qty		Price \$ (ea)
				inch	mm	inch	mm			Bag	Box	
¼	J2F1	¼ - 27 NPTF	Steel	1.34	34.0	0.65	16.5	⅞	0.02	10	100	3.74
¼	J2F2	¼ - 18 NPTF	Steel	1.56	39.6	0.79	20.1	1 ⅙	0.02	10	100	4.62
¼	J2F2-B	¼ - 18 NPTF	Brass	1.56	39.6	0.79	20.1	1 ⅙	0.02	10	100	8.09
¼	J2F3	¾ - 18 NPTF	Steel	1.56	39.6	1.01	25.7	⅞	0.03	10	100	19.39
¾	J3F3	¾ - 18 NPTF	Steel	1.75	44.5	1.01	25.7	⅞	0.04	10	50	7.32
¾	J3F4	½ - 14 NPTF	Steel	1.91	48.5	1.16	29.5	1	0.05	10	50	20.12
½	J4F3	¾ - 18 NPTF	Steel	2.11	53.6	1.01	25.7	⅞	0.06	10	50	22.96
½	J4F4	½ - 14 NPTF	Steel	2.26	57.4	1.16	29.5	1	0.08	10	50	12.43
½	J4F6	¾ - 14 NPTF	Steel	2.31	58.7	1.37	34.8	1 ⅙	0.12	10	50	50.55

Price Group: PC
AN11

J-Series Profiles

Body Size (inch)	A (mm)	B (mm)
1/4	9.53	1.59
3/8	11.11	3.18
1/2	14.29	3.18



FOR TECHNICAL GUIDELINES PLEASE REFER TO PAGE 246



1300 134 651
dixonvalve.com.au

All prices exclude GST.
ADPL718