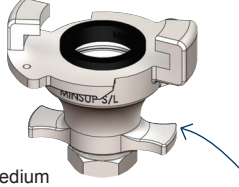


Surelock™ Blank End
minsup



Small



Medium

1" BSP take-off

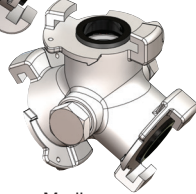
Size (inch)	Pkg Qty	Part No.	Price \$ (ea)
Small			
3/8 - 1/4	50	08/013/26/000	20.71
Medium			
1 1/2 - 2	15	08/013/29/000	69.71

Price Group: MS
AA03
AA04

Surelock™ Three-Way



Small

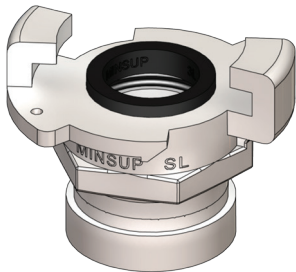


Medium

Size (inch)	Pkg Qty	Part No.	Price \$ (ea)
Small			
3/8 - 1/4	15	08/013/27/000	50.23
Medium			
1 1/2 - 2	4	08/013/28/000	146.66

Price Group: MS
AA03
AA04

2" Shouldered x Surelock™ Couplings



Application:	Developed specifically for Australian underground mining applications - eliminates laborious threaded connections.
Materials:	<ul style="list-style-type: none"> Natural rubber gasket SG Iron body ISO 1083:400-250-15

Part No.	WP		Pkg Qty	Price \$ (ea)
	PSI	MPa		
SLV50	500	3.5	1	60.90

Note: free bag of safety locking pins with every box quantity purchase of couplings

Price Group: MS
AA04

Small to Medium Surelock™ Adaptors



Application:	Enables easy connection between small Surelock™ (3/8" to 1/4") and medium Surelock™ (1 1/2" to 2").
---------------------	---

Part No.	Pkg Qty	Price \$ (ea)
08/013/31/000	15	157.31

Note: free bag of safety locking pins with every box quantity purchase of couplings

Price Group: MS
AA04

Safety Locking Pins



Pkg Qty	Part No.	Material	Price \$ (ea)
1000	05/010/02/000	Z/P mild steel	0.40
1000	05/010/02/000SS	316 Stainless Steel	2.70

Price Group: MS
BA01

! The use of a Minsup™ Safety Locking Pin is necessary to ensure that Minsup™ A Type & Surelock™ Claw Couplings will not become accidentally disconnected. This ensures that the fittings are properly connected as the pin will not go through the holes in both couplings until the couplings are locked into place.

FOR SPECIFICATIONS, APPLICATION AND MATERIAL GUIDELINES PLEASE REFER TO PAGE 114

