



The Right Connection®

Mining Product Catalogue

dixonvalve.com.au
customerservice@dixonvalve.com.au



Hose Fittings

4 - 18

Minsup A Type Claw Couplings - - - - -	4-5	Hose Joiners Lightweight - - - - -	14
Minsup Surelock Claw Couplings - - - - -	6-8	Hose Nozzle - - - - -	14
Minsup Safety Claw Clamps - - - - -	8	Hugger Clamps - - - - -	14
Minsup Seals - A Type & Surelock - - - - -	9	Dixon Camlocks - - - - -	15-17
Minsup Safety Locking Pins - - - - -	9	Dixon Bayloc Dry Break Cam & Groove Couplings - - -	18
Thread Tape - - - - -	9		
Minsup Whip Checks - - - - -	9		
Double Bolt Clamps - - - - -	10		
Mikalor Super Clamps - Zinc Plated - - - - -	10		
Pre-Formed Band Clamps & Tool - - - - -	11		
Bandit Tool, Strap & Buckles - - - - -	11		
Hose Menders - - - - -	12		
Combination Nipples - - - - -	12		
Hose Tails - Boss BSP - - - - -	13		
Hose Tails - Flanged - - - - -	13		
Hose Tails - Shouldered - - - - -	13		
Hose Tails - Stainless Steel BSP - - - - -	13		
Y-Pieces - - - - -	14		

Hoses

19 - 27

Rubber Multi-Purpose Non-Conductive 300PSI WP (A104) - 19	Rubber Petrol & Oil Delivery Hose 145PSI WP (A450) - 22
Rubber Material Handling Muff Coupling Hose (A800) - 19	Rubber FRAS Air & Water Delivery Hose
Muff Couplings - - - - - 19	300PSI (A700) - - - - - 23
Rubber High Temp 135°C Steel Braid Bull Hose (A181) 19	Rubber FRAS Air & Water Suction Hose (A710) - - - - - 23
Rubber Super Heavy Duty Air & Water Delivery Hose	Rubber Material Handling R.C. (Reverse Cycle)
300PSI WP (A191) - - - - - 20	Sampling Hose 500PSI (A550) - - - - - 23
Rubber Super Heavy Duty Air & Water Delivery Hose	Layflat - PVC Heavy Duty Red - - - - - 24
300PSI WP (A191) Fitted Assemblies - - - - - 20	Layflat - PVC Light Duty Blue - - - - - 24
Rubber Super Air & Water Delivery Hose 300PSI WP (A190) -20	PVC Multi-Purpose Clear Petrol Resistant (H020) - - - - 24
Rubber Air & Water Delivery Hose 145PSI WP (A200) - 21	PVC Safety Yellow Air/Water (H010) - - - - - 25
Rubber Heavy Duty Water Suction & Delivery Hose	PVC Heavy Duty Grey Suction - - - - - 25
145PSI WP (A210) - - - - - 21	PVC Heavy Duty Blue Petrol & Oil Suction - - - - - 25
Rubber Steam Hose Wire Reinforced 261PSI WP (A230) -21	PVC Clear Tubing Hose - - - - - 26
Rubber UHMW Polyethylene Suction & Delivery	Anfo Hose - - - - - 26
Chemical Hose 150PSI WP (A410) - - - - - 22	Spiral Hose Guard - Black - - - - - 26
Rubber Petrol & Oil Suction & Delivery Hose	Expansion Joints - - - - - 26
145PSI WP (A430) - - - - - 22	Insertion Rubber - - - - - 27
	Skirting Rubber - - - - - 27

Valves

28 - 34

Brass Gate Valves - - - - - 28	Butterfly Valves - Wafer - - - - - 30
Flanged Gate Valves - - - - - 28	Y Strainers - - - - - 31
Shouldered Gate Valves - - - - - 28	Roma Pressure Reducing Valves - - - - - 31
Brass Swing Check Valves - BSP - - - - - 28	Ratio Pressure Reducing Valves - - - - - 31
Flanged Check Valves - - - - - 28	Brass Bendigo Valves - - - - - 31
Wafer Duo Check Valves - - - - - 29	Minsup Shoulder Butterfly Valve - - - - - 32
1 Piece Stainless Steel Ball Valves - - - - - 29	Valve Assemblies - - - - - 32
2 Piece Stainless Steel Ball Valves - - - - - 29	Suction Sieves - - - - - 32
3 Piece Stainless Steel Ball Valves - - - - - 29	Stainless Steel Strainer - - - - - 32
Brass Ball Valve PN25 with S/S Handle - - - - - 30	Minsup Econovalves - - - - - 33-34
Knife Gate Valves - Cast Iron - - - - - 30	BSP Footvalves - - - - - 34

Steel Pipe Fittings

35 - 41

Screwed 90° BSP Bends - Galv Malleable -----	35	Carbon Steel Size Plate Flanges - Table D -----	41
Screwed BSP Caps -----	35	Carbon Steel Plate Flanges - Table E -----	41
Screwed 90° BSP Elbows Female & Female -----	36	316 Stainless Steel Plate Flanges -----	41
Screwed 90° BSP Elbows Male & Female -----	36	Galvanised Medium Wall Pipe -----	41
Screwed BSP Hex Nipples -----	36		
Screwed BSP Reducing Hex Nipples -----	37		
Screwed BSP Hollow Plugs -----	37		
Screwed BSP Sockets -----	38		
BSP Screwed Reducing Sockets -----	38		
Screwed BSP Tee's -----	39		
Screwed BSP Unions -----	39		
Screwed BSP Flanges -----	39		
Screwed BSP Reducing Bushes -----	40		
Screwed BSP Reducing Tee's -----	40		

Shouldered Pipe Fittings

42 -44

Galv Shouldered Couplings -----	42	Galv Shouldered Setting Piece -----	43
Quick Release Shouldered Couplings -----	42	Galv Shouldered Spring Bends -----	44
Seals for Galv Shouldered Couplings -----	42	Galv Shouldered Tee's -----	44
Shoulder Rings -----	42	Galv Shouldered Offset Tee's -----	44
Shouldered x BSP Screwed Adaptors -----	42	Galv Shouldered Reducing Tee's -----	44
Galv Shouldered Bends -----	43	Galv Shouldered Reducers -----	44
Galv Shouldered Blank Ends -----	43	Galv Shouldered Y Piece -----	44
Galv Shouldered Elbows - 90° -----	43		
Galv Shouldered Elbows - 45° -----	43		

Anfo Pressure Loader And Spares

45 - 51

Anfo Quotation Form -----	45	Anfo Spares -----	47-51
Anfo Loader Models -----	46		

Specialty Mining Products

52

Scraper Blocks -----	52	Oil Lubricators -----	52
Scaling Bars - Hex Steel -----	52	Pelican Picks -----	52
Scaling Bars - Aluminium -----	52		

FloMax Fluid Transfer Systems

53 - 54

FloMax Diesel Nozzle -----	53	FloMax Standard Series Transmission Fluid (Violet) --	53
FloMax Diesel Fuel Receivers -----	53	FloMax R Series Engine Oil (Red) -----	54
FloMax Standard Series Engine Oil (Red) -----	53	FloMax R Series Hydraulic Oil (Gold) -----	54
FloMax Standard Series Hydraulic Oil (Gold) -----	53	FloMax R Series Coolant Fluid (Teal) -----	54
FloMax Standard Series Coolant Fluid (Teal) -----	53	FloMax R Series Transmission Fluid (Violet) -----	54

Fire Protection

55

Fire Extinguisher ABE Powder -----	55	Heavy Duty Vehicle Bracket -----	55
Fire Extinguisher Foam -----	55	Fire Extinguisher Bag -----	55
Fire Extinguisher CO2 -----	55	Fire Hose Reel -----	55

Plasson Compression Fittings

56 - 64

BSP Sockets-----	56	Poly x Male BSP Elbows -----	60
BSP Tee's-----	56	45° Poly Elbow -----	60
BSP Elbows -----	56	End Plugs-----	60
BSP Nipples -----	56	BSP Male-Poly Adaptors -----	61
BSP End Caps -----	56	BSP Female Adaptors -----	62
BSP End Plugs -----	57	Flanged x Poly Adaptors -----	62
BSP Reducing Bushes-----	57	Shouldered x Poly Adaptors -----	62
Couplings-----	57	Plasson O-Rings -----	63
Poly Reducing Couplings -----	58	Plasson Split Rings -----	63
Poly x Poly x Poly Tee's -----	58	Plasson Nuts -----	63
Poly x Male BSP x Poly Tee's -----	58	Plasson Inserts -----	63
Poly x Female BSP x Poly Tee's -----	59	Reducing Sets -----	64
Reducing Tee's -----	59	Plasson Wrench's -----	64
Poly x Poly Elbows -----	59	Tapping Saddles -----	64
Female BSP x Poly Elbows -----	60		

Paint And Lifting Gear

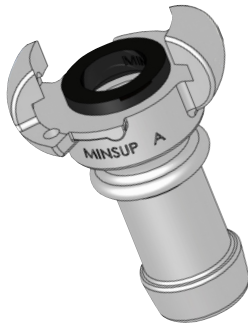
65 - 66

Paint - Horizontal Mine Marking -----	65	Rope -----	66
Paint - Vertical Mine Marking -----	65	Shackles -----	66
Paint Stick -----	65	Chain-----	66

minsup A Type Claw Couplings



DIXON PART NO.	DESCRIPTION	UOM	PACK QTY
08/001/12/000	COUPLING A MALE 10MM 01/12	EACH	50
08/001/09/000	COUPLING A MALE 12MM 01/09	EACH	50
08/001/06/000	COUPLING A MALE 20MM 01/06	EACH	50
08/001/03/000	COUPLING A MALE 25MM 01/03	EACH	50
08/001/01/000	COUPLING A MALE 32MM 01/01	EACH	50



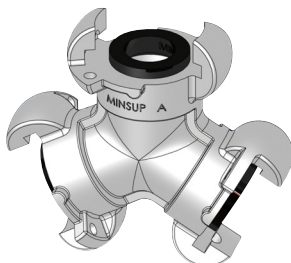
DIXON PART NO..	DESCRIPTION	UOM	PACK QTY
08/001/14/000	COUPLING A HOSE END 10MM 01/14	EACH	50
08/001/11/000	COUPLING A HOSE END 12MM 01/11	EACH	50
08/001/08/000	COUPLING A HOSE END 20MM 01/08	EACH	50
08/001/05/000	COUPLING A HOSE END 25MM 01/05	EACH	50
08/001/02/000	COUPLING A HOSE END 32MM 01/02	EACH	50



DIXON PART NO.	DESCRIPTION	UOM	PACK QTY
08/001/13/000	COUPLING A FEMALE 10MM 01/13	EACH	50
08/001/10/000	COUPLING A FEMALE 12MM 01/10	EACH	50
08/001/07/000	COUPLING A FEMALE 20MM 01/07	EACH	50
08/001/04/000	COUPLING A FEMALE 25MM 01/04	EACH	50



DIXON PART NO.	DESCRIPTION	UOM	PACK QTY
08/001/15/000	END BLANK A 01/15	EACH	50



DIXON PART NO.	DESCRIPTION	UOM	PACK QTY
08/001/16/000	COUPLING 3 WAY A 01/16	EACH	20

minsip A Type Claw Couplings - Stainless Steel Bellow Seal 1000 PSI

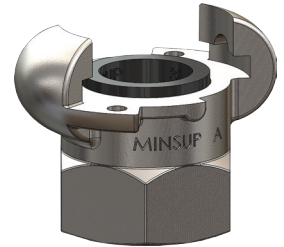
DIXON PART NO.	DESCRIPTION	UOM	PACK QTY
AM13BSPSTS-B	COUPLING A MALE 12MM SS316	EACH	50
AM20BSPSTS-B	COUPLING A MALE 20MM SS316	EACH	50
AM25BSPSTS-B	COUPLING A MALE 25MM SS316	EACH	50



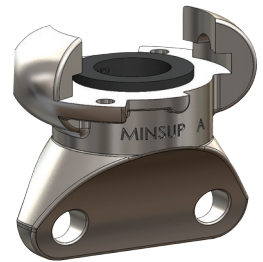
DIXON PART NO.	DESCRIPTION	UOM	PACK QTY
AH13STS-B	COUPLING A HOSE END 12MM SS316	EACH	50
AH20STS-B	COUPLING A HOSE END 20MM SS316	EACH	50
AH25STS-B	COUPLING A HOSE END 25MM SS316	EACH	50



DIXON PART NO.	DESCRIPTION	UOM	PACK QTY
AF13BSPSTS-B	COUPLING A FEMALE 12MM SS316	EACH	50
AF20BSPSTS-B	COUPLING A FEMALE 20MM SS316	EACH	50
AF25BSPSTS-B	COUPLING A FEMALE 25MM SS316	EACH	50



DIXON PART NO.	DESCRIPTION	UOM	PACK QTY
AB1032STS-B	END BLANK SS316	EACH	50



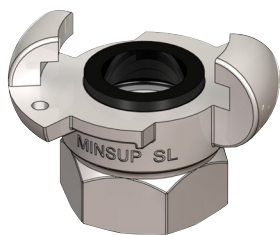
DIXON PART NO.	DESCRIPTION	UOM	PACK QTY
AH25STSKC-B	COUPLING A HOSE END - KING CRIMP SS316	EACH	20

**minsip**

minsup Surelock Claw Couplings



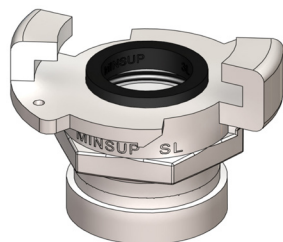
DIXON PART NO.	DESCRIPTION	UOM	PACK QTY
08/013/23/000	COUPLING SURELOCK MALE 10MM 13/23	EACH	50
08/013/20/000	COUPLING SURELOCK MALE 12MM 13/20	EACH	50
08/013/17/000	COUPLING SURELOCK MALE 20MM 13/17	EACH	50
08/013/14/000	COUPLING SURELOCK MALE 25MM 13/14	EACH	50
08/013/11/000	COUPLING SURELOCK MALE 32MM 13/11	EACH	50
08/013/07/000	COUPLING SURELOCK MALE 38MM 13/07	EACH	15
08/013/04/000	COUPLING SURELOCK MALE 50MM 13/04	EACH	15
08/013/01/000	COUPLING SURELOCK MALE 75MM 13/01	EACH	3



DIXON PART NO.	DESCRIPTION	UOM	PACK QTY
08/013/24/000	COUPLING SURELOCK FEMALE 10MM 13/24	EACH	50
08/013/21/000	COUPLING SURELOCK FEMALE 12MM 13/21	EACH	50
08/013/18/000	COUPLING SURELOCK FEMALE 20MM 13/18	EACH	50
08/013/15/000	COUPLING SURELOCK FEMALE 25MM 13/15	EACH	50
08/013/08/000	COUPLING SURELOCK FEMALE 40MM 13/08	EACH	15
08/013/05/000	COUPLING SURELOCK FEMALE 50MM 13/05	EACH	15
08/013/02/000	COUPLING SURELOCK FEMALE 75MM 13/02	EACH	3



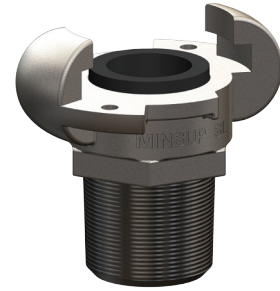
DIXON PART NO.	DESCRIPTION	UOM	PACK QTY
08/013/22/000	COUPLING SURELOCK HOSE END 12MM 13/22	EACH	50
08/013/19/000	COUPLING SURELOCK HOSE END 20MM 13/19	EACH	50
08/013/16/000	COUPLING SURELOCK HOSE END 25MM 13/16	EACH	50
08/013/13/000	COUPLING SURELOCK HOSE END 32MM 13/13	EACH	50
08/013/10/000	COUPLING SURELOCK HOSE END 38MM 13/10	EACH	15
08/013/06/000	COUPLING SURELOCK HOSE END 50MM 13/06	EACH	15
08/013/35/000	COUPLING SURELOCK HOSE END 75MM 13/03	EACH	3



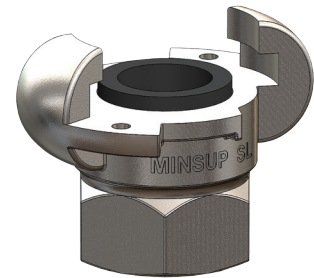
DIXON PART NO.	DESCRIPTION	UOM	PACK QTY
SLV50	50MM SHOULDERED SURELOCK	EACH	1

minsup Surelock Claw Couplings - Stainless Steel

DIXON PART NO.	DESCRIPTION	UOM	PACK QTY
SM13BSPSTS	COUPLING SURELOCK MALE 12MM SS316	EACH	50
SM20BSPSTS	COUPLING SURELOCK MALE 20MM SS316	EACH	50
SM25BSPSTS	COUPLING SURELOCK MALE 25MM SS316	EACH	50
SM50BSPSTS	COUPLING SURELOCK MALE 50MM SS316	EACH	15



DIXON PART NO.	DESCRIPTION	UOM	PACK QTY
SF13BSPSTS	COUPLING SURELOCK FEMALE 12MM SS316	EACH	50
SF20BSPSTS	COUPLING SURELOCK FEMALE 20MM SS316	EACH	50
SF25BSPSTS	COUPLING SURELOCK FEMALE 25MM SS316	EACH	50
SF50BSPSTS	COUPLING SURELOCK FEMALE 50MM SS316	EACH	15



DIXON PART NO.	DESCRIPTION	UOM	PACK QTY
SH13STS	COUPLING SURELOCK HOSE END 12MM SS316	EACH	50
SH20STS	COUPLING SURELOCK HOSE END 20MM SS316	EACH	50
SH25STS	COUPLING SURELOCK HOSE END 25MM SS316	EACH	50
SH50STS	COUPLING SURELOCK HOSE END 50MM SS316	EACH	15



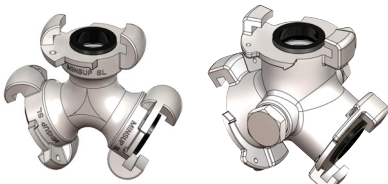
DIXON PART NO.	DESCRIPTION	UOM	PACK QTY
SB1032STS	BLANK END SURELOCK 12-25 MM SS316	EACH	1



minsup Surelock Claw Couplings



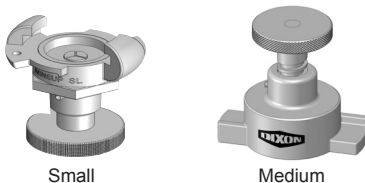
DIXON PART NO.	DESCRIPTION	UOM	PACK QTY
08/013/26/000	BLANK END SURELOCK 32 - 10 MM 13/26	EACH	50
08/013/29/000	BLANK END SURELOCK 50 - 38 MM 13/29	EACH	15



Small

Medium

DIXON PART NO.	DESCRIPTION	UOM	PACK QTY
08/013/27/000	SMALL 3 WAY SURELOCK COUPLING (3/8" TO 1 1/4")	EACH	1
08/013/28/000	MEDIUM 3 WAY SURELOCK COUPLING (1 1/2" TO 2")	EACH	1



Small

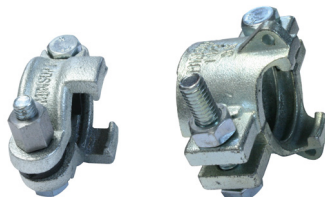
Medium

DIXON PART NO.	DESCRIPTION	UOM	PACK QTY
IT100SL	SMALL SURELOCK SEAL INSERTION TOOL	EACH	1
IT200SL	MEDIUM SURELOCK SEAL INSERTION TOOL	EACH	1
IT300SL	LARGE SURELOCK SEAL INSERTION TOOL	EACH	1



Large

Safety Claw Clamps



1/2", 3/4" & 1"

1 1/2" & 2"



1 1/2" & 2" with chain



3" Boss Clamp

DIXON PART NO.	DESCRIPTION	UOM	PACK QTY
08/023/42/000	1/2" SAFETY CLAW CLAMP, HOSE OD 22-28MM	EACH	100
08/023/43/000	3/4" SAFETY CLAW CLAMP HOSE, HOSE OD 29-34MM	EACH	100
08/023/46/000	1" SAFETY CLAW CLAMP HOSE, HOSE OD 35-40MM	EACH	50
08/023/05/000	38MM / 1 1/2" CLAW CLAMP, HOSE OD 51-58MM	EACH	15
08/023/06/000	38MM / 1 1/2" CLAW CLAMP, HOSE OD 51-58MM - WITH CHAIN RESTRAINER	EACH	15
08/023/03/000	50MM / 2" CLAW CLAMP, HOSE OD 65.5-71MM	EACH	12
08/023/04/000	50MM / 2" CLAW CLAMP, HOSE OD 65.5-71MM - WITH CHAIN RESTRAINER	EACH	12
BU35	3" BU35 4 BOLT BOSS CLAMP, HOSE OD 88.9-100MM	EACH	1
B39	3" B39 4 BOLT BOSS CLAMP, HOSE OD 103-113MM	EACH	1

DIXON PART NO.	DESCRIPTION	UOM	PACK QTY
AWR4	AWR4 - MINSUP A TYPE STANARD SEAL	EACH	50
05/007/07/000	3/8 - 1 1/4" SMALL SURELOCK SEAL - BELLOWS - NATURAL RUBBER	EACH	25
05/007/07/000V	3/8 - 1 1/4" SMALL SURELOCK SEAL - BELLOWS - VITON	EACH	1
05/007/05/000	1 1/2" - 2" MEDIUM SURELOCK SEAL - BELLOWS - NATURAL RUBBER	EACH	1
05/007/05/000V	1 1/2" - 2" MEDIUM SURELOCK SEAL - BELLOWS - VITON	EACH	1
08/007/09/002	3" / LARGE SURELOCK SEAL - BELLOW - NATURAL RUBBER	EACH	1

minsup Seals - A Type & Surelock



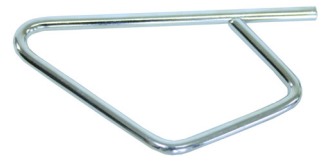
AWR4 - A Type Seal



Surelock Seal

DIXON PART NO.	DESCRIPTION	UOM	PACK QTY
05/010/02/000B	PIN LOCKING 10/02 (BOX OF 1000)	EACH	1000

minsup Safety Locking Pin



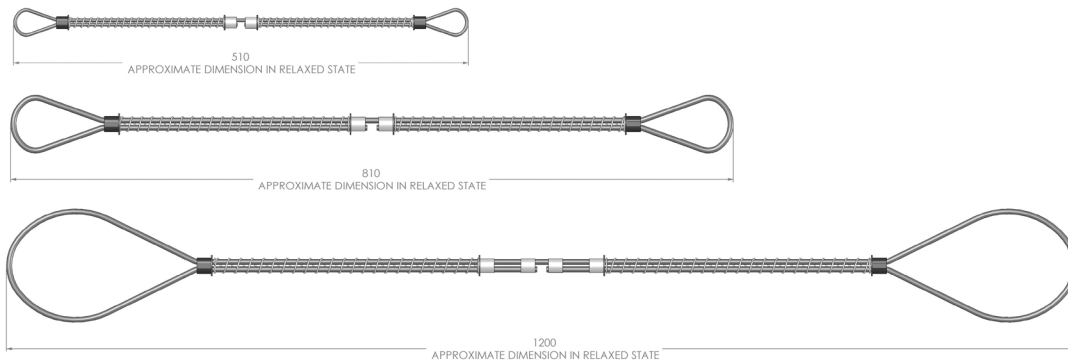
DIXON PART NO.	DESCRIPTION	UOM	PACK QTY
TTB50	TAPE THREAD - 12MM	ROLL	100

Thread Tape



DIXON PART NO.	DESCRIPTION	UOM	PACK QTY
08/023/90/000	WHIP CHECK 23/90 - SMALL (SUIT 10-32MM)	EACH	1
08/023/91/000	WHIP CHECK 23/91 - MEDIUM(SUIT 32-50MM)	EACH	1
08/023/92/000	WHIP CHECK 23/92 - LARGE (SUIT 65-100MM)	EACH	1

minsup Whip Checks



Double Bolt Clamps



DIXON PART NO.	DESCRIPTION	UOM	PACK QTY
SL29	CLAMP ADJUSTABLE 22 - 29MM 23/20 SL29	EACH	1
SL34	CLAMP ADJUSTABLE 28 -34MM 23/21 SL34	EACH	1
SL40	CLAMP ADJUSTABLE 32 - 40 MM 23/22 SL40	EACH	1
SL49	CLAMP ADJUSTABLE 39 - 49 MM 23/23 SL49	EACH	1
SL60	CLAMP ADJUSTABLE 48 - 60 MM 23/24 SL60	EACH	1
SL76	CLAMP ADJUSTABLE 60 - 76 MM 23/25 SL76	EACH	1
SL94	CLAMP ADJUSTABLE 77-94MM 23/26 SL94	EACH	1
525	CLAMP ADJUSTABLE 108-125MM 525	EACH	1
SL115	CLAMP ADJUSTABLE 94 - 115 MM 23/27 SL115	EACH	1

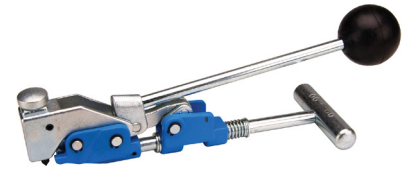
Mikalor Super Clamps - Zinc Plated



DIXON PART NO.	DESCRIPTION	UOM	PACK QTY
SW1-23	CLAMP SUPER 23 - 25MM HEAVY DUTY	EACH	1
SW1-25	CLAMP SUPER 26 - 28MM HEAVY DUTY	EACH	1
SW1-31	CLAMP SUPER 32 - 35MM HEAVY DUTY	EACH	1
SW1-37	CLAMP SUPER 36 - 39MM HEAVY DUTY	EACH	1
SW1-40	CLAMP SUPER 40 - 43MM HEAVY DUTY	EACH	1
SW1-43	CLAMP SUPER 44 - 47MM HEAVY DUTY	EACH	1
SW1-47	CLAMP SUPER 48 - 51MM HEAVY DUTY	EACH	1
SW1-51	CLAMP SUPER 52 - 55MM HEAVY DUTY	EACH	1
SW1-55	CLAMP SUPER 56 - 59MM HEAVY DUTY	EACH	1
SW1-59	CLAMP SUPER 60 - 63MM HEAVY DUTY	EACH	1
SW1-63	CLAMP SUPER 64 - 67MM HEAVY DUTY	EACH	1
SW1-68	CLAMP SUPER 68 - 73MM HEAVY DUTY	EACH	1
SW1-73	CLAMP SUPER 74 - 79MM HEAVY DUTY	EACH	1
SW1-79	CLAMP SUPER 80 - 85MM HEAVY DUTY	EACH	1
SW1-85	CLAMP SUPER 86 - 91MM HEAVY DUTY	EACH	1
SW1-91	CLAMP SUPER 92 - 97MM HEAVY DUTY	EACH	1
SW1-97	CLAMP SUPER 98 - 103MM HEAVY DUTY	EACH	1
SW1-104	CLAMP SUPER 104 - 112MM HEAVY DUTY	EACH	1
SW1-112	CLAMP SUPER 113 - 121MM HEAVY DUTY	EACH	1
SW1-121	CLAMP SUPER 122 -130MM HEAVY DUTY	EACH	1
SW1-130	CLAMP SUPER 131 - 139MM HEAVY DUTY	EACH	1
SW1-140	CLAMP SUPER 140 - 148MM HEAVY DUTY	EACH	1
SW1-150	CLAMP SUPER 149 - 161MM HEAVY DUTY	EACH	1
SW1-162	CLAMP SUPER 162 - 174MM HEAVY DUTY	EACH	1
SW1-174	CLAMP SUPER 175 - 187MM HEAVY DUTY	EACH	1
SW1-187	CLAMP SUPER 188 - 200MM HEAVY DUTY	EACH	1
SW1-200	CLAMP SUPER 201 - 213MM HEAVY DUTY	EACH	1
SW1-213	CLAMP SUPER 214 - 226MM HEAVY DUTY	EACH	1
SW1-226	CLAMP SUPER 227 - 239MM HEAVY DUTY	EACH	1
SW1-239	CLAMP SUPER 240 - 252MM HEAVY DUTY	EACH	1

DIXON PART NO.	DESCRIPTION	UOM	PACK QTY
F1	TOOL PRE-FORMED CLAMPING	EACH	1

Pre-Formed Band Clamps & Tool



DIXON PART NO.	DESCRIPTION	UOM	PACK QTY
FS4	1IN PREFORMED CLAMP S/STL BOX 100 FS4	EACH	100
FS5	1 1/4IN PRE-FORMED CLAMP S/STL BOX 100 FS5	EACH	100
FS6	1 1/2IN PRE-FORMED CLAMP S/STL BOX 100 FS6	EACH	100
FS7	1 3/4IN PRE-FORMED CLAMP S/STL BOX 100 FS7	EACH	100
FS8	2IN PRE-FORMED CLAMP S/STL BOX 100 FS8	EACH	100
FS9	2 1/4IN PRE-FORMED CLAMP S/STL BOX 100 FS9	EACH	100
FS10	2 1/2IN PRE-FORMED CLAMP S/STL BOX 50 FS10	EACH	50
FS11	2 3/4IN PRE-FORMED CLAMP S/STL BOX 50 FS11	EACH	50
FS12	3IN PRE-FORMED CLAMP S/STL BOX 50 FS12	EACH	50
FS14	3 1/2IN PRE-FORMED CLAMP S/STL BOX 50 FS14	EACH	50
FS18	4 1/2IN PRE-FORMED CLAMP S/STL BOX 25 FS18	EACH	25



DIXON PART NO.	DESCRIPTION	UOM	PACK QTY
51960	BANDIT TOOL - 51960	EACH	1

Bandit Tool , Strap & Buckles



DIXON PART NO.	DESCRIPTION	UOM	PACK QTY
SS375	10MM S/STL BANDIT STRAP 100FT	MTR	30
SS500	12MM S/STL BANDIT STRAP 100FT	MTR	30
SS625	16MM S/STL BANDIT STRAP 100FT	MTR	30
SS750	20MM S/STL BANDIT STRAP 100FT	MTR	30



DIXON PART NO.	DESCRIPTION	UOM	PACK QTY
CS375	10MM S/STL BANDIT BUCKLES BOX OF 100	EACH	100
CS500	12MM S/STL BANDIT BUCKLES BOX OF 100	EACH	100
CS625	16MM S/STL BANDIT BUCKLES BOX OF 100	EACH	100
CS750	20MM S/STL BANDIT BUCKLES BOX OF 50	EACH	50



Hose Menders



DIXON PART NO.	DESCRIPTION	UOM	PACK QTY
DM1	DIXON STEEL HOSE MENDER 12MM	EACH	1
DM6	DIXON STEEL HOSE MENDER 20MM	EACH	1
DM11	DIXON STEEL HOSE MENDER 25MM	EACH	1
DM16	DIXON STEEL HOSE MENDER 32MM	EACH	1
DM21	DIXON STEEL HOSE MENDER 40MM	EACH	1
DM26	DIXON STEEL HOSE MENDER 50MM	EACH	1
DM31	DIXON STEEL HOSE MENDER 65MM	EACH	1
DM36	DIXON STEEL HOSE MENDER 75MM	EACH	1
DM46	DIXON STEEL HOSE MENDER 100MM	EACH	1
DM51	DIXON STEEL HOSE MENDER 125MM	EACH	1
DM66	DIXON STEEL HOSE MENDER 150MM	EACH	1
DM86	DIXON STEEL HOSE MENDER 200MM	EACH	1



DIXON PART NO.	DESCRIPTION	UOM	PACK QTY
M1	15MM HOSE MENDER BOSS	EACH	1
M6	20MM HOSE MENDER BOSS	EACH	1
M11	25MM HOSE MENDER BOSS	EACH	1
M16	32MM HOSE MENDER BOSS	EACH	1
M21	40MM HOSE MENDER BOSS	EACH	1
M26	50MM HOSE MENDER BOSS M26	EACH	1
M31	65MM HOSE MENDER BOSS	EACH	1
M36	75MM HOSE MENDER BOSS	EACH	1
M46	SPLICER HOSE 100MM M46 C.I	EACH	1

Combination Nipples



DIXON PART NO.	DESCRIPTION	UOM	PACK QTY
STC5A	COMBINATION NIPPLE 20MM BSP	EACH	1
STC10A	COMBINATION NIPPLE 25MM BSP	EACH	1
STC15A	COMBINATION NIPPLE 32MM BSP	EACH	1
STC20A	COMBINATION NIPPLE 40MM BSP	EACH	1
STC25A	COMBINATION NIPPLE 50MM BSP	EACH	1
STC30A	COMBINATION NIPPLE 65MM BSP	EACH	1
STC35A	COMBINATION NIPPLE 75MM BSP	EACH	1
STC40A	COMBINATION NIPPLE 100MM BSP	EACH	1
STC50A	COMBINATION NIPPLE 125MM BSP	EACH	1
STC60A	COMBINATION NIPPLE 150MM BSP	EACH	1

DIXON PART NO.	DESCRIPTION	UOM	PACK QTY
MS1A	TAIL HOSE TO BSP 12MM 34/03	EACH	1
MS6A	TAIL HOSE TO BSP 20MM 34/02	EACH	1
MS11A	TAIL HOSE TO BSP 25MM 34/01	EACH	1
MS26A	TAIL HOSE TO BSP CAST 50MM 34/07	EACH	1

Hose Tails - Boss BSP



DIXON PART NO.	DESCRIPTION	UOM	PACK QTY
FSTE150	FLANGED HOSETAIL 40MM TABLE E	EACH	1
FSTE200	FLANGED HOSETAIL 50MM TABLE E	EACH	1
FSTE250	FLANGED HOSETAIL 65MM TABLE E	EACH	1
FSTE300	FLANGED HOSETAIL 75MM TABLE E	EACH	1
FSTE400	FLANGED HOSETAIL 100MM TABLE E	EACH	1
FSTE500	FLANGED HOSETAIL 125MM TABLE E	EACH	1
FSTE600	FLANGED HOSETAIL 150MM TABLE E	EACH	1
FSTE800	FLANGED HOSETAIL 200MM TABLE E	EACH	1

Hose Tails - Flanged



DIXON PART NO.	DESCRIPTION	UOM	PACK QTY
STVS25	TAIL HOSE SWAGED VICT PLATED 50MM 34/54	EACH	1
STVS35	TAIL HOSE SWAGED VICT PLATED 76MM 34/55	EACH	1
STVS40CS	TAIL HOSE SWAGED VICT PLATED 100MM 34/56	EACH	1
STVS60CS	TAIL HOSE SWAGED VICT PLATED 150MM 34/57	EACH	1

Hose Tails - Shouldered



DIXON PART NO.	DESCRIPTION	UOM	PACK QTY
SS16HT015	12MM S/STEEL HOSETAIL BSP	EACH	1
SS16HT020	20MM S/STEEL HOSETAIL BSP	EACH	1
SS16HT025	25MM S/STEEL HOSETAIL BSP	EACH	1
SS16HT032	32MM S/STEEL HOSETAIL BSP	EACH	1
SS16HT040	40MM S/STEEL HOSETAIL BSP	EACH	1
SS16HT050	50MM S/STEEL HOSETAIL BSP	EACH	1
SS16HT065	65MM S/STEEL HOSETAIL BSP	EACH	1
SS16HT080	80MM S/STEEL HOSETAIL BSP	EACH	1

Hose Tails - Stainless Steel BSP



Y-Pieces



DIXON PART NO.	DESCRIPTION	UOM	PACK QTY
08/025/02/000	Y PIECE MALE 25BSPX20X12 25/01	EACH	1
08/025/03/000	Y PIECE MALE 20BSPX20X12 25/03	EACH	1
08/025/05/000	Y PIECE MALE 25BSPX25X12 25/05	EACH	1

Hose Joiners Lightweight



DIXON PART NO.	DESCRIPTION	UOM	PACK QTY
08/030/01/000	JOINER STEEL TUBE 12MM 30/01	EACH	1
08/030/02/000	JOINER STEEL TUBE 20MM 30/02	EACH	1
08/030/03/000	JOINER STEEL TUBE 25MM 30/03	EACH	1
08/030/04/000	JOINER STEEL TUBE 40MM 30/04	EACH	1
08/030/05/000	JOINER STEEL TUBE 50MM 30/05	EACH	1

Hose Nozzle



DIXON PART NO.	DESCRIPTION	UOM	PACK QTY
FNB75S	NOZZLE 3/4 RED POLY CARBONATE	EACH	1

Hugger Clamps



DIXON PART NO.	DESCRIPTION	UOM	PACK QTY
MG110	MINGRIP CLAMPON 110MM	EACH	1
MG160	MINGRIP CLAMPON 160MM	EACH	1
MG200	MINGRIP CLAMPON 200MM	EACH	1

Size (mm)	ALUMINIUM	POLYPROPYLENE	316 STAINLESS STEEL	UOM	PACK QTY
	DIXON PART NO.	DIXON PART NO.	DIXON PART NO.		
20	ALDC075A	PPA075A	SS075A	EACH	1
25	ALDC100A	PPA100A	SS100A	EACH	1
32	ALDC125A	PPA125A	SS125A	EACH	1
40	ALDC150A	PPA150A	SS150A	EACH	1
50	ALDC200A	PPA200A	SS200A	EACH	1
65	ALDC250A		SS250A	EACH	1
80	ALDC300A	PPA300A	SS300A	EACH	1
100	ALDC400A	PPA400A	SS400A	EACH	1
150	ALDC600A		SS600A	EACH	1

**Dixon Type A
Camlock Male
Adaptor x Female
BSP**



Size (mm)	ALUMINIUM	POLYPROPYLENE	316 STAINLESS STEEL	UOM	PACK QTY
	DIXON PART NO.	DIXON PART NO.	DIXON PART NO.		
20	ALDC075B	PPB075A	SS075B	EACH	1
25	ALDC100B	PPB100A	SS100B	EACH	1
32	ALDC125B	PPB125A	SS125B	EACH	1
40	ALDC150B	PPB150A	SS150B	EACH	1
50	ALDC200B	PPB200A	SS200B	EACH	1
65	ALDC250B		SS250B	EACH	1
80	ALDC300B	PPB300A	SS300B	EACH	1
100	ALDC400B	PPB400A	SS400B	EACH	1
150	ALDC600B		SS600B	EACH	1

**Dixon Type B
Camlock Female
Coupler x Male BSP**



Size (mm)	ALUMINIUM	POLYPROPYLENE	316 STAINLESS STEEL	UOM	PACK QTY
	DIXON PART NO.	DIXON PART NO.	DIXON PART NO.		
20	ALDC075C	PPC075A	SS075C	EACH	1
25	ALDC100C	PPC100A	SS100C	EACH	1
32	ALDC125C	PPC125A	SS125C	EACH	1
40	ALDC150C	PPC150A	SS150C	EACH	1
50	ALDC200C	PPC200A	SS200C	EACH	1
65	ALDC250C		SS250C	EACH	1
80	ALDC300C	PPC300A	SS300C	EACH	1
100	ALDC400C	PPC400A	SS400C	EACH	1
150	ALDC600C		SS600C	EACH	1

**Dixon Type C
Camlock Female
Coupler x Hose Tail**



**Dixon Type D
Camlock
Female Coupler
x Female BSP**



Size (mm)	ALUMINIUM	POLYPROPYLENE	316 STAINLESS STEEL	UOM	PACK QTY
	DIXON PART NO.	DIXON PART NO.	DIXON PART NO.		
20	ALDC075D	PPD075A	SS075D	EACH	1
25	ALDC100D	PPD100A	SS100D	EACH	1
32	ALDC125D	PPD125A	SS125D	EACH	1
40	ALDC150D	PPD150A	SS150D	EACH	1
50	ALDC200D	PPD200A	SS200D	EACH	1
65	ALDC250D		SS250D	EACH	1
80	ALDC300D	PPD300A	SS300D	EACH	1
100	ALDC400D	PPD400A	SS400D	EACH	1
150	ALDC600D		SS600D	EACH	1

**Dixon Type E
Camlock
Male Adaptor x Hose**



Size (mm)	ALUMINIUM	POLYPROPYLENE	316 STAINLESS STEEL	UOM	PACK QTY
	DIXON PART NO.	DIXON PART NO.	DIXON PART NO.		
20	ALDC075E	PPE075A	SS075E	EACH	1
25	ALDC100E	PPE100A	SS100E	EACH	1
32	ALDC125E	PPE125A	SS125E	EACH	1
40	ALDC150E	PPE150A	SS150E	EACH	1
50	ALDC200E	PPE200A	SS200E	EACH	1
65	ALDC250E		SS250E	EACH	1
80	ALDC300E	PPE300A	SS300E	EACH	1
100	ALDC400E	PPE400A	SS400E	EACH	1
150	ALDC600E		SS600E	EACH	1

**Dixon Type F
Camlock Male
Adaptor x Male BSP**



Size (mm)	ALUMINIUM	POLYPROPYLENE	316 STAINLESS STEEL	UOM	PACK QTY
	DIXON PART NO.	DIXON PART NO.	DIXON PART NO.		
20	ALDC075F	PPF075A	SS075F	EACH	1
25	ALDC100F	PPF100A	SS100F	EACH	1
32	ALDC125F	PPF125A	SS125F	EACH	1
40	ALDC150F	PPF150A	SS150F	EACH	1
50	ALDC200F	PPF200A	SS200F	EACH	1
65	ALDC250F		SS250F	EACH	1
80	ALDC300F	PPF300A	SS300F	EACH	1
100	ALDC400F	PPF400A	SS400F	EACH	1
150	ALDC600F		SS600F	EACH	1

Size (mm)	ALUMINIUM	POLYPROPYLENE	316 STAINLESS STEEL	UOM	PACK QTY
	DIXON PART NO.	DIXON PART NO.	DIXON PART NO.		
20	ALDC075DC	PPH075A	SS075DC	EACH	1
25	ALDC100DC	PPH100A	SS100DC	EACH	1
32	ALDC125DC	PPH125A	SS125DC	EACH	1
40	ALDC150DC	PPH150A	SS150DC	EACH	1
50	ALDC200DC	PPH200A	SS200DC	EACH	1
65	ALDC250DC		SS250DC	EACH	1
80	ALDC300DC	PPH300A	SS300DC	EACH	1
100	ALDC400DC	PPH400A	SS400DC	EACH	1
150	ALDC500DC		SS500DC	EACH	1
600	ALDC600DC		SS600DC	EACH	1

Dixon Type DC Camlock Dust Cap



Size (mm)	ALUMINIUM	POLYPROPYLENE	316 STAINLESS STEEL	UOM	PACK QTY
	DIXON PART NO.	DIXON PART NO.	DIXON PART NO.		
20	ALDC075DP	PPP075A	SS075DP	EACH	1
25	ALDC100DP	PPP100A	SS100DP	EACH	1
32	ALDC125DP	PPP125A	SS125DP	EACH	1
40	ALDC150DP	PPP150A	SS150DP	EACH	1
50	ALDC200DP	PPP200A	SS200DP	EACH	1
65	ALDC250DP		SS250DP	EACH	1
80	ALDC300DP	PPP300A	SS300DP	EACH	1
100	ALDC400DP	PPP400A	SS400DP	EACH	1
150	ALDC500DP		SS500DP	EACH	1
600	ALDC600DP		SS600DP	EACH	1

Dixon Type DP Camlock Dust Plug



DIXON PART NO.	DESCRIPTION	UOM	PACK QTY
20-C68-AL	CAMLOCK 20-C68-AL 50 ALUM FEMALE-HOSETAIL	EACH	1
25-C68-AL	CAMLOCK 25-C68-AL 65 ALUM FEMALE-HOSETAIL	EACH	1
30-C68-AL	CAMLOCK 30-C68-AL 80 ALUM FEMALE-HOSETAIL	EACH	1
40-C68-AL	CAMLOCK 40-C68-AL 100 ALUM FEMALE-HOSETAIL	EACH	1

Dixon Bent 68° Camlocks



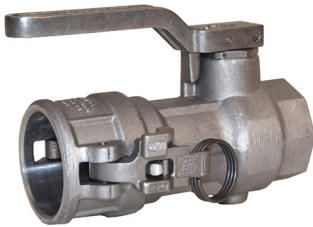
DIXON PART NO.	DESCRIPTION	UOM	PACK QTY
100-HP-SP	CAMLOCK LEVER & PIN SS (SUIT 25MM)	EACH	1
200-HRP-SP	CAMLOCK LEVER & PIN SS (SUIT 32-65MM)	EACH	1
300-HRP-SP	CAMLOCK LEVER & PIN SS (SUIT 80 & 100MM)	EACH	1
600-HRP-SP	AMLOCK LEVER & PIN SS (SUIT 150MM)	EACH	1

Dixon Camlock Handles and Pins



Dixon Camlock Gaskets

Size (mm)	BUNA	VITON	UOM	PACK QTY
	DIXON PART NO.	DIXON PART NO.		
40	150-G-BU	150-G-VI	EACH	1
50	200-G-BU	200-G-VI	EACH	1
65	250-G-BU	250-G-VI	EACH	1
80	300-G-BU	300-G-VI	EACH	1
100	400-G-BU	400-G-VI	EACH	1
150	600-G-BU	600-G-VI	EACH	1

Dixon Bayloc Dry Break Couplers

DIXON PART NO.	DESCRIPTION	UOM	PACK QTY
DBC62-150	1 1/2" NPT x 2" COUPLER, ALUMINIUM BODY, FKM SEAL	EACH	1
DBC62-200	2" NPT x 2 1/2" COUPLER, ALUMINIUM BODY, FKM SEAL	EACH	1
DBC62-300	3" NPT x 4" COUPLER, ALUMINIUM BODY, FKM SEAL	EACH	1

Dixon Bayloc Dry Break Cam & Groove - Adaptors

DIXON PART NO.	DESCRIPTION	UOM	PACK QTY
DBA12-150	1 1/2" NPT x 2" ADAPTOR, ALUMINIUM BODY, FKM SEAL	EACH	1
DBA12-200	2" NPT x 2 1/2" ADAPTOR, ALUMINIUM BODY, FKM SEAL	EACH	1
DBA12-300	3" NPT x 4" ADAPTOR, ALUMINIUM BODY, FKM SEAL	EACH	1

Complete hose data specification sheets are available upon request.

DIXON PART NO.	DESCRIPTION	UOM	PACK QTY
A104010	HOSE 10MM ALL PURPOSE RED COVER	MTR	200m
A104012	HOSE 12MM ALL PURPOSE RED COVER	MTR	200m
A104020	HOSE 19MM ALL PURPOSE RED COVER	MTR	200m
A104025	HOSE 25MM ALL PURPOSE RED COVER	MTR	200m
A104032	HOSE 32MM ALL PURPOSE RED COVER	MTR	60m
A104040	HOSE 38MM ALL PURPOSE RED COVER	MTR	60m
A104050	HOSE 50MM ALL PURPOSE RED COVER	MTR	60m

Rubber Multi-Purpose Non-Conductive 300PSI WP (A104)



DIXON PART NO.	DESCRIPTION	UOM	PACK QTY
A800080020	HOSE 75MM MUFF COUPLING SMOOTH	ROLL	20m
A800100020	HOSE 100MM MUFF COUPLING SMOOTH	ROLL	20m
A800150020	HOSE 150MM MUFF COUPLING SMOOTH	ROLL	20m
A800200010	HOSE 200MM MUFF COUPLING SMOOTH	ROLL	10m
A800250010	HOSE 250MM MUFF COUPLING SMOOTH	ROLL	10m
A800300010	HOSE 300MM MUFF COUPLING SMOOTH	ROLL	10m

Rubber Material Handling Muff Coupling Hose (A800)



Size (mm)	ALUMINIUM	CAST IRON	UOM	PACK QTY
	DIXON PART NO.	DIXON PART NO.		
50	MCA050	MCC051	EACH	1
75	MCA075	MCC076	EACH	1
100	MCA100	MCC101	EACH	1
125	MCA125	MCC126	EACH	1
150	MCA150	MCC150	EACH	1
200	MCA200	MCC201	EACH	1
250	MCA250	MCC251	EACH	1
300	MCA300	MCC301	EACH	1

Muff Couplings



DIXON PART NO.	DESCRIPTION	UOM	PACK QTY
A181050	HOSE 50MM STEEL AIR BLUE COVER	MTR	20m
A181065	HOSE 65MM STEEL AIR BLUE COVER	MTR	20m
A181080	HOSE 76MM STEEL AIR BLUE COVER	MTR	20m

Rubber High Temp 135°C Steel Braid Bull Hose (A181) 1000 PSI



Complete hose data specification sheets are available upon request.

**Rubber Super Heavy
Duty Air & Water
Delivery Hose
300PSI WP (A191/S191)**



DIXON PART NO.	DESCRIPTION	UOM	PACK QTY
A191012020	HOSE 12MM SUPER AIR BLUE STRIPE 20MTR	ROLL	20m
A191020020	HOSE 19MM SUPER AIR BLUE STRIPE 20MTR	ROLL	20m
S191025020	HOSE 25MM SUPER AIR BLUE STRIPE 20MTR	ROLL	20m
A191032020	HOSE 32MM SUPER AIR BLUE STRIPE 20MTR	ROLL	20m
A191040020	HOSE 38MM SUPER AIR BLUE STRIPE 20MTR	ROLL	20m
S191050020	HOSE 50MM SUPER AIR BLUE STRIPE 20MTR	ROLL	20m

**Rubber Super Heavy
Duty Air & Water
Delivery Hose
300PSI WP
Fitted Assemblies**



2" (DN50) with Boss™ clamps



1" (DN25) with claw clamps

DIXON PART NO.	DESCRIPTION	UOM	PACK QTY
A191012FHA	HOSE 12MM SUPER AIR WITH FITTINGS	ROLL	20m
S191025020FSB	HOSE 25MM SUPER AIR WITH FITTINGS	ROLL	20m
S191050020F	HOSE 50MM SUPER AIR WITH FITTINGS	ROLL	20m
A191080FHA	HOSE 75MM SUPER AIR WITH FITTINGS	ROLL	20m

**Rubber Super
Air & Water Delivery
Hose 300PSI WP
(A190)**



Size (mm)	YELLOW	BLACK	UOM	PACK QTY
	DIXON PART NO.	DIXON PART NO.		
12	A190012Y20	A19001220	ROLL	20m
19	A190020Y20	A19002020	ROLL	20m
25	A190025Y20	A19002520	ROLL	20m
32	A190032Y20	A19003220	ROLL	20m
50	A190050Y20	A19005020	ROLL	20m
63		A19006520	ROLL	20m
75	A190080Y20	A19008020	ROLL	20m
100	A190100Y20	A19010020	ROLL	20m

Complete hose data specification sheets are available upon request.

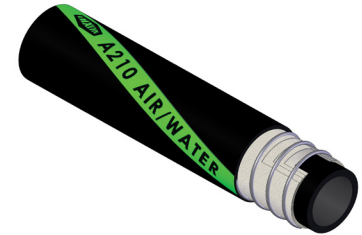
DIXON PART NO.	DESCRIPTION	UOM	PACK QTY
A200012	HOSE 13MM AIR-WATER DELIVERY M/P	MTR	20m
A200020	HOSE 19MM AIR-WATER DELIVERY M/P	MTR	20m
A200025	HOSE 25MM AIR-WATER DELIVERY M/P	MTR	20m
A200032	HOSE 32MM AIR-WATER DELIVERY M/P	MTR	20m
A200040	HOSE 38MM AIR-WATER DELIVERY M/P	MTR	20m
A200050	HOSE 50MM AIR-WATER DELIVERY M/P	MTR	20m
A200065	HOSE 63MM AIR-WATER DELIVERY M/P	MTR	20m
A200080	HOSE 75MM AIR-WATER DELIVERY M/P	MTR	20m
A200090	HOSE 88MM AIR-WATER DELIVERY M/P	MTR	20m
A200100	HOSE 100MM AIR-WATER DELIVERY M/P	MTR	20m
A200150	HOSE 150MM AIR-WATER DELIVERY M/P	MTR	20m
A200200	HOSE 200MM AIR-WATER DELIVERY M/P	MTR	20m

Rubber Air & Water Delivery Hose 145PSI WP (A200)



DIXON PART NO.	DESCRIPTION	UOM	PACK QTY
A210020	HOSE 19MM WATER SUCTION BLACK	MTR	20m
A210025	HOSE 25MM WATER SUCTION BLACK	MTR	20m
A210032	HOSE 32MM WATER SUCTION BLACK	MTR	20m
A210038	HOSE 38MM WATER SUCTION BLACK	MTR	20m
A210050	HOSE 51MM WATER SUCTION BLACK	MTR	20m
A210063	HOSE 63MM WATER SUCTION BLACK	MTR	20m
A210080	HOSE 76MM WATER SUCTION BLACK	MTR	20m
A210100	HOSE 102MM WATER SUCTION BLACK	MTR	20m
A210125	HOSE 127MM WATER SUCTION BLACK	MTR	20m
A210150	HOSE 152MM WATER SUCTION BLACK	MTR	20m
A210200	HOSE 203MM WATER SUCTION BLACK	MTR	20m
A210250	HOSE 254MM WATER SUCTION BLACK	MTR	10m

Rubber Heavy Duty Water Suction & Delivery Hose 145PSI WP (A210)



DIXON PART NO.	DESCRIPTION	UOM	PACK QTY
A230012	HOSE 13MM STEAM RED COVER	MTR	20m
A230020	HOSE 19MM STEAM RED COVER	MTR	20m
A230025	HOSE 25MM STEAM RED COVER	MTR	20m
A230032	HOSE 32MM STEAM RED COVER	MTR	20m
A230040	HOSE 38MM STEAM RED COVER	MTR	20m
A230050	HOSE 51MM STEAM RED COVER	MTR	20m
A230065	HOSE 63.5MM STEAM RED COVER	MTR	20m
A230100	HOSE 102MM STEAM RED COVER	MTR	20m

Rubber Steam Hose Wire Reinforced 261PSI WP (A230)



Complete hose data specification sheets are available upon request.

**Rubber UHMW
Polyethylene Suction &
Delivery Chemical Hose
150PSI WP (A410)**



DIXON PART NO.	DESCRIPTION	UOM	PACK QTY
A410020	HOSE 20MM CHEM SUCT-DELIVERY BLUE	MTR	20m
A410025	HOSE 25MM CHEM SUCT-DELIVERY BLUE	MTR	20m
A410032	HOSE 32MM CHEM SUCT-DELIVERY BLUE	MTR	20m
A410040	HOSE 40MM CHEM SUCT-DELIVERY BLUE	MTR	20m
A410050	HOSE 50MM CHEM SUCT-DELIVERY BLUE	MTR	20m
A410065	HOSE 63MM CHEM SUCT-DELIVERY BLUE	MTR	20m
A410080	HOSE 75MM CHEM SUCT-DELIVERY BLUE	MTR	20m
A410100	HOSE 100MM CHEM SUCT-DELIVERY BLUE	MTR	20m

**Rubber Petrol & Oil
Suction & Delivery Hose
145PSI WP (A430)**



DIXON PART NO.	DESCRIPTION	UOM	PACK QTY
A430020	HOSE 19MM FUEL-OIL SUCTION	MTR	20m
A430022	HOSE 22MM FUEL-OIL SUCTION	MTR	20m
A430025	HOSE 25MM FUEL-OIL SUCTION	MTR	20m
A430032	HOSE 32MM FUEL-OIL SUCTION	MTR	20m
A430035	HOSE 35MM FUEL-OIL SUCTION	MTR	20m
A430040	HOSE 35MM FUEL-OIL SUCTION	MTR	20m
A430042	HOSE 38MM FUEL-OIL SUCTION	MTR	20m
A430045	HOSE 42MM FUEL-OIL SUCTION	MTR	20m
A430048	HOSE 45MM FUEL-OIL SUCTION	MTR	20m
A430050	HOSE 48MM FUEL-OIL SUCTION	MTR	20m
A430055	HOSE 51MM FUEL-OIL SUCTION	MTR	20m
A430060	HOSE 55MM FUEL-OIL SUCTION	MTR	20m
A430065	HOSE 60MM FUEL-OIL SUCTION	MTR	20m
A430070	HOSE 63MM FUEL-OIL SUCTION	MTR	20m
A430080	HOSE 70MM FUEL-OIL SUCTION	MTR	20m
A430090	HOSE 88MM FUEL-OIL SUCTION	MTR	20m
A430100	HOSE 100MM FUEL-OIL SUCTION	MTR	20m

**Rubber Petrol & Oil
Delivery Hose
145PSI WP (A450)**



DIXON PART NO.	DESCRIPTION	UOM	PACK QTY
A450020	HOSE 20MM FUEL-OIL DELIVERY	MTR	20m
A450025	HOSE 25MM FUEL-OIL DELIVERY	MTR	20m
A450032	HOSE 32MM FUEL-OIL DELIVERY	MTR	20m
A450040	HOSE 38MM FUEL-OIL DELIVERY	MTR	20m
A450050	HOSE 50MM FUEL-OIL DELIVERY	MTR	20m
A450065	HOSE 65MM FUEL-OIL DELIVERY	MTR	20m
A450080	HOSE 80MM FUEL-OIL DELIVERY	MTR	20m

Complete hose data specification sheets are available upon request.

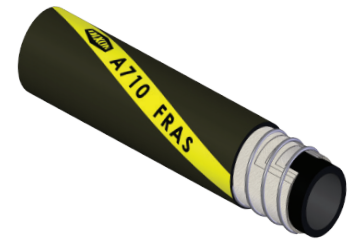
DIXON PART NO.	DESCRIPTION	UOM	PACK QTY
A70001020	HOSE 10MM FRAS AIR WATER 20MTR	ROLL	20m
A70001220	HOSE 13MM FRAS AIR WATER 20MTR	ROLL	20m
A70002020	HOSE 19MM FRAS AIR WATER 20MTR	ROLL	20m
A70002520	HOSE 25MM FRAS AIR WATER 20MTR	ROLL	20m
A70003220	HOSE 32MM FRAS AIR WATER 20MTR	ROLL	20m
A70004020	HOSE 38MM FRAS AIR WATER 20MTR	ROLL	20m
A70005020	HOSE 51MM FRAS AIR WATER 20MTR	ROLL	20m
A70006520	HOSE 63MM FRAS AIR WATER 20MTR	ROLL	20m
A70008020	HOSE 76MM FRAS AIR WATER 20MTR	ROLL	20m
A70010020	HOSE 102MM FRAS AIR WATER 20MTR	ROLL	20m
A700150020	HOSE 150MM FRAS AIR WATER 20MTR	ROLL	20m

**Rubber FRAS
Air & Water Delivery
Hose 300PSI (A700)**



DIXON PART NO.	DESCRIPTION	UOM	PACK QTY
A71004020	HOSE 38MM FRAS AIR WATER 20MTR	ROLL	20m
A71005020	HOSE 51MM FRAS AIR WATER 20MTR	ROLL	20m
A71006520	HOSE 63MM FRAS AIR WATER 20MTR	ROLL	20m
A71008020	HOSE 76MM FRAS AIR WATER 20MTR	ROLL	20m
A71010020	HOSE 102MM FRAS AIR WATER 20MTR	ROLL	20m
A71015020	HOSE 150MM FRAS AIR WATER 20MTR	ROLL	20m

**Rubber FRAS
Air & Water
Suction & Delivery
Hose (A710)**



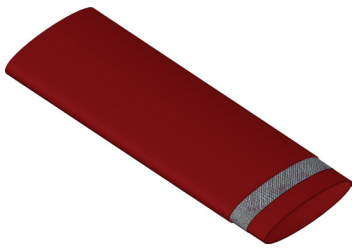
DIXON PART NO.	DESCRIPTION	UOM	PACK QTY
A550050	HOSE 50MM R.C. DRILL	MTR	20m
A550065	HOSE 65MM R.C. DRILL	MTR	20m
A550080	HOSE 75MM R.C. DRILL	MTR	20m
A550100	HOSE 100MM R. C. DRILL	MTR	20m

**Rubber Material Handling
R.C. (Reverse Cycle)
Sampling Hose 500PSI
(A550)**



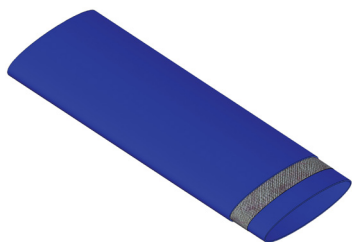
Complete hose data specification sheets are available upon request.

Layflat - PVC Heavy Duty Red



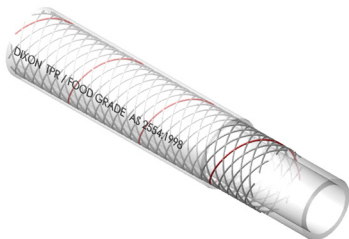
DIXON PART NO.	DESCRIPTION	UOM	PACK QTY
LFAR040	HOSE LAYFLAT 40 MM RED HEAVY DUTY	MTR	100m
LFAR050	HOSE LAYFLAT 50 MM RED HEAVY DUTY	MTR	100m
LFAR065	HOSE LAYFLAT 65 MM RED HEAVY DUTY	MTR	100m
LFAR080	HOSE LAYFLAT 75 MM RED HEAVY DUTY	MTR	100m
LFAR100	HOSE LAYFLAT 100 MM RED HEAVY DUTY	MTR	100m
LFAR150	HOSE LAYFLAT 150 MM RED HEAVY DUTY	MTR	100m

Layflat - PVC Light Duty Blue



DIXON PART NO.	DESCRIPTION	UOM	PACK QTY
LFAB025	HOSE LAYFLAT 25 MM BLUE LIGHT DUTY	MTR	100m
LFAB032	HOSE LAYFLAT 32 MM BLUE LIGHT DUTY	MTR	100m
LFAB040	HOSE LAYFLAT 40 MM BLUE LIGHT DUTY	MTR	100m
LFAB050	HOSE LAYFLAT 50 MM BLUE LIGHT DUTY	MTR	100m
LFAB065	HOSE LAYFLAT 65 MM BLUE LIGHT DUTY	MTR	100m
LFAB080	HOSE LAYFLAT 75 MM BLUE LIGHT DUTY	MTR	100m
LFAB100	HOSE LAYFLAT 100 MM BLUE LIGHT DUTY	MTR	100m

PVC Multi-Purpose Clear Petrol Resistant (H020)



Size (mm)	20MTR ROLL		100MTR ROLL		UOM	PACK QTY
	DIXON PART NO.	DIXON PART NO.	DIXON PART NO.	DIXON PART NO.		
6	H0200620	H02006100			ROLL	1
8	H0200820	H02008100			ROLL	1
10	H0201020	H02010100			ROLL	1
12	H0201220	H02012100			ROLL	1
16	H0201620	H02016100			ROLL	1
20	H0202020	H02020100			ROLL	1
25	H0202520	H02025100			ROLL	1
32	H0203220	H02032100			ROLL	1
40	H0204020				ROLL	1
50	H0205020				ROLL	1

Complete hose data specification sheets are available upon request.

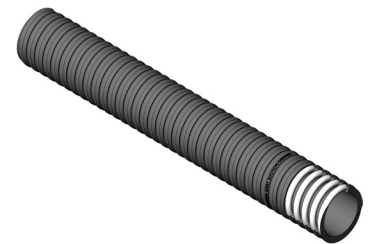
Size (mm)	20MTR ROLL	100MTR ROLL	UOM	PACK QTY
	DIXON PART NO.	DIXON PART NO.		
6	H0100620	H01006100	ROLL	1
8	H0100820	H01008100	ROLL	1
10	H0101020	H01010100	ROLL	1
12	H0101220	H01012100	ROLL	1
20	H0102020	H01020100	ROLL	1
25	H0102520	H01025100	ROLL	1
32	H0103220		ROLL	1
40	H0104020		ROLL	1
50	H0105020		ROLL	1

PVC Safety Yellow Air/Water (H010)



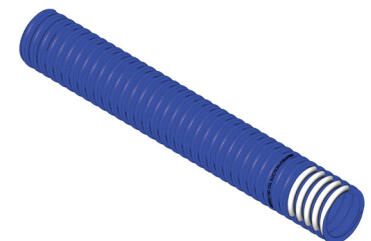
DIXON PART NO.	DESCRIPTION	UOM	PACK QTY
AUS025G020	HOSE 25 MM PVC GREY SUCTION 20MTR	ROLL	20m
AUS032G020	HOSE 32 MM PVC GREY SUCTION 20MTR	ROLL	20m
AUS038G020	HOSE 38 MM PVC GREY SUCTION 20MTR	ROLL	20m
AUS050G020	HOSE 50 MM PVC GREY SUCTION 20MTR	ROLL	20m
AUS065G020	HOSE 65 MM PVC GREY SUCTION 20MTR	ROLL	20m
AUS076G020	HOSE 75 MM PVC GREY SUCTION 20MTR	ROLL	20m
AUS100G020	HOSE 100 MM PVC GREY SUCTION 20MTR	ROLL	20m
AUS125G020	HOSE 125 MM PVC GREY SUCTION 20MTR	ROLL	20m
AUS150G020	HOSE 150 MM PVC GREY SUCTION 20MTR	ROLL	20m

PVC Heavy Duty Grey Suction

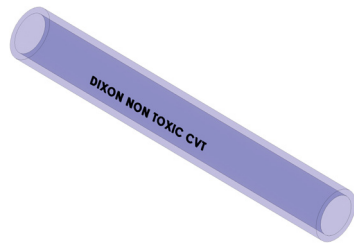


DIXON PART NO.	DESCRIPTION	UOM	PACK QTY
AUS032BHD020	HOSE 32 MM PVC BLUE PETROL RES 20MTR	ROLL	20m
AUS040BHD020	HOSE 38 MM PVC BLUE PETROL RES 20MTR	ROLL	20m
AUS050BHD020	HOSE 50 MM PVC BLUE PETROL RES 20MTR	ROLL	20m
AUS065BHD020	HOSE 63 MM PVC BLUE PETROL RES 20MTR	ROLL	20m
AUS076BHD020	HOSE 75 MM PVC BLUE PETROL RES 20MTR	ROLL	20m

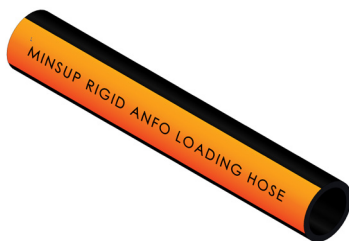
PVC Heavy Duty Blue Petrol & Oil Suction



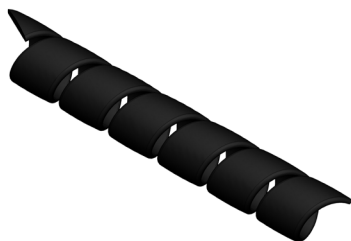
Complete hose data specification sheets are available upon request.

PVC Clear Tubing Hose

DIXON PART NO.	DESCRIPTION	UOM	PACK QTY
H1600330C	TUBING 3 MM PVC CLEAR 30MTR	ROLL	30m
H1600530C	TUBING 5 MM PVC CLEAR 30MTR	ROLL	30m
H1600630C	TUBING 6 MM PVC CLEAR 30MTR	ROLL	30m
H1600830C	TUBING 8 MM PVC CLEAR 30MTR	ROLL	30m
H1601030C	TUBING 10 MM PVC CLEAR 30MTR	ROLL	30m
H1601230C	TUBING 12 MM PVC CLEAR 30MTR	ROLL	30m
H1601630C	TUBING 16 MM PVC CLEAR 30MTR	ROLL	30m
H1602030C	TUBING 20 MM PVC CLEAR 30MTR	ROLL	30m
H1602530C	TUBING 25 MM PVC CLEAR 30MTR	ROLL	30m
H1604015C	HOSE 38 MM PVC CLEAR FOOD 15MTR COIL	ROLL	15m
H1605015C	HOSE 50 MM PVC CLEAR FOOD 15MTR COIL	ROLL	15m

Anfo Hose

DIXON PART NO.	DESCRIPTION	UOM	PACK QTY
05/100/01/124	ANFO HOSE 19 X 30M	EACH	30m
05/100/01/455	ANFO HOSE 25 X 60M	EACH	30m

Spiral Hose Guard - Black

DIXON PART NO.	DESCRIPTION	UOM	PACK QTY
R1220BK	SPIRAL GUARD TO SUIT HOSE OD 9 - 12MM	BOX	20
R1620B	SPIRAL GUARD TO SUIT HOSE OD 12 - 17MM	BOX	20
R2020B	SPIRAL GUARD TO SUIT HOSE OD 16 - 22MM	BOX	20
R2520B	SPIRAL GUARD TO SUIT HOSE OD 22 - 28MM	BOX	20
R3220B	SPIRAL GUARD TO SUIT HOSE OD 27 - 33MM	BOX	20
R4020B	SPIRAL GUARD TO SUIT HOSE OD 33 - 42MM	BOX	20
R5020B	SPIRAL GUARD TO SUIT HOSE OD 42 - 55MM	BOX	20
R6520B	SPIRAL GUARD TO SUIT HOSE OD 52 - 65MM	BOX	20
R7520B	SPIRAL GUARD TO SUIT HOSE OD 65 - 80MM	BOX	20
R9020B	SPIRAL GUARD TO SUIT HOSE OD 80 - 150MM	BOX	20
R11010B	SPIRAL GUARD TO SUIT HOSE OD 150MM	BOX	20

Expansion Joints

DIXON PART NO.	DESCRIPTION	UOM	PACK QTY
FJ050	EXPANSION JOINT EPDM 50MM TABLE E	EACH	1
FJ075	EXPANSION JOINT EPDM 75MM TABLE E	EACH	1
FJ100	EXPANSION JOINT EPDM 100MM TABLE E	EACH	1
FJ150	EXPANSION JOINT EPDM 150MM TABLE E	EACH	1
FJ200	EXPANSION JOINT EPDM 200MM TABLE E	EACH	1

Complete hose data specification sheets are available upon request.

DIXON PART NO.	DESCRIPTION	UOM	PACK QTY
NIR015	RUBBER INSERTION 1.5MM X 1200MM	EACH	10m
NIR03	RUBBER INSERTION 3MM X 1200MM	EACH	10m
NIR045	RUBBER INSERTION 4.5MM X 1200MM	EACH	10m
NIR06	RUBBER INSERTION 6MM X 1200MM	EACH	10m

Insertion Rubber



DIXON PART NO.	DESCRIPTION	UOM	PACK QTY
SIR060100	RUBBER NATURAL SKIRT 6MM X 100MM	EACH	30m
SIR060150	RUBBER NATURAL SKIRT 6MM X 150MM	EACH	30m
SIR060200	RUBBER NATURAL SKIRT 6MM X 200MM	EACH	30m
SIR060250	RUBBER NATURAL SKIRT 6MM X 250MM	EACH	30m
SIR100075	RUBBER NATURAL SKIRT 10MM X 075MM	EACH	30m
SIR100100	RUBBER NATURAL SKIRT 10MM X 100MM	EACH	30m
SIR100150	RUBBER NATURAL SKIRT 10MM X 150MM	EACH	30m
SIR100200	RUBBER NATURAL SKIRT 10MM X 200MM	EACH	30m
SIR100250	RUBBER NATURAL SKIRT 10MM X 250MM	EACH	30m
SIR101200	RUBBER NATURAL SKIRT 10MM X 1200MM	EACH	30m
SIR120075	RUBBER NATURAL SKIRT 12MM X 75MM	EACH	30m
SIR120100	RUBBER NATURAL SKIRT 12MM X 100MM	EACH	30m
SIR120125	RUBBER NATURAL SKIRT 12MM X 125MM	EACH	30m
SIR120150	RUBBER NATURAL SKIRT 12MM X 150MM	EACH	30m
SIR120200	RUBBER NATURAL SKIRT 12MM X 200MM	EACH	30m
SIR120250	RUBBER NATURAL SKIRT 12MM X 250MM	EACH	30m
SIR120300	RUBBER NATURAL SKIRT 12MM X 300MM	EACH	30m
SIR121200	RUBBER NATURAL SKIRT 12MM X 1200MM	EACH	30m
SIR160100	RUBBER NATURAL SKIRT 16MM X 100MM	EACH	30m
SIR160150	RUBBER NATURAL SKIRT 16MM X 150MM	EACH	30m
SIR160200	RUBBER NATURAL SKIRT 16MM X 200MM	EACH	30m
SIR160250	RUBBER NATURAL SKIRT 16MM X 250MM	EACH	30m
SIR161200	RUBBER NATURAL SKIRT 16MM X 1200MM	EACH	30m
SIR190075	RUBBER NATURAL SKIRT 19MM X 75MM	EACH	30m
SIR190100	RUBBER NATURAL SKIRT 19MM X 100MM	EACH	30m
SIR190150	RUBBER NATURAL SKIRT 19MM X 150MM	EACH	30m
SIR190200	RUBBER NATURAL SKIRT 19MM X 200MM	EACH	30m
SIR190250	RUBBER NATURAL SKIRT 19MM X 250MM	EACH	30m
SIR191200	RUBBER NATURAL SKIRT 19MM X 1200MM	EACH	30m

Skirting Rubber



Complete hose data specification sheets are available upon request.

Brass Gate Valves

DIXON PART NO.	DESCRIPTION	UOM	PACK QTY
GV050B	VALVE GATE 15NB BRASS	EACH	1
GV075B	VALVE GATE 20NB BRASS	EACH	1
GV100B	VALVE GATE 25NB BRASS	EACH	1
GV125B	VALVE GATE 32NB BRASS	EACH	1
GV150B	VALVE GATE 40NB BRASS	EACH	1
GV200B	VALVE GATE 50NB BRASS	EACH	1
GV250B	VALVE GATE 65NB BRASS	EACH	1
GV300B	VALVE GATE 80NB BRASS	EACH	1
GV400B	VALVE GATE 100NB BRASS	EACH	1

Flanged Gate Valves

DIXON PART NO.	DESCRIPTION	UOM	PACK QTY
GVNR-RW-1161-80	VALVE GATE 80NB CI FLGD	EACH	1
GVNR-RW-1161-100	VALVE GATE 100NB CI FLGD	EACH	1
GVNR-RW-1161-150	VALVE GATE 150NB CI FLGD	EACH	1
GVNR-RW-1161-200	VALVE GATE 200NB CI FLGD	EACH	1

Shouldered Gate Valves

DIXON PART NO.	DESCRIPTION	UOM	PACK QTY
GVNR-S-1161-080	VALVE GATE 80NB DCI NRS SHLD	EACH	1
GVNR-S-1161-100	VALVE GATE 100NB DCI NRS SHLD	EACH	1
GVNR-S-1161-150	VALVE GATE 150NB DCI NRS SHLD	EACH	1

Brass Swing Check Valves - BSP

DIXON PART NO.	DESCRIPTION	UOM	PACK QTY
BSCV012	VALVE CHECK 15NB BRASS	EACH	1
BSCV020	VALVE CHECK 20NB BRASS	EACH	1
BSCV025	VALVE CHECK 25NB BRASS	EACH	1
BSCV032	VALVE CHECK 32NB BRASS	EACH	1
BSCV040	VALVE CHECK 40NB BRASS	EACH	1
BSCV050	VALVE CHECK 50NB BRASS	EACH	1
BSCV065	VALVE CHECK 65NB BRASS	EACH	1
BSCV075	VALVE CHECK 80NB BRASS	EACH	1
BSCV100	VALVE CHECK 100NB BRASS	EACH	1

Flanged Check Valves

DIXON PART NO.	DESCRIPTION	UOM	PACK QTY
CVF-1161-080	VALVE CHECK 80NB CI FLGD	EACH	1
CVF-1161-100E	VALVE CHECK 100NB CI FLGD	EACH	1
CVF-1161-150E	VALVE CHECK 150NB CI FLGD	EACH	1

DIXON PART NO.	DESCRIPTION	UOM	PACK QTY
VWC-50E	VALVE DUO CHECK 50NB CV122S	EACH	1
VWC-65E	VALVE DUO CHECK 65NB CV122S	EACH	1
VWC-80E	VALVE DUO CHECK 80NB CV122S	EACH	1
VWC-100E	VALVE DUO CHECK 100NB CV122S	EACH	1
VWC-150E	VALVE DUO CHECK 150NB CV122S	EACH	1
VWC-200E	VALVE DUO CHECK 200NB CV122S	EACH	1
VWC-250E	VALVE DUO CHECK 250NB CV122S	EACH	1
VWC-300E	VALVE DUO CHECK 300NB CV122S	EACH	1

Wafer Duo Check Valves



DIXON PART NO.	DESCRIPTION	UOM	PACK QTY
SS1P006	VALVE BALL 6NB SS 1 PCE	EACH	1
SS1P010	VALVE BALL 10NB SS 1 PCE	EACH	1
SS1P012	VALVE BALL 15NB SS 1 PCE	EACH	1
SS1P020	VALVE BALL 20NB SS 1 PCE	EACH	1
SS1P025	VALVE BALL 25NB SS 1 PCE	EACH	1
SS1P032	VALVE BALL 32NB SS 1 PCE	EACH	1
SS1P040	VALVE BALL 40NB SS 1 PCE	EACH	1
SS1P050	VALVE BALL 50NB SS 1 PCE	EACH	1

1 Piece Stainless Steel Ball Valves



DIXON PART NO.	DESCRIPTION	UOM	PACK QTY
SS2P006	VALVE BALL 6NB SS 2 PCE	EACH	1
SS2P010	VALVE BALL 10NB SS 2 PCE	EACH	1
SS2P012	VALVE BALL 15NB SS 2 PCE	EACH	1
SS2P020	VALVE BALL 20NB SS 2 PCE	EACH	1
SS2P025	VALVE BALL 25NB SS 2 PCE	EACH	1
SS2P032	VALVE BALL 32NB SS 2 PCE	EACH	1
SS2P040	VALVE BALL 40NB SS 2 PCE	EACH	1
SS2P050	VALVE BALL 50NB SS 2 PCE	EACH	1

2 Piece Stainless Steel Ball Valves



DIXON PART NO.	DESCRIPTION	UOM	PACK QTY
SS3P015	VALVE BALL 15NB SS 3 PCE	EACH	1
SS3P020	VALVE BALL 20NB SS 3 PCE	EACH	1
SS3P025	VALVE BALL 25NB SS 3 PCE	EACH	1
SS3P032	VALVE BALL 32NB SS 3 PCE	EACH	1
SS3P040	VALVE BALL 40NB SS 3 PCE	EACH	1
SS3P050	VALVE BALL 50NB SS 3 PCE	EACH	1
SS3P065	VALVE BALL 65NB SS 3 PCE	EACH	1
SS3P075	VALVE BALL 75NB SS 3 PCE	EACH	1
SS3P100	VALVE BALL 100NB SS 3 PCE	EACH	1

3 Piece Stainless Steel Ball Valves



Brass Ball Valve PN25 with S/S Handle



DIXON PART NO.	DESCRIPTION	UOM	PACK QTY
BBVSTD010SS	VALVE BALL 10NB	EACH	1
BBVSTD012SS	VALVE BALL 15NB	EACH	1
BBVSTD020SS	VALVE BALL 20NB	EACH	1
BBVSTD025SS	VALVE BALL 25NB	EACH	1
BBVSTD032SS	VALVE BALL 32NB	EACH	1
BBVSTD040SS	VALVE BALL 40NB	EACH	1
BBVSTD050SS	VALVE BALL 50NB	EACH	1
BBVSTD065SS	VALVE BALL 65NB	EACH	1
BBVSTD075SS	VALVE BALL 80NB	EACH	1
BBVSTD100SS	VALVE BALL 100NB	EACH	1

Knife Gate Valves - Cast Iron



DIXON PART NO.	DESCRIPTION	UOM	PACK QTY
VKG-080	VALVE TURNFLO KNIFE GATE 80NB	EACH	1
VKG-100	VALVE TURNFLO KNIFE GATE 100NB	EACH	1
VKG-150	VALVE TURNFLO KNIFE GATE 150NB	EACH	1
VKG-200	VALVE TURNFLO KNIFE GATE 200NB	EACH	1

Butterfly Valves - Wafer



DIXON PART NO.	DESCRIPTION	UOM	PACK QTY
VBF-IBFW050	VALVE BUTTERFLY 50NB	EACH	1
VBF-IBFW065	VALVE BUTTERFLY 65NB	EACH	1
VBF-IBFW080	VALVE BUTTERFLY 80NB	EACH	1
VBF-IBFW100	VALVE BUTTERFLY 100NB	EACH	1
VBF-IBFW125	VALVE BUTTERFLY 125NB	EACH	1
VBF-IBFW150	VALVE BUTTERFLY 150NB	EACH	1
VBF-IBFW200	VALVE BUTTERFLY 200NB	EACH	1

DIXON PART NO.	DESCRIPTION	UOM	PACK QTY
BYLF025	STRAINER "Y" 25MM BSP BRASS	EACH	1
BYLF032	STRAINER "Y" 32MM BSP BRASS	EACH	1
BYLF040	STRAINER "Y" 40MM BSP BRASS	EACH	1
BYLF050	STRAINER "Y" 50MM BSP BRASS	EACH	1
SYS-050	STRAINER SYS 50NB SCRD S/STEEL TURNFLOW	EACH	1

DIXON PART NO.	DESCRIPTION	UOM	PACK QTY
FFS-PRV7838-50	ROMA VALVE FIG 212 100MM TABLE E	EACH	1
FFS-PRV213-100E	ROMA VALVE FIG 213 100NB TABLE E	EACH	1

DIXON PART NO.	DESCRIPTION	UOM	PACK QTY
YH23	25MM BSP RATIO 2:1	EACH	1
YH26	50MM BSP RATIO 2:1	EACH	1
YH1002	100MM FLG T/E RATIO 2:1	EACH	1

DIXON PART NO.	DESCRIPTION	UOM	PACK QTY
05/062/01/000	VALVE MINE WATER BRASS 62/01/000	EACH	1

Y Strainers - BSP



Roma Pressure Reducing Valves



Ratio Pressure Reducing Valves



25mm BSP



50mm BSP



100mm Table E

Brass Bendigo Valves



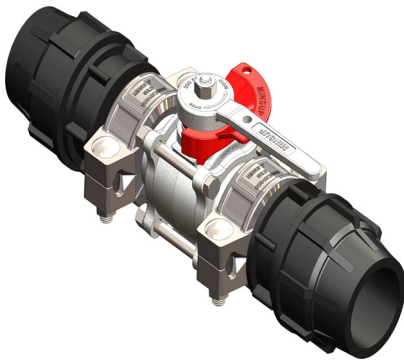
minsip

minsup Shouldered Butterfly Valve



DIXON PART NO.	DESCRIPTION	UOM	PACK QTY
08/002/374/00	VALVE SHLD BUTTERFLY 100MM	EACH	1
08/002/574/00	VALVE SHLD BUTTERFLY 150MM	EACH	1

Valve Assemblies



DIXON PART NO.	DESCRIPTION	UOM	PACK QTY
50-VALXPLAS-ASY	2" MINSUP SHLD ECONOVALVE X PLASSON CPLG	EACH	1

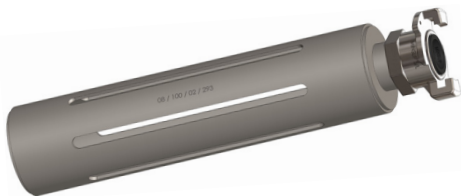


DIXON PART NO.	DESCRIPTION	UOM	PACK QTY
100-VALXPLAS-ASY	4" MINSUP SHLD BUTTERFLY VALVE X PLASSON CPLG	EACH	1

Suction Sieves



DIXON PART NO.	DESCRIPTION	UOM	PACK QTY
08/100/02/292	PUMP SUCTION SIEVES 50MM SURELOCK	EACH	1
08/100/02/293	PUMP SUCTION SIEVES 100MM SURELOCK	EACH	1

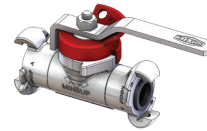


Stainless Steel Strainer

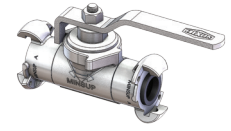


DIXON PART NO.	DESCRIPTION	UOM	PACK QTY
SST030	100MM SS304 STRAINER 3MM	EACH	1
SST050	100MM SS304 STRAINER 5MM	EACH	1

DIXON PART NO.	DESCRIPTION	UOM	PACK QTY
08/062/110/00LO	A TYPE X A TYPE WITH LOCKOUT 1"	EACH	15
08/062/110/00	A TYPE X A TYPE	EACH	15

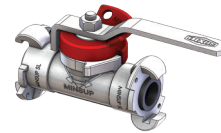
Econovalves **minsip**


A Type

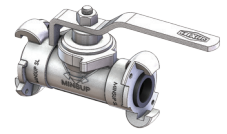


A Type

DIXON PART NO.	DESCRIPTION	UOM	PACK QTY
08/062/110/00LO	SURELOCK X SURELOCK WITH LOCKOUT 1"	EACH	15
08/062/111/00	SURELOCK X SURELOCK	EACH	15

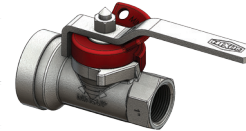


Surelock

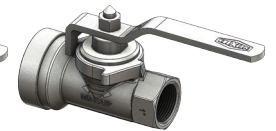


Surelock

DIXON PART NO.	DESCRIPTION	UOM	PACK QTY
08/062/118/00LO	50NB SHOULDERED X 25NB BSPF WITH LOCKOUT	EACH	15
08/062/118/00	50NB SHOULDERED X 25NB BSPF	EACH	15

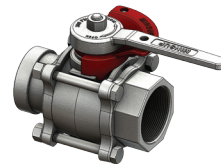


Lockout



Non Lockout

DIXON PART NO.	DESCRIPTION	UOM	PACK QTY
08/062/56/000LO	50NB BSPF X SHOULDERED WITH LOCKOUT	EACH	4



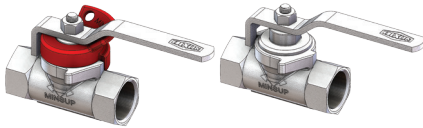
Lockout

DIXON PART NO.	DESCRIPTION	UOM	PACK QTY
08/062/849/00LO	50NB SHOULDERED X SHOULDERED WITH LOCKOUT	EACH	4



Lockout

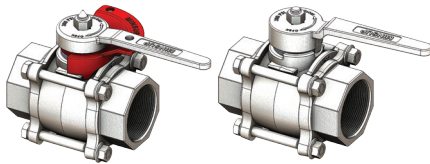
minsup Econovalves



Lockout

Non Lockout

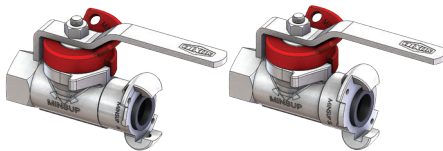
DIXON PART NO.	DESCRIPTION	UOM	PACK QTY
08/062/03/000	12.5MM BSPF X BSPF	EACH	1
08/062/114/00LO	20MM BSPF X BSPF WITH LOCKOUT	EACH	20
08/062/113/00	25MM BSPF X BSPF	EACH	15
08/062/113/00LO	20MM BSPF X BSPF WITH LOCKOUT	EACH	15



Lockout

Non Lockout

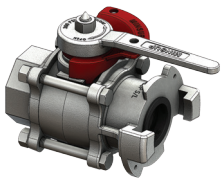
DIXON PART NO.	DESCRIPTION	UOM	PACK QTY
08/062/847/00LO	40MM BSPF X BSPF WITH LOCKOUT	EACH	4
08/062/848/00LO	50MM BSPF X BSPF WITH LOCKOUT	EACH	4
08/062/848/00	50MM BSPF X BSPF	EACH	4



BSP x A Type

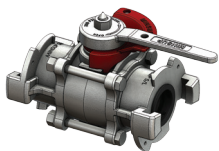
BSP x Surelock

DIXON PART NO.	DESCRIPTION	UOM	PACK QTY
08/062/104/00LO	25MM BSPF X A TYPE WITH LOCKOUT	EACH	15
08/062/172/00LO	25MM BSPF X SURELOCK WITH LOCKOUT	EACH	15



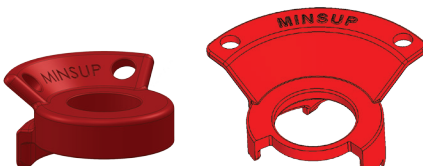
Lockout

DIXON PART NO.	DESCRIPTION	UOM	PACK QTY
08/062/868/00LO	50MM BSPF X SURELOCK WITH LOCKOUT	EACH	4



Lockout

DIXON PART NO.	DESCRIPTION	UOM	PACK QTY
08/062/869/00LO	MEDIUM SURELOCK X SURELOCK WITH LOCKOUT	EACH	3



ELOK100C

ELOK200C

DIXON PART NO.	DESCRIPTION	UOM	PACK QTY
ELOK100C	20-25MM ECONOVALVE LOCKOUT HANDLE	EACH	1
ELOK200C	40-50MM ECONOVALVE LOCKOUT HANDLE	EACH	1

BSP Footvalves



DIXON PART NO.	DESCRIPTION	UOM	PACK QTY
BFV050	FOOTVALVE BRASS 50MM BSP	EACH	1
BFV075	FOOTVALVE BRASS 75MM BSP	EACH	1
BFV100	FOOTVALVE BRASS 100MM BSP	EACH	1

Size	MALE & FEMALE	FEMALE & FEMALE	UOM	PACK QTY
	DIXON PART NO.	DIXON PART NO.		
15NB	FMG-BMF-15	FMG-BFF-15	EACH	1
20NB	FMG-BMF-20	FMG-BFF-20	EACH	1
25NB	FMG-BMF-25	FMG-BFF-25	EACH	1
32NB	FMG-BMF-32	FMG-BFF-32	EACH	1
40NB	FMG-BMF-40	FMG-BFF-40	EACH	1
50NB	FMG-BMF-50	FMG-BFF-50	EACH	1
80NB	FMG-BMF-80	FMG-BFF-80	EACH	1
100NB	FMG-BMF-100	FMG-BFF-100	EACH	1

Screwed 90° BSP Bends - Galv Malleable



Female x Female



Male x Female

Size	GALV MALLEABLE	316 STAINLESS STEEL	UOM	PACK QTY
	DIXON PART NO.	DIXON PART NO.		
15NB	FMG-CAP-15	SS16C015	EACH	1
20NB	FMG-CAP-20	SS16C020	EACH	1
25NB	FMG-CAP-25	SS16C025	EACH	1
32NB	FMG-CAP-32	SS16C032	EACH	1
40NB	FMG-CAP-40	SS16C040	EACH	1
50NB	FMG-CAP-50	SS16C050	EACH	1
65NB	FMG-CAP-65	SS16C065	EACH	1
80NB	FMG-CAP-80	SS16C080	EACH	1
100NB	FMG-CAP-100	SS16C100	EACH	1

Screwed BSP Caps



Galvanised Malleable



Stainless Steel

Screwed 90° BSP Elbows Female & Female



Size	GALV MALLEABLE	316 STAINLESS STEEL	UOM	PACK QTY
	DIXON PART NO.	DIXON PART NO.		
8NB	FMG-EFF-8	SS16EL008	EACH	1
10NB	FMG-EFF-10	SS16EL010	EACH	1
15NB	FMG-EFF-15	SS16EL015	EACH	1
20NB	FMG-EFF-20	SS16EL020	EACH	1
25NB	FMG-EFF-25	SS16EL025	EACH	1
32NB	FMG-EFF-32	SS16EL032	EACH	1
40NB	FMG-EFF-40	SS16EL040	EACH	1
50NB	FMG-EFF-50	SS16EL050	EACH	1
65NB	FMG-EFF-65	SS16EL065	EACH	1
80NB	FMG-EFF-80	SS16EL080	EACH	1
100NB	FMG-EFF-100	SS16EL100	EACH	1

Screwed 90° BSP Elbows Male & Female



Size	GALV MALLEABLE	316 STAINLESS STEEL	UOM	PACK QTY
	DIXON PART NO.	DIXON PART NO.		
8NB	FMG-EMF-8	SS16ELMF008	EACH	1
10NB	FMG-EMF-10	SS16ELMF010	EACH	1
15NB	FMG-EMF-15	SS16ELMF015	EACH	1
20NB	FMG-EMF-20	SS16ELMF020	EACH	1
25NB	FMG-EMF-25	SS16ELMF025	EACH	1
32NB	FMG-EMF-32	SS16ELMF032	EACH	1
40NB	FMG-EMF-40	SS16ELMF040	EACH	1
50NB	FMG-EMF-50	SS16ELMF050	EACH	1
65NB	FMG-EMF-65	SS16ELMF065	EACH	1
80NB	FMG-EMF-80	SS16ELMF080	EACH	1
100NB	FMG-EMF-100	SS16ELMF100	EACH	1

Screwed BSP Hex Nipples



Size	GALV MALLEABLE	316 STAINLESS STEEL	UOM	PACK QTY
	DIXON PART NO.	DIXON PART NO.		
6NB		SS16HN006	EACH	1
8NB	FMG-HN-8	SS16HN008	EACH	1
10NB	FMG-HN-10	SS16HN010	EACH	1
15NB	FMG-HN-15	SS16HN015	EACH	1
20NB	FMG-HN-20	SS16HN020	EACH	1
25NB	FMG-HN-25	SS16HN025	EACH	1
32NB	FMG-HN-32	SS16HN032	EACH	1
40NB	FMG-HN-40	SS16HN040	EACH	1
50NB	FMG-HN-50	SS16HN050	EACH	1
65NB	FMG-HN-65	SS16HN065	EACH	1
80NB	FMG-HN-80	SS16HN080	EACH	1
100NB	FMG-HN-100	SS16HN100	EACH	1

Size	GALV MALLEABLE	316 STAINLESS STEEL	UOM	PACK QTY
	DIXON PART NO.	DIXON PART NO.		
8x6	FMG-HN-8-6	SS16N00806	EACH	1
10x8	FMG-HN-10-8	SS16N01008	EACH	1
15x8	FMG-HN-15-8	SS16N01508	EACH	1
15x10	FMG-HN-15-10	SS16N01510	EACH	1
20x8	FMG-HN-20-8		EACH	1
20x10	FMG-HN-20-10		EACH	1
20x15	FMG-HN-20-15	SS16N02015	EACH	1
25x15	FMG-HN-25-15	SS16N02515	EACH	1
25x20	FMG-HN-25-20	SS16N02520	EACH	1
32x15	FMG-HN-32-15		EACH	1
32x25	FMG-HN-32-25	SS16N03225	EACH	1
40x20	FMG-HN-40-20		EACH	1
40x25	FMG-HN-40-25	SS16N04025	EACH	1
40x32	FMG-HN-40-32	SS16N04032	EACH	1
50x25	FMG-HN-50-25	SS16N05025	EACH	1
50x32	FMG-HN-50-32		EACH	1
50x40	FMG-HN-50-40	SS16N05040	EACH	1
65x50	FMG-HN-65-50	SS16N06550	EACH	1
80x50	FMG-HN-80-50	SS16N08050	EACH	1
80x65	FMG-HN-80-65	SS16N08065	EACH	1
100x50	FMG-HN-100-50	SS16N10050	EACH	1
100x80	FMG-HN-100-80	SS16N10080	EACH	1

Screwed BSP Reducing Hex Nipples



DIXON PART NO.	DESCRIPTION	UOM	PACK QTY
FMG-HP-6	PLUG 6NB HOLLOW GALV MALLEABLE	EACH	1
FMG-HP-8	PLUG 8NB HOLLOW GALV MALLEABLE	EACH	1
FMG-HP-10	PLUG 10NB HOLLOW GALV MALLEABLE	EACH	1
FMG-HP-15	PLUG 15NB HOLLOW GALV MALLEABLE	EACH	1
FMG-HP-20	PLUG 20NB HOLLOW GALV MALLEABLE	EACH	1
FMG-HP-25	PLUG 25NB HOLLOW GALV MALLEABLE	EACH	1
FMG-HP-32	PLUG 32NB HOLLOW GALV MALLEABLE	EACH	1
FMG-HP-40	PLUG 40NB HOLLOW GALV MALLEABLE	EACH	1
FMG-HP-50	PLUG 50NB HOLLOW GALV MALLEABLE	EACH	1
FMG-HP-65	PLUG 65NB HOLLOW GALV MALLEABLE	EACH	1
FMG-HP-80	PLUG 80NB HOLLOW GALV MALLEABLE	EACH	1
FMG-HP-100	PLUG 100NB HOLLOW GALV MALLEABLE	EACH	1

Screwed BSP Hollow Plugs



Screwed BSP Sockets



Size	GALV MALLEABLE	316 STAINLESS STEEL	UOM	PACK QTY
	DIXON PART NO.	DIXON PART NO.		
6NB		SS16S006	EACH	1
8NB	FMG-SOC-8	SS16S008	EACH	1
10NB	FMG-SOC-10	SS16S010	EACH	1
15NB	FMG-SOC-15	SS16S015	EACH	1
20NB	FMG-SOC-20	SS16S020	EACH	1
25NB	FMG-SOC-25	SS16S025	EACH	1
32NB	FMG-SOC-32	SS16S032	EACH	1
40NB	FMG-SOC-40	SS16S040	EACH	1
50NB	FMG-SOC-50	SS16S050	EACH	1
65NB	FMG-SOC-65	SS16S065	EACH	1
80NB	FMG-SOC-80	SS16S080	EACH	1
100NB	FMG-SOC-100	SS16S100	EACH	1

BSP Screwed Reducing Sockets



Size	GALV MALLEABLE	UOM	PACK QTY
	DIXON PART NO.		
10x8	FMG-SOC-10-8	EACH	1
15x8	FMG-SOC-15-8	EACH	1
15x10	FMG-SOC-15-10	EACH	1
20x10	FMG-SOC-20-10	EACH	1
20x15	FMG-SOC-20-15	EACH	1
25x15	FMG-SOC-25-15	EACH	1
25x20	FMG-SOC-25-20	EACH	1
32x15	FMG-SOC-32-15	EACH	1
32x20	FMG-SOC-32-20	EACH	1
32x25	FMG-SOC-32-25	EACH	1
40x15	FMG-SOC-40-15	EACH	1
40x20	FMG-SOC-40-20	EACH	1
40x25	FMG-SOC-40-25	EACH	1
40x32	FMG-SOC-40-32	EACH	1
50x20	FMG-SOC-50-20	EACH	1
50x25	FMG-SOC-50-25	EACH	1
50x32	FMG-SOC-50-32	EACH	1
50x40	FMG-SOC-50-40	EACH	1
65x40	FMG-SOC-65-40	EACH	1
65x50	FMG-SOC-65-50	EACH	1
80x50	FMG-SOC-80-50	EACH	1
80x65	FMG-SOC-80-65	EACH	1
100x50	FMG-SOC-100-50	EACH	1
100x80	FMG-SOC-100-80	EACH	1

Size	GALV MALLEABLE	316 STAINLESS STEEL	UOM	PACK QTY
	DIXON PART NO.	DIXON PART NO.		
6NB		SS16T006	EACH	1
8NB	FMG-TEE-8	SS16T008	EACH	1
10NB	FMG-TEE-10	SS16T010	EACH	1
15NB	FMG-TEE-15	SS16T015	EACH	1
20NB	FMG-TEE-20	SS16T020	EACH	1
25NB	FMG-TEE-25	SS16T025	EACH	1
32NB	FMG-TEE-32	SS16T032	EACH	1
40NB	FMG-TEE-40	SS16T040	EACH	1
50NB	FMG-TEE-50	SS16T050	EACH	1
65NB	FMG-TEE-65	SS16T065	EACH	1
80NB	FMG-TEE-80	SS16T080	EACH	1
100NB	FMG-TEE-100	SS16T100	EACH	1

Screwed BSP Tee's

Size	GALV MALLEABLE	316 STAINLESS STEEL	UOM	PACK QTY
	DIXON PART NO.	DIXON PART NO.		
10NB		SS16FU010	EACH	1
15NB	FMG-UBS-15	SS16FU015	EACH	1
20NB	FMG-UBS-20	SS16FU020	EACH	1
25NB	FMG-UBS-25	SS16FU025	EACH	1
32NB	FMG-UBS-32	SS16FU032	EACH	1
40NB	FMG-UBS-40	SS16FU040	EACH	1
50NB	FMG-UBS-50	SS16FU050	EACH	1
80NB	FMG-UBS-80	SS16FU080	EACH	1
100NB	FMG-UBS-100	SS16FU100	EACH	1

Screwed BSP Unions

DIXON PART NO.	DESCRIPTION	UOM	PACK QTY
FMG-FD-15	FLANGE 15NB SCREWED D GALV MALLEABLE	EACH	1
FMG-FD-20	FLANGE 20NB SCREWED D GALV MALLEABLE	EACH	1
FMG-FD-25	FLANGE 25NB SCREWED D GALV MALLEABLE	EACH	1
FMG-FD-32	FLANGE 32NB SCREWED D GALV MALLEABLE	EACH	1
FMG-FD-40	FLANGE 40NB SCREWED D GALV MALLEABLE	EACH	1
FMG-FD-50	FLANGE 50NB SCREWED D GALV MALLEABLE	EACH	1
FMG-FD-65	FLANGE 65NB SCREWED D GALV MALLEABLE	EACH	1
FMG-FD-80	FLANGE 80NB SCREWED D GALV MALLEABLE	EACH	1
FMG-FD-100	FLANGE 100NB SCREWED D GALV MALLEABLE	EACH	1
FMG-FD-150	FLANGE 150NB SCREWED D GALV MALLEABLE	EACH	1

Screwed BSP Flanges

Screwed BSP Reducing Bushes



Size	GALV MALLEABLE	316 STAINLESS STEEL	UOM	PACK QTY
	DIXON PART NO.	DIXON PART NO.		
8x6	FMG-BUS-8-6		EACH	1
10x6	FMG-BUS-10-6		EACH	1
10x8	FMG-BUS-10-8	SS16B1008	EACH	1
15x8	FMG-BUS-15-8		EACH	1
15x10	FMG-BUS-15-10	SS16B1510	EACH	1
20x8	FMG-BUS-20-8		EACH	1
20x10	FMG-BUS-20-10		EACH	1
20x15	FMG-BUS-20-15	SS16B2015	EACH	1
25x8	FMG-BUS-25-8		EACH	1
25x10	FMG-BUS-25-10		EACH	1
25x15	FMG-BUS-25-15	SS16B2515	EACH	1
25x20	FMG-BUS-25-20	SS16B2520	EACH	1
32x15	FMG-BUS-32-15		EACH	1
32x20	FMG-BUS-32-20	SS16B3220	EACH	1
32x25	FMG-BUS-32-25	SS16B3225	EACH	1
40x15	FMG-BUS-40-15		EACH	1
40x25	FMG-BUS-40-25	SS16B4025	EACH	1
40x32	FMG-BUS-40-32	SS16B4032	EACH	1
50x15	FMG-BUS-50-15		EACH	1
50x20	FMG-BUS-50-20		EACH	1
50x25	FMG-BUS-50-25	SS16B5025	EACH	1
50x32	FMG-BUS-50-32	SS16B5032	EACH	1
50x40	FMG-BUS-50-40	SS16B5040	EACH	1
65x25	FMG-BUS-65-25		EACH	1
65x40	FMG-BUS-65-40	SS16B6540	EACH	1
65x50	FMG-BUS-65-50	SS16B6550	EACH	1
80x25	FMG-BUS-80-25		EACH	1
80x40	FMG-BUS-80-40		EACH	1
80x50	FMG-BUS-80-50	SS16B8050	EACH	1
80x65	FMG-BUS-80-65	SS16B8065	EACH	1
100x50	FMG-BUS-100-50	SS16B100050	EACH	1
100x65	FMG-BUS-100-65	SS16B10065	EACH	1
100x80	FMG-BUS-100-80	SS16B10080	EACH	1
150x100	FMG-BUS-150-100		EACH	1

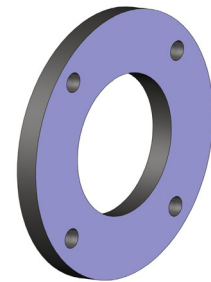
Screwed BSP Reducing Tee's



DIXON PART NO.	DESCRIPTION	UOM	PACK QTY
FMG-TEE-32-25	TEE REDUCING 32X25 GALV MALLEABLE	EACH	1
FMG-TEE-50-25	TEE REDUCING 50X25 GALV MALLEABLE	EACH	1
FMG-TEE-65-50	TEE REDUCING 65X50 GALV MALLEABLE	EACH	1

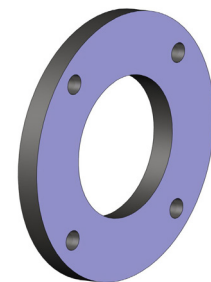
Size	SLIP ON WELD	BLIND	UOM	PACK QTY
	DIXON PART NO.	DIXON PART NO.		
100NB	FL-PS-100D	FL-PSB-100D	EACH	1
150NB	FL-PS-150X165D	FL-PSB-150D	EACH	1
150x168	FL-PS-150X168D		EACH	1
200NB	FL-PS-200D	FL-PSB-200D	EACH	1
250NB	FL-PS-250D		EACH	1
300NB	FL-PS-300D	FL-PSB-300D	EACH	1

Carbon Steel Plate Flanges - Table D



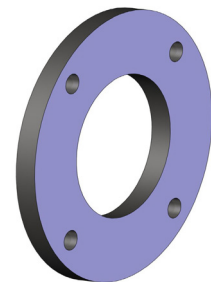
Size	SLIP ON WELD	BLIND	UOM	PACK QTY
	DIXON PART NO.	DIXON PART NO.		
25NB	FL-PS-25E	FL-PSB-25E	EACH	1
32NB	FL-PS-32E	FL-PSB-32E	EACH	1
40NB	FL-PS-40E	FL-PSB-40E	EACH	1
50NB	FL-PS-50E	FL-PSB-50E	EACH	1
65NB	FL-PS-65E	FL-PSB-65E	EACH	1
80NB	FL-PS-80E	FL-PSB-80E	EACH	1
100NB	FL-PS-100E	FL-PSB-100E	EACH	1
125NB	FL-PS-125E	FL-PSB-125E	EACH	1
150NB	FL-PS-150E	FL-PSB-150E	EACH	1
150x168	FL-PS-150X168E		EACH	1
200NB	FL-PS-200E	FL-PSB-200E	EACH	1
250NB	FL-PS-250E	FL-PSB-250E	EACH	1
300NB	FL-PS-300E		EACH	1

Carbon Steel Plate Flanges - Table E



DIXON PART NO.	DESCRIPTION	UOM	PACK QTY
SS16TES050	FLANGE SS316LIP ON 50NB TABLE E SS316	EACH	1
SS16TES075	FLANGE SS316LIP ON 80NB TABLE E SS316	EACH	1
SS16TES100	FLANGE SS316LIP ON 100NB TABLE E SS316	EACH	1
SS16TES150	FLANGE SS316LIP ON 150NB TABLE E SS316	EACH	1
SS16TES200	FLANGE SS316LIP ON 200NB TABLE E SS316	EACH	1

316 Stainless Steel Plate Flanges

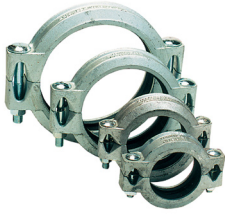


DIXON PART NO.	DESCRIPTION	UOM	PACK QTY
PMGB-25	PIPE 25NB MED GALV SCREWED 6.5 MT	EACH	6.5m
PMGB-32	PIPE 32NB MED GALV SCREWED 6.5 MT	EACH	6.5m
PMGB-40	PIPE 40NB MED GALV SCREWED 6.5 MT	EACH	6.5m
PMGB-50	PIPE 50NB MED GALV SCREWED 6.5 MT	EACH	6.5m
PMGB-65	PIPE 65NB MED GALV SCREWED 6.5 MT	EACH	6.5m

Galvanised Medium Wall Pipe



minsip Galv Shouldered Couplings



DIXON PART NO.	DESCRIPTION	UOM	PACK QTY
08/048/20/000	COUPLING 50NB GALV SHLD 08/048/20/000	EACH	1
08/048/20/002	COUPLING 80NB GALV SHLD 08/048/20/002	EACH	1
08/048/20/003	COUPLING 100NB GALV SHLD 08/048/20/003	EACH	1
08/048/20/005	COUPLING 150NB GALV SHLD 08/048/20/005	EACH	1
08/048/20/006	COUPLING 200NB GALV SHLD 08/048/20/006	EACH	1
08/048/20/007	COUPLING 250NB GALV SHLD 08/048/20/007	EACH	1
08/048/20/008	COUPLING 300NB GALV SHLD 08/048/20/008	EACH	1

minsip Quick Release Shouldered Couplings



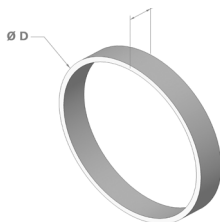
DIXON PART NO.	DESCRIPTION	UOM	PACK QTY
08/048/19/000G	COUPLING SHLD QU/RELEASE 50MM 48/19/000	EACH	1
08/048/19/002G	COUPLING SHLD QU/RELEASE 80MM 48/19/002	EACH	1
08/048/19/003G	COUPLING SHLD QU/RELEASE 100MM 48/19/003	EACH	1
08/048/19/005G	COUPLING SHLD QU RELEASE 150MM 48/19/005	EACH	1
08/048/20/020G	COUPLING SHLD GALV 350MM 48/20/020	EACH	1

minsip Seals for Galv Shouldered Couplings



DIXON PART NO.	DESCRIPTION	UOM	PACK QTY
05/048/22/000	RUBBER 50NB SHOULDERED 005/048/22/000	EACH	1
05/048/22/002	RUBBER 80NB SHOULDERED 005/048/22/002	EACH	1
05/048/22/003	RUBBER 100NB SHOULDERED 005/048/22/003	EACH	1
05/048/22/005	RUBBER 150NB SHOULDERED 005/048/22/005	EACH	1
05/048/22/006	RUBBER 200NB SHOULDERED 005/048/22/006	EACH	1

Shoulder Rings



DIXON PART NO.	DESCRIPTION	UOM	PACK QTY
08/048/18/000	RING STEEL 50NB SHOULDERED 08/048/18/000	EACH	1
08/048/18/002	RING STEEL 80NB SHOULDERED 08/048/18/002	EACH	1
08/048/18/003	RING STEEL 100NB SHOULDERED 08/048/18/003	EACH	1
08/048/18/005	RING STEEL 150NB SHOULDERED 08/048/18/005	EACH	1
08/048/18/006	RING STEEL 200NB SHOULDERED 08/048/18/006	EACH	1
08/048/18/008	RING STEEL 300NB SHOULDERED 08/048/18/008	EACH	

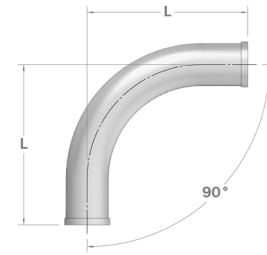
Shouldered x BSP Screwed Adaptors



DIXON PART NO.	DESCRIPTION	UOM	PACK QTY
08/048/10/000	ADP SCREWED 50NB GALV SHLD 08/048/10/000	EACH	1
08/048/10/002	ADP SCREWED 80NB GALV SHLD 08/048/10/002	EACH	1
08/048/10/003	ADP SCREWED 100NB GALV SHLD 08/048/10/003	EACH	1
08/048/10/005	ADP SCREWED 150NB GALV SHLD 08/048/10/005	EACH	1

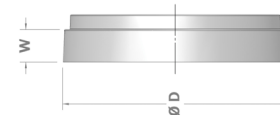
DIXON PART NO.	DESCRIPTION	UOM	PACK QTY
08/048/31/000	BEND L/R 50NB X 90 GALV SHLD 08/048/31/000	EACH	1
08/048/31/002	BEND L/R 80NB X 90 GALV SHLD 08/048/31/002	EACH	1
08/048/31/003	BEND L/R 100NB X 90 GALV SHLD 08/048/31/003	EACH	1
08/048/31/005	BEND L/R 150NB X 90 GALV SHLD 08/048/31/005	EACH	1

Galv Shouldered Bends



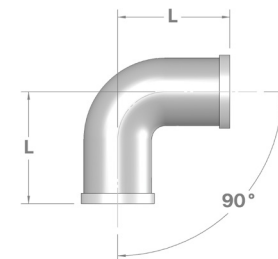
DIXON PART NO.	DESCRIPTION	UOM	PACK QTY
08/048/03/000	BLANK END 50NB GALV SHLD 08/048/03/000	EACH	1
08/048/03/002	BLANK END 80NB GALV SHLD 08/048/03/002	EACH	1
08/048/03/003	BLANK END 100NB GALV SHLD 08/048/03/003	EACH	1
08/048/03/005	BLANK END 150NB GALV SHLD 08/048/03/005	EACH	1

Galv Shouldered Blank Ends



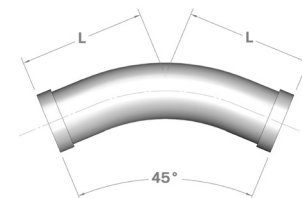
DIXON PART NO.	DESCRIPTION	UOM	PACK QTY
08/048/01/000T	ELBOW 50NB X 90 GALV SHLD 08/048/01/000T	EACH	1
08/048/01/002T	ELBOW 80NB X 90 GALV SHLD 08/048/01/002T	EACH	1
08/048/01/003T	ELBOW 100NB X 90 GALV SHLD 08/048/01/003T	EACH	1
08/048/01/005T	ELBOW 150NB X 90 GALV SHLD 08/048/01/005T	EACH	1
08/048/01/006T	ELBOW 200NB X 90 GALV SHLD 08/048/01/006T	EACH	1

Galv Shouldered Elbows - 90°



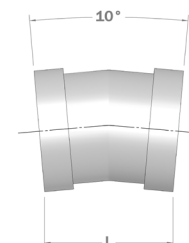
DIXON PART NO.	DESCRIPTION	UOM	PACK QTY
08/048/02/000T	ELBOW 50NB X 45 GALV SHLD 08/048/02/000T	EACH	1
08/048/02/002T	ELBOW 80NB X 45 GALV SHLD 08/048/02/002T	EACH	1
08/048/02/003T	ELBOW 100NB X 45 GALV SHLD 08/048/02/003T	EACH	1
08/048/02/005T	ELBOW 150 X 45 GALV SHLD 08/048/02/005T	EACH	1

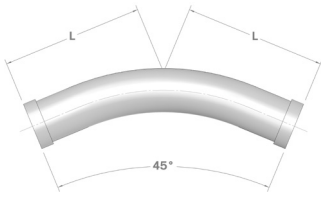
Galv Shouldered Elbows - 45°



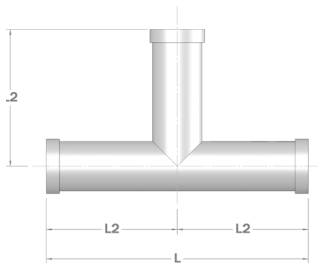
DIXON PART NO.	DESCRIPTION	UOM	PACK QTY
08/048/16/000	SETTING PIECE 50NB X 10 GALV SHOULDERED	EACH	1
08/048/16/002	SETTING PIECE 80NB X 10 GALV SHOULDERED	EACH	1
08/048/16/003	SETTING PIECE 100NB X 10 GALV SHOULDERED	EACH	1
08/048/16/005	SETTING PIECE 150NB X 10 GALV SHOULDERED	EACH	1

Galv Shouldered Setting Piece

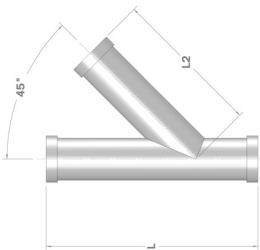


Galv Shouldered Spring Bends

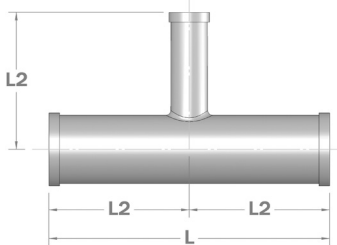
DIXON PART NO.	DESCRIPTION	UOM	PACK QTY
08/048/34/000T	SPRING BEND 50NB X 135 GALV SHOULDERED	EACH	1
08/048/34/002T	SPRING BEND 80NB X 135 GALV SHOULDERED	EACH	1
08/048/34/003T	SPRING BEND 100NB X 135 GALV SHOULDERED	EACH	1

Galv Shouldered Tee's

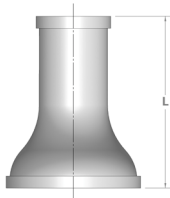
DIXON PART NO.	DESCRIPTION	UOM	PACK QTY
08/048/05/000T	TEE 50NB GALV SHOULDERED 08/048/005/000T	EACH	1
08/048/05/002T	TEE 80NB GALV SHOULDERED 08/048/005/002T	EACH	1
08/048/05/003T	TEE 100NB GALV SHOULDERED 08/048/005/003T	EACH	1
08/048/05/005T	TEE 150NB GALV SHOULDERED 08/048/005/005T	EACH	1

Galv Shouldered Offset Tee's

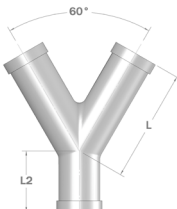
DIXON PART NO.	DESCRIPTION	UOM	PACK QTY
08/048/09/000T	OFFSET TEE 50 X 45 GALV SHLD 08/048/09/000T	EACH	1
08/048/09/002T	OFFSET TEE 80 V 45 GALV SHLD 08/048/09/002T	EACH	1
08/048/09/003T	OFFSET TEE 100 X 45 GALV SHLD 08/048/09/003T	EACH	1

Galv Shouldered Reducing Tee's

DIXON PART NO.	DESCRIPTION	UOM	PACK QTY
08/048/08/003T	TEE REDUCING 100 X 50 GALV SHLD 8/048/08/003T	EACH	1

Galv Shouldered Reducers

DIXON PART NO.	DESCRIPTION	UOM	PACK QTY
08/048/14/001T	REDUCER 80 X 50 GALV SHLD 08/048/14/001T	EACH	1
08/048/14/002T	REDUCER 100 X 50 GALV SHLD 08/048/14/002T	EACH	1
08/048/14/011T	REDUCER 100 X 80 GALV SHLD 08/048/14/011T	EACH	1
08/048/14/013T	REDUCER 150 X 80 GALV SHLD 08/048/14/013T	EACH	1
08/048/14/016T	REDUCER 150 X 100 GALV SHLD 08/048/14/016T	EACH	1

Galv Shouldered Y Piece

DIXON PART NO.	DESCRIPTION	UOM	PACK QTY
08/048/32/002T	Y PIECE 50NB GALV SHLD 08/048/32/002T	EACH	1
08/048/32/003T	Y PIECE 100NB GALV SHLD 08/048/32/003T	EACH	1

Quotation Form Pressure ANFO Loaders



Minsup™ pressure loaders are manufactured in several sizes 45, 100, 200, 250, 500 kg capacities and are designed for loading prilled ammonium nitrate/ fuel oil (ANFO) in varying diameter drill holes, both in horizontal and vertical positions. After the loader has been filled to capacity, it is pressurised by compressed air to the pre-determined discharge pressure, thus the rate of discharge can be varied to obtain the required density and charge rate.

Specifications	
Designed & Manufactured:	In accordance with AS1210
Design Pressure:	690 kPa
Test Pressure:	1035 kPa
Working Pressure	345 kPa
Design Temperature:	38°C

1. What size/capacity is required?

Anfo Size	Volume	Actual Anfo Capacity	
45kg	68 L	54kg	045
100kg	146 L	117kg	100
200kg	268 L	214kg	200
250kg	336 L	269kg	250
250kg <i>squat</i>	263 L	210kg	250
500kg	836 L	669kg	500
500kg <i>squat</i>	631 L	504kg	500

Note: ANFO density = 800kg/m³

2. Body material is mild steel:

Optional stainless steel available on 500kg models only.
MS - Mild Steel

3. If size/capacity = 250 OR 500:

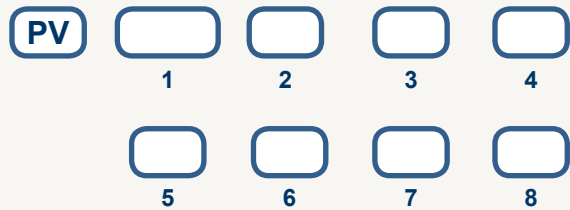
Optional squat version is available to reduce overall height.
(Refer table for dimensions)

T - Standard		Q - Squat
045	250	250
100		500
200		

4. Is on-site servicing of internal sealing cone required?

If **Yes** = F - Flanged Opening on Head, Sealing Cone Replaceable
If **No** = S - Shouldered Opening Sealing Cone Permanent

Pressure Vessel Designation



EXAMPLE

PV045MSTFOFMD - Pressure Vessel, 45kg capacity, mild steel body, standard height, flanged opening, open filler cone, frame mounted, manifold and dual remote control.

5. Does unit require lid and trash screen to aid breaking of ANFO and prevention of foreign objects from entering unit when not in use?

If **Yes** = L - Lid and Trash Screen

If **No** = O - Open Filler Cone (Standard)

6. Is unit required to be self standing or mounted?

F = Self Standing (frame)

All vessels come with frames to aid in shipping, Customer to remove if not required.

7. Do you require standard Minsup™ air system to be fitted?

M = Yes (go to question 8) (manifold and valves to be fitted)

X = No (end of quote) (no manifold)

8. What method of operation is required?

M = Manual Valve Control.

S = Actuated Loading Valve Control (single remote)

D = Actuated Loading & Venturi Valve Control (dual remote)
(this option allows blowing facility for cleaning of holes).

X = No Controls (only when no manifold specified in question 7).

Additional Notes: _____

ANFO Loader Example Base Models - Pressure

minsup

Standard with Shouldered Head



Squat with Shouldered Head



Standard with Flanged Head



Squat with Flanged Head



Flanged head allows servicing of internal sealing cone.

All vessels come with 2" shouldered outlet.
Height and Diameter dimension given includes frame and filler cone.

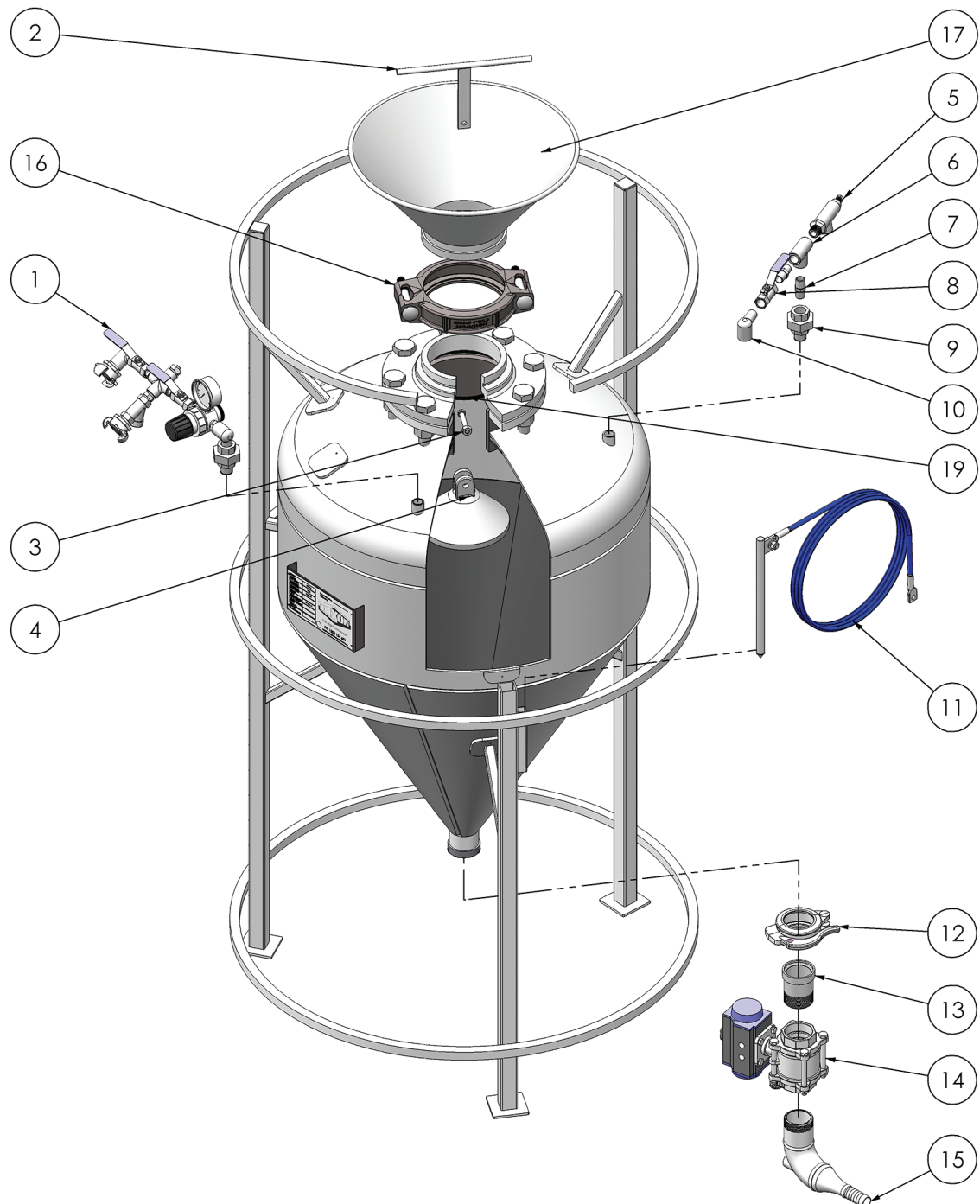
For pressure vessels in other sizes or configurations contact your nearest Dixon™ representative.

All 500kg pressure vessels come with a square frame - all others have a round frame (cylindrical).

Size (kg)	Shouldered Head		Flanged Head	
	Diameter (mm)	H (mm)	Diameter (mm)	H (mm)
Standard				
45kg	700	1440	-	-
100kg	880	1760	-	-
200kg	960	1805	960	1805
250kg	960	1955	960	1955
Squat				
250kg	1217	1720	1217	1720
500kg	1267	2160	1267	2160

ANFO Loader Spare Parts

minsop



Exploded View - Flanged Configuration with Remote Take-Off

Product specification may be subject to change without prior notification.

ANFO Loaders - Purchasers Responsibilities

Dixon Asia Pacific Pty Ltd manufactures pressure vessels, namely Anfo Loaders to AS1210 - 1989 - Class 3.

To comply with AS1210 SAA Unfired Pressure Vessels Code, the vessel must not be used for the transport of material under pressure.

Purchasers of anfo loaders are supplied with a copy of the Manufacturers Data Report - Pressure Vessel at point of delivery.

Purchasers are advised that the Anfo Loader (Pressure Vessel) manufactured under AS1200 is subject to Occupational Health, Safety and Welfare Regulations, 1995 (page 5 section 3.2.24(1)(a)). An employer must ensure that pressure equipment, other than a gas cylinder that is covered by AS1200 SAA Boiler Code and that is in USE, is inspected or tested in accordance with AS3788.

Purchasers should refer to Australian Standards AS3788 - Pressure Equipment In-Service Inspection, Section 3: Inspection Personnel and Administration; Section 4: Pressure Equipment Inspection.

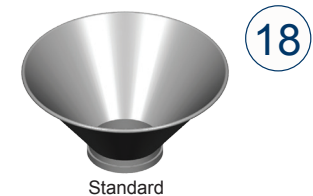
ANFO Loader Spare Parts

minsup

Preset to 690 kPa
Fitted with Anti-Tamper Seal



c/w Trash Screen & Lid



Standard



Ref No.	DIXON PART NO.	DESCRIPTION	UOM	PACK QTY
1	08/040/01/082R	MANIFOLD ASSEMBLY TO SUIT REMOTE OPERATION	EACH	1
1	08/040/01/082	MANIFOLD ASSEMBLY TO SUIT MANUAL OPERATION	EACH	1
2	08/040/01/003	HANDLE	EACH	1
3	05/040/01/010	BOLT 3/8" X 2 1/2" BSW	EACH	1
3	05/062/100/080	NUT 3/8" BSW	EACH	1
4	08/040/06/005	SEALING CONE 6"	EACH	1
5	05/040/01/012SS	RELIEF VALVE 1/2" S/S SET TO 690 KPA	EACH	1
6	SS16T015	TEE 1/2" BSP S/S FEMALE	EACH	1
7	SS16HN015	NIPPLE 1/2" BSP S/S	EACH	1
8	SS1P012	1/2" 1 PIECE S/S BALL VALVE	EACH	1
9	SS16FU015	UNION 1/2" BSP F/F S/S	EACH	1
10	SS16ELMF015	ELBOW 1/2" BSP M/F S/S	EACH	1
11	08/040/01/081	EARTH LEAD ASSEMBLY	EACH	1
12	08/048/19/000G	CLAMP 2" Q/R SHOULDERED	EACH	1
13	08/048/10/000B	2" SHOULDERED X BSP ADAPTOR	EACH	1
14	SS3P050-ACT-DA	2" 3 PIECE S/S BALL VALVE WITH PNEUMATIC ACTUATOR	EACH	1
15	08/040/01/058C	TAKE-OFF BEND ASSEMBLY	EACH	1
16	08/048/20/005	CLAMP 6" SHOULDERED	EACH	1
17	08/040/06/002	FILLER CONE ASSEMBLY	EACH	1
18	08/040/06/402	FILLER CONE ASSEMBLY C/W TRASH SCREEN & LID	EACH	1
19	05/006/08/000	O-RING	EACH	1

DIXON PART NO.	DESCRIPTION	UOM	PACK QTY
05/040/01/015SS	GAUGE PRESSURE 1/4" S/S	EACH	1

DIXON PART NO.	DESCRIPTION	UOM	PACK QTY
05/040/01/014SS	REGULATOR 1/2" S/S 0 - 1000 KPA	EACH	1

DIXON PART NO.	DESCRIPTION	UOM	PACK QTY
SYS-015	STRAINER Y 1/2" BSP	EACH	1

Minsup™ Remote Control Sub Assemblies Spare Parts



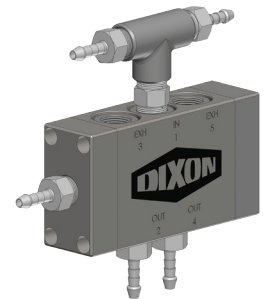
DIXON PART NO.	DESCRIPTION	UOM	PACK QTY
SS3P050-ACT-DA	2" 3 PIECE S/S BALL VALVE WITH PNEUMATIC ACTUATOR	EACH	1
08/048/10/000B	2" SHOULDERED X BSP ADAPTOR (TO JOIN THE BALL VALVE TO THE VESSEL)	EACH	1



08/048/10/000B

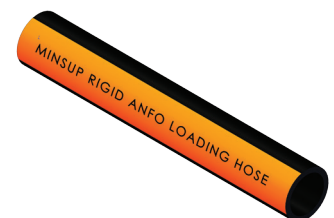
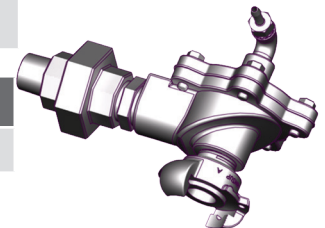
Feature: Stainless steel pilot valve minimises chance of forming tetra-ammine copper nitrate.

DIXON PART NO.	DESCRIPTION	UOM	PACK QTY
08/040/08/087	PILOT VALVE ASSEMBLY	EACH	1



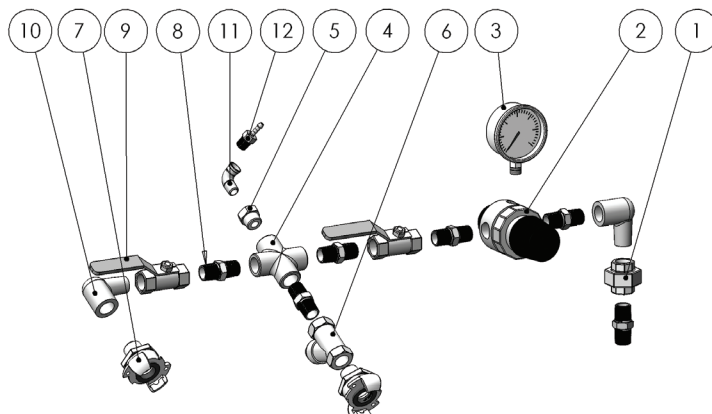
Feature: Diaphragm valve controls air to the venturi inlet.

DIXON PART NO.	DESCRIPTION	UOM	PACK QTY
08/040/08/089	DIAPHRAGM VALVE ASSEMBLY	EACH	1

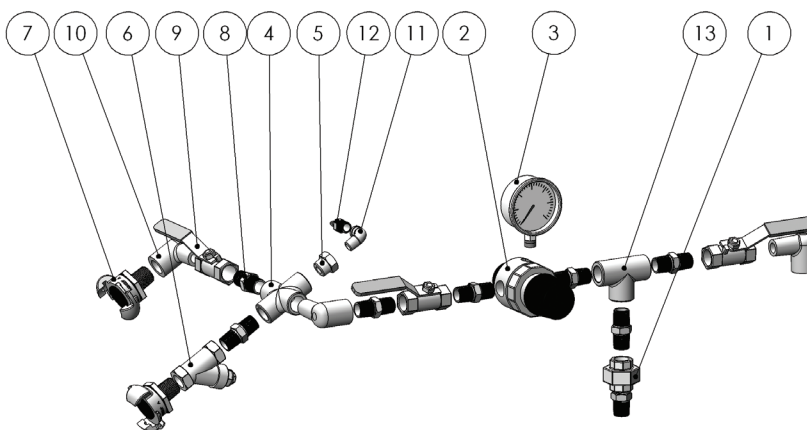


For Anfo Tube refer to page 26.

ANFO Loader Spare Parts Sub Assemblies



100Kg, 200Kg, 250Kg AND 500Kg CONFIGURATIONS (REMOTE CONTROL VERSION)



45Kg CONFIGURATION (REMOTE CONTROL VERSION)

MANIFOLD ASSEMBLY

Minsup™ manifold assemblies are constructed from Stainless Steel components ideally suitable in preventing the formation of tetra-ammine copper nitrate (TACN)

DIXON PART NO.	DESCRIPTION	UOM	PACK QTY
08/040/01/082R	Manifold Assembly to suit remote op.	EACH	1
08/040/01/082	Manifold Assembly. to suit manual op.	EACH	1

Ref No.	DIXON PART NO.	DESCRIPTION	UOM	PACK QTY
1	SS16UMF015	Union ½" BSP M/F S/S	EACH	1
2	05/040/01/014SS	Regulator ½" BSP S/S	EACH	1
3	05/040/01/015SS	Gauge ¼" BSP 0-1000 PSI	EACH	1
4	SS16CR015	Cross " BSP S/S	EACH	1
5	SS16B1508	Red. Bush ½" x ¼" BSP S/S	EACH	1
6	08/001/09/000	½" 'A' Type Male BSP	EACH	1
7	SYS-015	Strainer ½" BSP S/S	EACH	1
8	SS16HN015	Nipple ½" BSP S/S	EACH	1
9	SS1P012	15mm 1 Piece S/S Ball Valve	EACH	1
10	SS16ELMF015	Elbow ½" BSP M/F S/S	EACH	1
11 ¹	SS16ELMF008	Elbow ¼" BSP M/F S/S	EACH	1
12 ¹	08/040/08/082SS	Tail Hose 3/16" x ¼" BSP S/S	EACH	1
13	SS16T015	Tee ½" BSP S/S	EACH	1
2	SS16XP008	Hex Plug ¼" BSP S/S	EACH	1

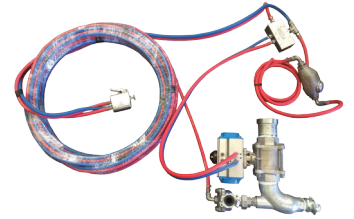
¹ used in 08/040/01/082R only

² used in 08/040/01/082 only in replacement of 11 & 12

ANFO Loader Single Remote Control Kit

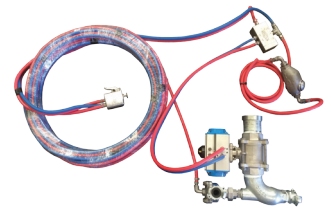
Components:	<ul style="list-style-type: none"> Control Valve Single MkII Lubricator Assembly Pilot Valve Assembly Actuated Valve Assembly Control Hoses (10m)
--------------------	--

DIXON PART NO.	DESCRIPTION	UOM	PACK QTY
08/040/08/128	2" SHOULDERED OUTLET	EACH	1



Components:	<ul style="list-style-type: none"> Control Valve Dual MkII Lubricator Assembly Pilot Valve Assembly Actuated Valve Assembly Diaphragm Valve Control Hoses (10m)
--------------------	---

DIXON PART NO.	DESCRIPTION	UOM	PACK QTY
08/040/08/129	2" SHOULDERED OUTLET	EACH	1



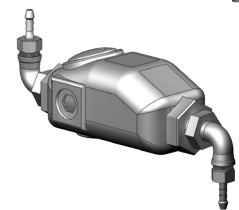
Application:	For the operation of Minsup™ Anfo Loaders equipped to be fitted with single or dual control valve. Single Control Valve. Used to operate actuated loading valve. Dual Control Valve. Used to operate actuated loading valve and diaphragm operated venturi.
Material:	Stainless steel with nitrile O ring and steel spring.
Temperature:	80°C
Features:	Operator comfort, single hand operation. Suitable for contact with ANFO.

DIXON PART NO.	DESCRIPTION	UOM	PACK QTY
SRC	SINGLE CONTROL VALVE	EACH	1
DRC	DUAL CONTROL VALVE	EACH	1

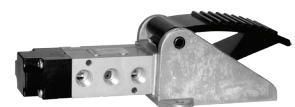


Investment cast aluminium oil lubricator assembly provides lubrication to all moving parts.

DIXON PART NO.	DESCRIPTION	UOM	PACK QTY
08/040/08/127	OIL LUBRICATOR ASSEMBLY	EACH	1



DIXON PART NO.	DESCRIPTION	UOM	PACK QTY
05/040/08/134AL	ALUMINIUM FOOT CONTROL VALVE	EACH	1
B53004GY	FOOT CONTROL VALVE - DUAL SPRING CONTROL	EACH	1



Aluminum



Dual Spring Control

Scraper Blocks *minsup*



DIXON PART NO.	DESCRIPTION	UOM	PACK QTY
08/050/01X/00	BLOCK SCRAPER COMPLETE 50/01X	EACH	1

Scaling Bars - Hex Steel



DIXON PART NO.	DESCRIPTION	UOM	PACK QTY
05/100/02/295	3/4" (19MM) HEX X 4' (1200MM)	EACH	1
05/100/01/112	3/4" (19MM) HEX X 5' (1500MM)	EACH	1
05/100/01/113	3/4" (19MM) HEX X 6' (1800MM)	EACH	1
05/100/01/111	3/4" (19MM) HEX X 7' (2100MM)	EACH	1

Scaling Bars - Hex Steel



DIXON PART NO.	DESCRIPTION	UOM	PACK QTY
SBAR22MMX1200F	7/8" (22MM) X 4' (1200MM) HEX C/W 2 X RUBBER HAND GRIPS	EACH	1
SBAR22MMX1500F	7/8" (22MM) X 5' (1500MM) HEX C/W 2 X RUBBER HAND GRIPS	EACH	1
SBAR22MMX1800F	7/8" (22MM) X 6' (1800MM) HEX C/W 2 X RUBBER HAND GRIPS	EACH	1
SBAR22MMX2100F	7/8" (22MM) X 7' (2100MM) HEX C/W 2 X RUBBER HAND GRIPS	EACH	1

Scaling Bars - Aluminium



DIXON PART NO.	DESCRIPTION	UOM	PACK QTY
08/100/01/066	6' ALUMINIUM SCALING BAR	EACH	1
08/100/01/861	8' ALUMINIUM SCALING BAR	EACH	1
08/100/01/279	10' ALUMINIUM SCALING BAR	EACH	1

Oil Lubricators *minsup*



DIXON PART NO.	DESCRIPTION	UOM	PACK QTY
08/066/01/000	LUBRICATOR OIL BOTTLE 1.2L FIXED 66/01	EACH	3
08/066/02/000	LUBRICATOR OIL BOTTLE 1.2L ADJUST 66/02	EACH	3

Pelican Picks *minsup*



DIXON PART NO.	DESCRIPTION	UOM	PACK QTY
08/080/01/000	PICK PELICAN COMPLETE 80/01/00	EACH	8

DIXON PART NO.	DESCRIPTION	UOM	PACK QTY
FN600	FUEL NOZZLE, DOG LATCH MECHANISM WITH SWIVEL & PLUG	EACH	1
FN600BL	FUEL NOZZLE, BALL LOCK MECHANISM WITH SWIVEL & PLUG	EACH	1

FloMax Diesel Nozzle



DIXON PART NO.	DESCRIPTION	UOM	PACK QTY
FRA-C	FUEL RECEIVER - STEEL, WITH CAP	EACH	1
FRS-C	FUEL RECEIVER - ALUMINIUM, WITH CAP	EACH	1

FloMax Diesel Fuel Receivers



DIXON PART NO.	DESCRIPTION	UOM	PACK QTY
ENBL-P	ENGINE OIL, NOZZLE WITH PLUG - RED	EACH	1
ERS-C	ENGINE OIL, RECEIVER WITH CAP - RED	EACH	1

FloMax Standard Series Engine Oil (Red)



DIXON PART NO.	DESCRIPTION	UOM	PACK QTY
HN-P	HYDRAULIC OIL, NOZZLE WITH PLUG - GOLD	EACH	1
HR-C	HYDRAULIC OIL, RECEIVER WITH CAP - GOLD	EACH	1

FloMax Standard Series Hydraulic Oil (Gold)



DIXON PART NO.	DESCRIPTION	UOM	PACK QTY
CN-P	COOLANT FLUID, NOZZLE WITH PLUG - GOLD	EACH	1
CR-C	COOLANT FLUID, RECEIVER WITH CAP - GOLD	EACH	1

FloMax Standard Series Coolant Fluid (Teal)

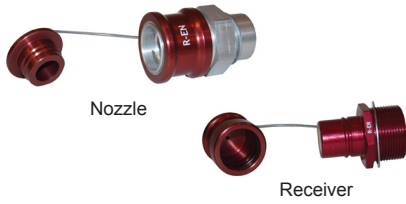


DIXON PART NO.	DESCRIPTION	UOM	PACK QTY
TN-P	TRANSMISSION FLUID, RECEIVER WITH PLUG - VIOLET	EACH	1
TR-C	TRANSMISSION FLUID, RECEIVER WITH CAP - VIOLET	EACH	1

FloMax Standard Series Transmission Fluid (Violet)

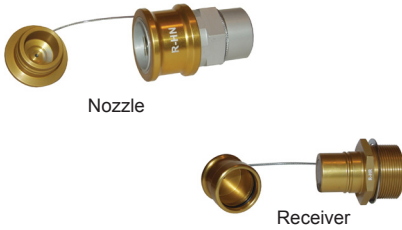


FloMax R Series Engine Oil (Red)



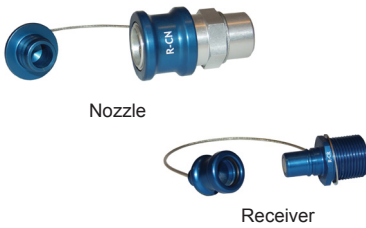
DIXON PART NO.	DESCRIPTION	UOM	PACK QTY
R-EN-P	ENGINE OIL, NOZZLE WITH PLUG - RED	EACH	1
R-ER-C	ENGINE OIL, RECEIVER WITH CAP - RED	EACH	1

FloMax R Series Hydraulic Oil (Gold)



DIXON PART NO.	DESCRIPTION	UOM	PACK QTY
R-HN-P	R SERIES HYDRAULIC OIL, NOZZLE WITH PLUG - GOLD	EACH	1
R-HR-C	R SERIES HYDRAULIC OIL, NOZZLE WITH CAP - GOLD	EACH	1

FloMax R Series Coolant Fluid (Teal)



DIXON PART NO.	DESCRIPTION	UOM	PACK QTY
R-CN-P	R SERIES COOLANT FLUID, NOZZLE WITH PLUG - TEAL	EACH	1
R-CR-C	R SERIES COOLANT FLUID, NOZZLE WITH CAP - TEAL	EACH	1

FloMax R Series Transmission Fluid (Violet)



DIXON PART NO.	DESCRIPTION	UOM	PACK QTY
R-TN-P	R SERIES TRANSMISSION FLUID, RECEIVER WITH PLUG - VIOLET	EACH	1
R-TR-C	R SERIES TRANSMISSION FLUID, RECEIVER WITH CAP - VIOLET	EACH	1

DIXON PART NO.	DESCRIPTION	UOM	PACK QTY
EXT-ABE-1KG	1KG ABE POWDER FIRE EXTINGUISHER	EACH	1
EXT-ABE-4.5KG	4.5KG ABE POWDER FIRE EXTINGUISHER	EACH	1
EXT-ABE-9KG	9KG ABE POWDER FIRE EXTINGUISHER	EACH	1

Fire Extinguisher ABE Powder



DIXON PART NO.	DESCRIPTION	UOM	PACK QTY
EXT-AF-9LTR	9LTR FOAM FIRE EXTINGUISHER	EACH	1

Fire Extinguisher Foam



DIXON PART NO.	DESCRIPTION	UOM	PACK QTY
EXT-CO2-3.5KG	3.5KG CO2 FIRE EXTINGUISHER	EACH	1
EXT-CO2-5KG	5KG CO2 FIRE EXTINGUISHER	EACH	1

Fire Extinguisher CO²



DIXON PART NO.	DESCRIPTION	UOM	PACK QTY
HDVB4.5	HEAVY DUTY VEHICLE BRACKET FOR 4.5KG EXT	EACH	1
HDVB9.0	HEAVY DUTY VEHICLE BRACKET FOR 9KG EXT	EACH	1

Heavy Duty Vehicle Bracket



DIXON PART NO.	DESCRIPTION	UOM	PACK QTY
EXT-CHDPRCE	PVC EXTINGUISHER BAG	EACH	1

Fire Extinguisher Bag



DIXON PART NO.	DESCRIPTION	UOM	PACK QTY
FFS-HR-36B	FIRE HOSE REEL 36M STANDARD FIXED	EACH	

Fire Hose Reel



BSP Sockets



DIXON PART NO.	DESCRIPTION	UOM	PACK QTY
PTF-SOC-15	SOCKET PLASSON 5017 15MM	EACH	1
PTF-SOC-20	SOCKET PLASSON 5017 20MM	EACH	1
PTF-SOC-25	SOCKET PLASSON 5017 25MM	EACH	1
PTF-SOC-32	SOCKET PLASSON 5017 32MM	EACH	1
PTF-SOC-40	SOCKET PLASSON 5017 40MM	EACH	1
PTF-SOC-50	SOCKET PLASSON 5017 50MM	EACH	1

BSP Tee's



DIXON PART NO.	DESCRIPTION	UOM	PACK QTY
PTF-TEE-15	TEE PLASSON 5047 15MM	EACH	1
PTF-TEE-20	TEE PLASSON 5047 20MM	EACH	1
PTF-TEE-25	TEE PLASSON 5047 25MM	EACH	1
PTF-TEE-40	TEE PLASSON 5047 40MM	EACH	1
PTF-TEE-50	TEE PLASSON 5047 50MM	EACH	1

BSP Elbows



DIXON PART NO.	DESCRIPTION	UOM	PACK QTY
PTF-EFF-15	ELBOW PLASSON 5057 15MM	EACH	1
PTF-EFF-20	ELBOW PLASSON 5057 20MM	EACH	1
PTF-EFF-25	ELBOW PLASSON 5057 25MM	EACH	1
PTF-EFF-32	ELBOW PLASSON 5057 32MM	EACH	1
PTF-EFF-40	ELBOW PLASSON 5057 40MM	EACH	1
PTF-EFF-50	ELBOW PLASSON 5057 50MM	EACH	1

BSP Nipples



DIXON PART NO.	DESCRIPTION	UOM	PACK QTY
PTF-HN-15	NIPPLE PLASSON 5067 15MM	EACH	1
PTF-HN-20	NIPPLE PLASSON 5067 20MM	EACH	1
PTF-HN-25	NIPPLE PLASSON 5067 25MM	EACH	1
PTF-HN-32	NIPPLE PLASSON 5067 32MM	EACH	1
PTF-HN-40	NIPPLE PLASSON 5067 40MM	EACH	1
PTF-HN-50	NIPPLE PLASSON 5067 50MM	EACH	1
PTF-HN-20-15	NIPPLE PLASSON 5065 20X15MM	EACH	1
PTF-HN-25-15	NIPPLE PLASSON 5065 25X15MM	EACH	1
PTF-HN-25-20	NIPPLE PLASSON 5065 25X20MM	EACH	1
PTF-HN-50-25	NIPPLE PLASSON 5065 50X25MM	EACH	1

BSP End Caps



DIXON PART NO.	DESCRIPTION	UOM	PACK QTY
PTF-CAP-20	CAP PLASSON 5077 20MM	EACH	1
PTF-CAP-25	CAP PLASSON 5077 25MM	EACH	1
PTF-CAP-32	CAP PLASSON 5077 32MM	EACH	1
PTF-CAP-40	CAP PLASSON 5077 40MM	EACH	1
PTF-CAP-50	CAP PLASSON 5077 50MM	EACH	1

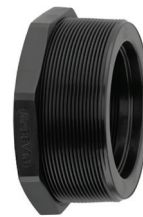
DIXON PART NO.	DESCRIPTION	UOM	PACK QTY
PTF-HP-15	PLUG PLASSON 5177 15MM	EACH	1
PTF-HP-20	PLUG PLASSON 5177 20MM	EACH	1
PTF-HP-25	PLUG PLASSON 5177 25MM	EACH	1
PTF-HP-32	PLUG PLASSON 5177 32MM	EACH	1
PTF-HP-40	PLUG PLASSON 5177 40MM	EACH	1
PTF-HP-50	PLUG PLASSON 5177 50MM	EACH	1

BSP End Plugs



DIXON PART NO.	DESCRIPTION	UOM	PACK QTY
PTF-BUSH-20-15	BUSH PLASSON 5027 20X15MM	EACH	1
PTF-BUSH-25-15	BUSH PLASSON 5027 25X15MM	EACH	1
PTF-BUSH-25-20	BUSH PLASSON 5027 25X20MM	EACH	1
PTF-BUSH-32-20	BUSH PLASSON 5027 32X20MM	EACH	1
PTF-BUSH-32-25	BUSH PLASSON 5027 32X25MM	EACH	1
PTF-BUSH-40-20	BUSH PLASSON 5027 40X20MM	EACH	1
PTF-BUSH-40-25	BUSH PLASSON 5027 40X25MM	EACH	1
PTF-BUSH-40-32	BUSH PLASSON 5027 40X32MM	EACH	1
PTF-BUSH-50-20	BUSH PLASSON 5027 50X20MM	EACH	1
PTF-BUSH-50-25	BUSH PLASSON 5027 50X25MM	EACH	1
PTF-BUSH-50-32	BUSH PLASSON 5027 50X32MM	EACH	1
PTF-BUSH-50-40	BUSH PLASSON 5027 50X40MM	EACH	1
PTF-BUSH-65-50	BUSH PLASSON 5027 65X50MM	EACH	1
PTF-BUSH-80-50	BUSH PLASSON 5027 80X50MM	EACH	1
PTF-BUSH-100-80	BUSH PLASSON 5027 100X80MM	EACH	1

BSP Reducing Bushes



DIXON PART NO.	DESCRIPTION	UOM	PACK QTY
PCF-COUP-25	COUPLING PLASSON 7010 25MM	EACH	1
PCF-COUP-40	COUPLING PLASSON 7010 40MM	EACH	1
PCF-COUP-50	COUPLING PLASSON 7010 50MM	EACH	1
PCF-COUP-63	COUPLING PLASSON 7010 63MM	EACH	1
PCF-COUP-75	COUPLING PLASSON 7010 75MM	EACH	1
PCF-COUP-90	COUPLING PLASSON 7010 90MM	EACH	1
PCF-COUP-110	COUPLING PLASSON 7010 110MM	EACH	1

Couplings



Poly Reducing Couplings



DIXON PART NO.	DESCRIPTION	UOM	PACK QTY
PCF-COUP-25-16	COUPLING REDUCING PLASSON 7110 25X16MM	EACH	1
PCF-COUP-25-20	COUPLING REDUCING PLASSON 7110 25X20MM	EACH	1
PCF-COUP-32-20	COUPLING REDUCING PLASSON 7110 32X20MM	EACH	1
PCF-COUP-32-25	COUPLING REDUCING PLASSON 7110 32X25MM	EACH	1
PCF-COUP-40-25	COUPLING REDUCING PLASSON 7110 40X25MM	EACH	1
PCF-COUP-40-32	COUPLING REDUCING PLASSON 7110 40X32MM	EACH	1
PCF-COUP-50-25	COUPLING REDUCING PLASSON 7110 50X25MM	EACH	1
PCF-COUP-50-32	COUPLING REDUCING PLASSON 7110 50X32MM	EACH	1
PCF-COUP-50-40	COUPLING REDUCING PLASSON 7110 50X40MM	EACH	1
PCF-COUP-63-25	COUPLING REDUCING PLASSON 7110 62X25MM	EACH	1
PCF-COUP-63-32	COUPLING REDUCING PLASSON 7110 63X32MM	EACH	1
PCF-COUP-63-40	COUPLING REDUCING PLASSON 7110 63X40MM	EACH	1
PCF-COUP-63-50	COUPLING REDUCING PLASSON 7110 63X50MM	EACH	1
PCF-COUP-75-50	COUPLING REDUCING PLASSON 7110 75X50MM	EACH	1
PCF-COUP-75-63	COUPLING REDUCING PLASSON 7110 75X63MM	EACH	1
PCF-COUP-90-63	COUPLING REDUCING PLASSON 7110 90X63MM	EACH	1
PCF-COUP-90-75	COUPLING REDUCING PLASSON 7110 90X75MM	EACH	1
PCF-COUP-110-90	COUPLING REDUCING PLASSON 7110 110X90MM	EACH	1

Poly x Poly x Poly Tee's



DIXON PART NO.	DESCRIPTION	UOM	PACK QTY
PCF-TEE-25	TEE PLASSON 7040 25MM	EACH	1
PCF-TEE-32	TEE PLASSON 7040 32MM	EACH	1
PCF-TEE-40	TEE PLASSON 7040 40MM	EACH	1
PCF-TEE-50	TEE PLASSON 7040 50MM	EACH	1
PCF-TEE-63	TEE PLASSON 7040 63MM	EACH	1
PCF-TEE-75	TEE PLASSON 7040 75MM	EACH	1
PCF-TEE-90	TEE PLASSON 7040 90MM	EACH	1
PCF-TEE-110	TEE PLASSON 7040 110MM	EACH	1

Poly x Male BSP x Poly Tee's



DIXON PART NO.	DESCRIPTION	UOM	PACK QTY
PCF-TEE-20-20M	TEE MALE OFFTAKE 7840 20X20X20MM	EACH	1
PCF-TEE-25-15M	TEE MALE OFFTAKE 7840 25X15X25MM	EACH	1
PCF-TEE-25-20M	TEE MALE OFFTAKE 7840 25X20X25MM	EACH	1
PCF-TEE-32-25M	TEE MALE OFFTAKE 7840 32X25X32MM	EACH	1
PCF-TEE-40-40M	TEE MALE OFFTAKE 7840 40X40X40MM	EACH	1
PCF-TEE-50-40M	TEE MALE OFFTAKE 7840 50X40X50MM	EACH	1
PCF-TEE-63-50M	TEE MALE OFFTAKE 7840 63X50X63MM	EACH	1

DIXON PART NO.	DESCRIPTION	UOM	PACK QTY
PCF-TEE-16-15F	TEE FEMALE OFFTAKE 7140 16X15X16MM	EACH	1
PCF-TEE-16-20F	TEE FEMALE OFFTAKE 7140 16X20X16MM	EACH	1
PCF-TEE-20-20F	TEE FEMALE OFFTAKE 7140 20X20X20MM	EACH	1
PCF-TEE-25-20F	TEE FEMALE OFFTAKE 7140 25X20X25MM	EACH	1
PCF-TEE-25-25F	TEE FEMALE OFFTAKE 7140 25X25X25MM	EACH	1
PCF-TEE-32-20F	TEE FEMALE OFFTAKE 7140 32X20X32MM	EACH	1
PCF-TEE-32-25F	TEE FEMALE OFFTAKE 7140 32X25X32MM	EACH	1
PCF-TEE-32-32F	TEE FEMALE OFFTAKE 7140 32X32X32MM	EACH	1
PCF-TEE-40-25F	TEE FEMALE OFFTAKE 7140 40X25X40MM	EACH	1
PCF-TEE-40-32F	TEE FEMALE OFFTAKE 7140 40X32X40MM	EACH	1
PCF-TEE-40-40F	TEE FEMALE OFFTAKE 7140 40X40X40MM	EACH	1
PCF-TEE-50-40F	TEE FEMALE OFFTAKE 7140 50X40X50MM	EACH	1
PCF-TEE-50-50F	TEE FEMALE OFFTAKE 7140 50X50X50MM	EACH	1
PCF-TEE-63-50F	TEE FEMALE OFFTAKE 7140 63X50X63MM	EACH	1
PCF-TEE-75-50F	TEE FEMALE OFFTAKE 7140 75X50X75MM	EACH	1
PCF-TEE-90-75F	TEE FEMALE OFFTAKE 7140 90X75X90MM	EACH	1

Poly x Female BSP x Poly Tee's



DIXON PART NO.	DESCRIPTION	UOM	PACK QTY
PCF-TEE-110-63	TEE REDUCING POLY 110 - 110 - 63MM	EACH	1
PCF-TEE-32-25	TEE REDUCING PLASSON 7340 32X25X32MM	EACH	1
PCF-TEE-40-25	TEE REDUCING PLASSON 7340 40X25X40MM	EACH	1
PCF-TEE-63-50	TEE REDUCING PLASSON 7340 63X50X63MM	EACH	1
PCF-TEE-75-63	TEE REDUCING PLASSON 7340 75X63X75MM	EACH	1

Reducing Tee's



DIXON PART NO.	DESCRIPTION	UOM	PACK QTY
PCF-ELB90-16	ELBOW 90 PLASSON 7050 16MM	EACH	1
PCF-ELB90-20	ELBOW 90 PLASSON 7050 20MM	EACH	1
PCF-ELB90-25	ELBOW 90 PLASSON 7050 25MM	EACH	1
PCF-ELB90-32	ELBOW 90 PLASSON 7050 32MM	EACH	1
PCF-ELB90-40	ELBOW 90 PLASSON 7050 40MM	EACH	1
PCF-ELB90-50	ELBOW 90 PLASSON 7050 50MM	EACH	1
PCF-ELB90-63	ELBOW 90 PLASSON 7050 63MM	EACH	1
PCF-ELB90-75	ELBOW 90 PLASSON 7050 75MM	EACH	1
PCF-ELB90-90	ELBOW 90 PLASSON 7050 90MM	EACH	1
PCF-ELB90-110	ELBOW 90 PLASSON 7050 110MM	EACH	1

Poly x Poly Elbows



Female BSP x Poly Elbows



DIXON PART NO.	DESCRIPTION	UOM	PACK QTY
PCF-ELB-20-20F	ELBOW FEMALE OFFTAKE 7150 20X20MM	EACH	1
PCF-ELB-25-20F	ELBOW FEMALE OFFTAKE 7150 25X20MM	EACH	1
PCF-ELB-25-25F	ELBOW FEMALE OFFTAKE 7150 25X25MM	EACH	1
PCF-ELB-32-25F	ELBOW FEMALE OFFTAKE 7150 32X25MM	EACH	1
PCF-ELB-32-32F	ELBOW FEMALE OFFTAKE 7150 32X32MM	EACH	1
PCF-ELB-40-32F	ELBOW FEMALE OFFTAKE 7150 40X32MM	EACH	1
PCF-ELB-40-40F	ELBOW FEMALE OFFTAKE 7150 40X40MM	EACH	1
PCF-ELB-50-40F	ELBOW FEMALE OFFTAKE 7150 50X40MM	EACH	1
PCF-ELB-50-50F	ELBOW FEMALE OFFTAKE 7150 50X50MM	EACH	1
PCF-ELB-63-50F	ELBOW FEMALE OFFTAKE 7150 63X50MM	EACH	1
PCF-ELB-75-50F	ELBOW FEMALE OFFTAKE 7150 75X50MM	EACH	1

Poly x Male BSP Elbows



DIXON PART NO.	DESCRIPTION	UOM	PACK QTY
PCF-ELB-20-20M	ELBOW MALE OFFTAKE 7850 20X20MM	EACH	1
PCF-ELB-25-20M	ELBOW MALE OFFTAKE 7850 25X20MM	EACH	1
PCF-ELB-25-25M	ELBOW MALE OFFTAKE 7850 25X25MM	EACH	1
PCF-ELB-32-25M	ELBOW MALE OFFTAKE 7850 32X25MM	EACH	1
PCF-ELB-40-40M	ELBOW MALE OFFTAKE 7850 40X40MM	EACH	1
PCF-ELB-50-40M	ELBOW MALE OFFTAKE 7850 50X40MM	EACH	1
PCF-ELB-63-50M	ELBOW MALE OFFTAKE 7850 63X50MM	EACH	1

45° Poly Elbow



DIXON PART NO.	DESCRIPTION	UOM	PACK QTY
PCF-ELB45-32	ELBOW 45DEG 7460 32MM	EACH	1
PCF-ELB45-50	ELBOW 45DEG 7460 50MM	EACH	1
PCF-ELB45-63	ELBOW 45DEG 7460 63MM	EACH	1
PCF-ELB45-110	ELBOW 45DEG 7460 110MM	EACH	1

End Plugs



DIXON PART NO.	DESCRIPTION	UOM	PACK QTY
PCF-PLUG-25	END PLUG PLASSON 7120 25MM	EACH	1
PCF-PLUG-32	END PLUG PLASSON 7120 32MM	EACH	1
PCF-PLUG-40	END PLUG PLASSON 7120 40MM	EACH	1
PCF-PLUG-50	END PLUG PLASSON 7120 50MM	EACH	1
PCF-PLUG-63	END PLUG PLASSON 7120 63MM	EACH	1
PCF-PLUG-75	END PLUG PLASSON 7120 75MM	EACH	1
PCF-PLUG-90	END PLUG PLASSON 7120 90MM	EACH	1

DIXON PART NO.	DESCRIPTION	UOM	PACK QTY
PCF-AM-20-15	ADAPTOR MALE PLASSON 7020 20X15MM	EACH	1
PCF-AM-20-20	ADAPTOR MALE PLASSON 7020 20X20MM	EACH	1
PCF-AM-20-25	ADAPTOR MALE PLASSON 7020 20X25MM	EACH	1
PCF-AM-25-15	ADAPTOR MALE PLASSON 7020 25X15MM	EACH	1
PCF-AM-25-20	ADAPTOR MALE PLASSON 7020 25X20MM	EACH	1
PCF-AM-25-25	ADAPTOR MALE PLASSON 7020 25X25MM	EACH	1
PCF-AM-32-25	ADAPTOR MALE PLASSON 7020 32X25MM	EACH	1
PCF-AM-32-32	ADAPTOR MALE PLASSON 7020 32X32MM	EACH	1
PCF-AM-40-25	ADAPTOR MALE PLASSON 7020 40X25MM	EACH	1
PCF-AM-40-32	ADAPTOR MALE PLASSON 7020 40X32MM	EACH	1
PCF-AM-40-40	ADAPTOR MALE PLASSON 7020 40X40MM	EACH	1
PCF-AM-40-50	ADAPTOR MALE PLASSON 7020 40X50MM	EACH	1
PCF-AM-50-32	ADAPTOR MALE PLASSON 7020 50X32MM	EACH	1
PCF-AM-50-40	ADAPTOR MALE PLASSON 7020 50X40MM	EACH	1
PCF-AM-50-50	ADAPTOR MALE PLASSON 7020 50X50MM	EACH	1
PCF-AM-63-40	ADAPTOR MALE PLASSON 7020 63X40MM	EACH	1
PCF-AM-63-50	ADAPTOR MALE PLASSON 7020 63X50MM	EACH	1
PCF-AM-63-63	ADAPTOR MALE PLASSON 7020 63X63MM	EACH	1
PCF-AM-75-50	ADAPTOR MALE PLASSON 7020 75X50MM	EACH	1
PCF-AM-75-63	ADAPTOR MALE PLASSON 7020 75X63MM	EACH	1
PCF-AM-90-50	ADAPTOR MALE PLASSON 7020 90X50MM	EACH	1
PCF-AM-90-75	ADAPTOR MALE PLASSON 7020 90X75MM	EACH	1
PCF-AM-110-50	ADAPTOR MALE PLASSON 7020 110X50MM	EACH	1
PCF-AM-110-75	ADAPTOR MALE PLASSON 7020 110X75MM	EACH	1
PCF-AM-110-100	ADAPTOR MALE PLASSON 7020 110X100MM	EACH	1

BSP Male-Poly Adaptors

BSP Female Adaptors



DIXON PART NO.	DESCRIPTION	UOM	PACK QTY
PCF-AF-16-15	ADAPTOR FEMALE PLASSON 7030 16X15MM	EACH	1
PCF-AF-20-15	ADAPTOR FEMALE PLASSON 7030 20X15MM	EACH	1
PCF-AF-20-20	ADAPTOR FEMALE PLASSON 7030 20X20MM	EACH	1
PCF-AF-20-25	ADAPTOR FEMALE PLASSON 7030 20X25MM	EACH	1
PCF-AF-25-20	ADAPTOR FEMALE PLASSON 7030 25X20MM	EACH	1
PCF-AF-25-25	ADAPTOR FEMALE PLASSON 7030 25X25MM	EACH	1
PCF-AF-32-25	ADAPTOR FEMALE PLASSON 7030 32X25MM	EACH	1
PCF-AF-32-32	ADAPTOR FEMALE PLASSON 7030 32X32MM	EACH	1
PCF-AF-40-25	ADAPTOR FEMALE PLASSON 7030 40X25MM	EACH	1
PCF-AF-40-40	ADAPTOR FEMALE PLASSON 7030 40X40MM	EACH	1
PCF-AF-50-40	ADAPTOR FEMALE PLASSON 7030 50X40MM	EACH	1
PCF-AF-50-50	ADAPTOR FEMALE PLASSON 7030 50X50MM	EACH	1
PCF-AF-63-50	ADAPTOR FEMALE PLASSON 7030 63X50MM	EACH	1
PCF-AF-75-50	ADAPTOR FEMALE PLASSON 7030 75X50MM	EACH	1
PCF-AF-90-50	ADAPTOR FEMALE PLASSON 7030 90X50MM	EACH	1
PCF-AF-90-75	ADAPTOR FEMALE PLASSON 7030 90X75MM	EACH	1
PCF-AF-110-75	ADAPTOR FEMALE PLASSON 7030 110X75MM	EACH	1
PCF-AF-110-100	ADAPTOR FEMALE PLASSON 7030 110X100MM	EACH	1

Flanged x Poly Adaptors



DIXON PART NO.	DESCRIPTION	UOM	PACK QTY
PCF-AFL-50-50	ADAPTOR FLANGED WITH BUP 7220 50X50MM	EACH	1
PCF-AFL-50-63	ADAPTOR FLANGED WITH BUP 7220 50X63MM	EACH	1
PCF-AFL-63-63	ADAPTOR FLANGED WITH BUP 7220 63X63MM	EACH	1
PCF-AFL-75-75	ADAPTOR FLANGED WITH BUP 7220 75X75MM	EACH	1
PCF-AFL-90-100	ADAPTOR FLANGED WITH BUP 7220 90X100MM	EACH	1
PCF-AFL-110-100	ADAPTOR FLANGED WITH BUP 7220 110X100MM	EACH	1

Shouldered x Poly Adaptors



DIXON PART NO.	DESCRIPTION	UOM	PACK QTY
PCF-ASH-50-50	ADAPTOR SHOULDERED 7320 50X50MM	EACH	1
PCF-ASH-63-50	ADAPTOR SHOULDERED 7320 63X50MM	EACH	1
PCF-ASH-90-100	ADAPTOR SHOULDERED 7320 90X100MM	EACH	1
PCF-ASH-110-100	ADAPTOR SHOULDERED 7320 110X100MM	EACH	1

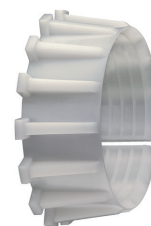


Shouldered x Poly Adaptors are recommended to be used with Dixon Minsup™ Shouldered Couplings. Refer to page 42

DIXON PART NO.	DESCRIPTION	UOM	PACK QTY
PCF-ORING-50	ORING NITRILE 7002 50MM	EACH	1
PCF-ORING-63	ORING NITRILE 7002 63MM	EACH	1
PCF-ORING-110	ORING NITRILE 7002 110MM	EACH	1

Plasson O-Rings

DIXON PART NO.	DESCRIPTION	UOM	PACK QTY
PCF-SPLIT-63	SPLIT RING ACETAL 7003 63MM	EACH	1
PCF-SPLIT-110	SPLIT RING ACETAL 7003 110MM	EACH	1

Plasson Split Rings

DIXON PART NO.	DESCRIPTION	UOM	PACK QTY
PCF-NUT-63	NUT PLASSON PP7004 63MM	EACH	1
PCF-NUT-110	NUT PLASSON PP7004 110MM	EACH	1

Plasson Nuts

DIXON PART NO.	DESCRIPTION	UOM	PACK QTY
PCF-INSERT-63	INSERT PP700563MM	EACH	1
PCF-INSERT-90	INSERT PP7005 90MM	EACH	1
PCF-INSERT-110	INSERT PP7005 110MM	EACH	1

Plasson Inserts

Reducing Sets



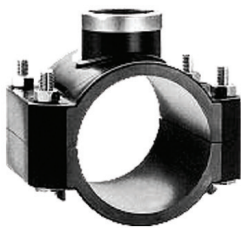
DIXON PART NO.	DESCRIPTION	UOM	PACK QTY
PCF-REDK-110-63	110-63 REDUCING SET 7930	EACH	1

Plasson Wrench's



DIXON PART NO.	DESCRIPTION	UOM	PACK QTY
PCF-SPAN-16-40	16-40 PLASSON WRENCH 7990	EACH	1
PCF-SPAN-40-75	40-75 PLASSON WRENCH 7990	EACH	1
PCF-SPAN-63-125	63-125 PLASSON WRENCH 7990	EACH	1

Tapping Saddles



DIXON PART NO.	DESCRIPTION	UOM	PACK QTY
PTF-SAD-32-15	SADDLE PLASSON 32X15MM	EACH	1
PTF-SAD-32-20	SADDLE PLASSON 32X20MM	EACH	1
PTF-SAD-40-20	SADDLE PLASSON 40X20MM	EACH	1
PTF-SAD-40-25	SADDLE PLASSON 40X25MM	EACH	1
PTF-SAD-50-20	SADDLE PLASSON 50X20MM	EACH	1
PTF-SAD-50-25	SADDLE PLASSON 50X25MM	EACH	1
PTF-SAD-63-25	SADDLE PLASSON 63X20MM	EACH	1
PTF-SAD-63-32	SADDLE PLASSON 63X32MM	EACH	1
PTF-SAD-63-40	SADDLE PLASSON 63X40MM	EACH	1
PTF-SAD-75-25	SADDLE PLASSON 75X25MM	EACH	1
PTF-SAD-75-50	SADDLE PLASSON 75X50MM	EACH	1
PTF-SAD-90-25	SADDLE PLASSON 90X25MM	EACH	1
PTF-SAD-90-50	SADDLE PLASSON 90X50MM	EACH	1
PTF-SAD-110-25	SADDLE PLASSON 110X25MM	EACH	1
PTF-SAD-110-50	SADDLE PLASSON 110X50MM	EACH	1

DIXON PART NO.	DESCRIPTION	UOM	PACK QTY
PAINT-MMH-RED	PAINT MINE MARK RED 350G FLY SPRAY	EACH	1
PAINT-MMH-BLU	PAINT MINE MARK BLUE FLY SPRAY	EACH	1
PAINT-MMH-YEL	PAINT MINE MARK YELLOW 350G FLY SPRAY	EACH	1
PAINT-MMH-WHI	PAINT MINE MARK WHITE 350G FLY SPRAY	EACH	1
PAINT-MMH-ORA	PAINT MINE MARK FLUORO ORANGE 350G FS	EACH	1
PAINT-MMH-FLPINK	PAINT MINE MARK FLUORO PINK 350G FS	EACH	1

Paint - Horizontal Mine Marking



DIXON PART NO.	DESCRIPTION	UOM	PACK QTY
PAINT-MMV-RED	PAINT MINE MARK RED 350G TRIGGER	EACH	1
PAINT-MMV-BLU	PAINT MINE MARK BLUE 350G BLUE TRIGGER	EACH	1
PAINT-MMV-YEL	PAINT MINE MARK YELLOW 350G TRIGGER	EACH	1
PAINT-MMV-WHI	PAINT MINE MARK WHITE 350G TRIGGER	EACH	1
PAINT-MMV-FLORA	PAINT MINE MARK FLUORO ORANGE 350G	EACH	1
PAINT-MMV-FLPINK	PAINT MINE MARK FLUORO PINK 350G	EACH	1

Paint - Vertical Mine Marking



DIXON PART NO.	DESCRIPTION	UOM	PACK QTY
PAINT-STICK	PAINT STICK 3 TO 5 MTS	EACH	1

Paint Stick



Rope



DIXON PART NO.	DESCRIPTION	UOM	PACK QTY
ROPE-GAL-6-1000	6MM GALV WIRE ROPE 7 X 7 1000MTR	MTR	1000m
ROPE-GAL-6-500	6MM GALV WIRE ROPE 7 X 7 500MTR	MTR	500m



DIXON PART NO.	DESCRIPTION	UOM	PACK QTY
ROPE-POLY-6-125	6MM POLY ROPE 125MTR ROLL	MTR	125m
ROPE-POLY-6-250	6MM POLY ROPE 250MTR ROLL	MTR	250m
ROPE-POLY-10-250	10MM POLY ROPE 250MTR ROLL	MTR	250m
ROPE-POLU-12-250	12MM POLY ROPE 250MTR ROLL	MTR	250m

D Shackles



DIXON PART NO.	DESCRIPTION	UOM	PACK QTY
SH-D-6	6MM GALV D SHACKLE	EACH	1
SH-D-8	8MM GALV D SHACKLE	EACH	1
SH-D-10	10MM GALV D SHACKLE	EACH	1
SH-D-16	16MM GALV D SHACKLE	EACH	1
SH-D-20	20MM GALV D SHACKLE	EACH	1

D Shackles



DIXON PART NO.	DESCRIPTION	UOM	PACK QTY
SH-BOW-22-4.7	19 X 22MM BOW SHACKLES 4.7T	EACH	1
SH-BOW-22	22MM BOW SHACKLE GALV 6.5T	EACH	1

Chain



DIXON PART NO.	DESCRIPTION	UOM	PACK QTY
CH-GAL-6-50	6MM GAL CHAIN, 50KG PACK	EACH	50kg

TERMS AND CONDITIONS OF SALE OF DIXON (ASIA) PACIFIC PTY LTD

1. INTERPRETATION

In these Conditions:

- 1.1 "Australian Consumer Law" means the law as set out in Schedule 2 of the Competition and Consumer Act 2010;
- 1.2 "Buyer" means the buyer specified in the attached Application for Credit Account or if there is no such application, or there is no buyer specified in the application, the purchaser of the Goods from the Company and includes any servants, agents, or contractors acting on behalf of the Buyer where the context permits;
- 1.3 "Company" means Dixon (Asia Pacific) Pty Ltd ACN 075 100 239 which is the seller of the Goods;
- 1.4 "Conditions" means these terms and conditions of sale;
- 1.5 "Consumer" means a "consumer" as that term is defined in Section 3 of the Australian Consumer Law;
- 1.6 "Consumer Contract" means a contract for supply of Goods by the Company to the Buyer as a Consumer;
- 1.7 "Consumer Guarantees" means the consumer guarantees under the Australian Consumer Law;
- 1.8 "Contract" means a contract for the sale and purchase of the Goods in accordance with these Conditions, as evidenced by the acceptance of any Order from the Buyer to the Company;
- 1.9 "Date of Acceptance" means the date that the Company approves the Application for Credit Account made by the Buyer or otherwise notifies the Buyer that these Conditions apply to the sale of Goods by the Company to the Buyer;
- 1.10 "Effective Date" means 1 January 2012;
- 1.11 "Goods" means the products purchased from the Company by the Buyer from time to time and which are the subject of an Order;
- 1.12 "Implied Terms" means any guarantees, conditions, warranties or other terms implied by any Australian Commonwealth, State or Territory laws (excluding the Australian Consumer Law), or the laws of any other jurisdiction;
- 1.13 "Order" means any Order for Goods from the Buyer to the Company from time to time in a form acceptable to the Company;
- 1.14 "PPSA" means the Personal Property Securities Act 2009;
- 1.15 "Quotation" means a quotation supplied by the Company to the Buyer in respect of the Goods.

2. GENERAL

- 2.1 These Conditions apply to all Goods supplied by the Company as from the Effective Date and the Buyer is deemed to have read and agreed to these Conditions prior to the placing of any Order.
- 2.2 These Conditions shall prevail over all inconsistencies in an Order and Quotation, unless the Company expressly agrees otherwise and that agreement is acknowledged in writing.
- 2.3 The Company reserves the right to vary, add or substitute to these Conditions from time to time and any such variations to these Conditions will have effect from the date of publication of such changes to the Company's customers.
- 2.4 No promise, representation, warranty or undertaking (including any technical advice or assistance provided by the Company to the Buyer in connection with the Buyer's Order for the Goods) other than that which is expressed in these Conditions will bind the Company, unless the Company expressly agrees otherwise in writing.

3. SHORTAGE AND NON-CONFORMING GOODS

The Buyer waives any claim for shortage of any Goods delivered or failure to supply Goods conforming with the Order if a claim for short delivery or failure to supply Goods conforming with the Order has not been lodged with the Company within seven (7) days from the date of receipt of Goods by the Buyer. Any claim for shortage of any Goods delivered or failure to supply Goods conforming with the Order must be submitted in writing in a form approved by the Company.

4. SPECIFICATIONS

Except where the Goods are purchased under a Consumer Contract:

- 4.1 All specifications, drawings, and particulars of weights and dimensions submitted or published by the Company are approximate only and any deviation from any of these things does not vitiate any contract with the Company or form grounds for any claim against the Company; and
- 4.2 The descriptions, illustrations and performances contained in catalogues, price lists and other advertising matter do not form part of the Contract or of the description applied to the Goods.

5. PERFORMANCE

Except where the Goods are purchased under a Consumer Contract, any performance figures given by the Company are estimates only. The Company is under no liability for damages for failure of the Goods to attain such figures unless specifically guaranteed in writing. Any such written guarantees are subject to the recognised tolerances applicable to such figures.

6. DELIVERY

- 6.1 The delivery times made known to the Buyer are estimates only and the Company is not liable for late delivery or non-delivery.
- 6.2 The Buyer may cancel an order for Goods purchased under a Consumer Contract if the Company is unable to deliver the Goods within 90 days of any specified delivery date.
- 6.3 Except where clause 6.2 applies:
 - 6.3.1 The Company is not liable for any loss, damage or delay occasioned to the Buyer or its customers arising from late or non-delivery of the Goods;
 - 6.3.2 Late delivery or non-delivery does not vary these Conditions or relieve the Buyer from its obligations to accept the Goods and to pay for the Goods.
- 6.4 The Company may at its option deliver the Goods to the Buyer in any number of installments unless otherwise agreed in writing by the Company.
- 6.5 Delivery of the Goods will be taken to have occurred when either the Goods are:
 - 6.5.1 Collected by the Buyer or the Buyer's agent; or
 - 6.5.2 Off-loaded at the Buyer's nominated point of delivery.
- 6.6 The Goods shall be at the risk of the Buyer after delivery.

7. AUSTRALIAN CONSUMER LAW

- 7.1 Where the Contract under which the Buyer purchases the Goods is a Consumer Contract (ie where the Buyer is a Consumer):
 - 7.1.1 The Goods are supplied subject to the Consumer Guarantees;
 - 7.1.2 If the Goods fail to meet any Consumer Guarantee, the Buyer will be entitled to such rights and remedies as are permitted or provided in the Australian Consumer Law for such failure, to the extent that such rights and remedies cannot be lawfully excluded. This may include the right to reject or return the Goods and obtain a refund, have the failure remedied by repair or replacement/substitution or to receive compensation for any reduction in the value of the Goods below the price paid or payable for them;
 - 7.1.3 The Buyer may only exercise any right or remedy for breach of a Consumer Guarantee strictly in accordance with the rights and responsibilities of the Buyer under the Australian Consumer Law;
 - 7.1.4 Where the Goods are not ordinarily acquired for personal, domestic or household use or consumption, then, unless the Company is the manufacturer of the Goods under the Australian Consumer Law, the Company's liability for breach of a Consumer Guarantee is limited at the Company's option to repairing or replacing the Goods, supplying equivalent goods or paying the costs of the repair or replacement of the Goods or of acquiring equivalent goods.
- 7.2 Where the Buyer resupplies the Goods to a Consumer and the Goods are not ordinarily acquired for personal, domestic or household use or consumption, the Company's liability to the Buyer in connection with any breach of a Consumer Guarantee in respect of the Goods is limited to paying to the Buyer an amount equal to the cost of replacing the Goods, supplying equivalent goods or having the Goods repaired, whichever is the lower amount.

8. GENERAL LIMITATION ON LIABILITY

- 8.1 This clause 8 does not limit the liability of the Company under Consumer Contracts.
- 8.2 The Company shall not be liable for any guarantee, warranty or representation as to the quality, performance, and fitness for purpose or otherwise of any Goods unless expressed in writing and signed on behalf of the Company and any such warranty or representation shall be limited to its express terms.
- 8.3 None of the Implied Terms apply to any Contract except to the extent that they cannot be lawfully excluded.
- 8.4 The Company's liability for breach of any provision of any such Contract or for breach of any Implied Terms which by force of law cannot be excluded from applying to any such Contract is limited at the option of the Company to repairing or re-supplying Goods which have been found defective, or, paying the cost of repairing or re-supplying Goods which have been found defective.
- 8.5 The Company is not liable in tort for any loss or damages suffered by the Buyer or by any third party.
- 8.6 In no circumstance whatsoever shall the Company be liable to the Buyer or to any third party for any loss of data or profits, loss of anticipated savings, economic loss or interruption of business or for any indirect or consequential loss ("Consequential Loss") arising out of the late delivery of Goods or any failure to perform or observe the Company's obligations under any Contract or Implied Terms and the Buyer will keep the Company fully indemnified against any claim made against the Company by a third party for any such Consequential Loss.

9. PRICES AND GST

- 9.1 Unless otherwise stated all prices quoted by the Company are net, exclusive of Goods and Services Tax (GST).
- 9.2 GST applied to all supplies of Goods made by the Company and the amount payable by the Buyer will be increased by a percentage equal to the prevailing of GST rate at the time of delivery of the Goods.
- 9.3 Unless otherwise agreed, prices do not include the cost of delivery of Goods.

10. CREDIT PAYMENT

- 10.1 Where an Application for Credit Account is approved for the Buyer, the purchase price of the Goods is payable within thirty (30) days from the end of the month of date of invoice unless other terms of payment are expressly stated on the invoice. If payment is made on or before the due date, the agreed settlement discount (if any) may be deducted from that payment.
- 10.2 The Company reserves the right to withdraw approval of an Application for Credit Account for the Buyer at any time by notice to the Buyer.
- 10.3 The Company reserves the right to request such security or additional security for any credit arrangements with the Buyer as the Company shall in its discretion think fit and shall be entitled to withhold supply of any Goods or credit arrangements until such security or additional security is provided by the Buyer.

11. CASH SALES

Where no Application for Credit Account has been approved for the Buyer, or approval of the Application for Credit Account is withdrawn, the purchase price of the Goods must be paid in full on placement of the Order, or where expressly agreed in writing by the Company, on delivery of the Goods.

12. PAYMENT

- 12.1 All amounts payable to the Company by the Buyer must be paid in Australian dollars in any manner required by the Company in writing in full without set-off on or before the due date for payment.
- 12.2 Any costs or charges incurred by the Company in collecting or attempting to collect overdue amounts must be paid by the Buyer to the Company on demand.
- 12.3 The Company reserves the right to charge interest at the rate of 12% per annum on all overdue amounts owing to it. Such interest will accrue daily and is payable on demand.
- 12.4 Payment will not be taken to occur until all cheques tendered in discharge of amounts owing to the Company have been presented and cleared in full.

13. MINIMUM ORDER & INVOICE

All orders will be charged at a minimum price of \$35 (excluding the costs of delivery of Goods) notwithstanding that the net value of the Order may be less than \$35.

14. TITLE TO GOODS

- 14.1 Title to and property in the Goods will not pass until the Buyer has paid all moneys owed to the Company on any account whatsoever.
- 14.2 Until the Buyer has paid all moneys owed to the Company:
 - 14.2.1 The Company retains a purchase money security interest in the Goods and the proceeds of sale of the Goods under the PPSA;
 - 14.2.2 The relationship of the Buyer to the Company is as a fiduciary in respect of the Goods and accordingly:
 - 14.2.2.1 The Buyer must store the Goods in such a way that they can be recognised as the property of the Company;
 - 14.2.2.2 Upon re sale of the Goods by the Buyer, the Company will have the right to trace the full proceeds of sale; and
 - 14.2.2.3 The Buyer must account to the Company for such proceeds of sale and the Company may recover from such proceeds of sale any moneys then owing to the Company on any account whatsoever.
 - 14.2.3 The Company reserves the right to enter upon any premises for the purpose of repossessing the Goods without prejudice to any other rights of recovery available and the Buyer grants the Company a licence to enter such premises for the purpose of exercising such right.
- 14.3 The Buyer must do all things reasonably required by the Company in respect of the registration of the Company's interest in the Goods under this clause or the enforcement of the Company's rights under the PPSA in respect of the goods.
- 14.4 The Buyer waives any right the Buyer has under the PPSA:
 - 14.4.1 To receive notice in relation to registration of the Company's interest in the Goods under the PPSA; and
 - 14.4.2 To claim damages against the Company under Section 271 of the PPSA.

15. QUOTATIONS

- 15.1 Subject to clause 15.2, all prices quoted for Goods are valid quotes for 30 days from the date of Quotation.
- 15.2 Quotations are based on the current costs of sourcing the Goods and unless the Company has otherwise agreed, are subject to amendment by the Company before or after the Quotation is made to meet any rise and fall in such costs between the date of Quotation and the date of producing the goods.
- 15.3 The Company reserves the right to charge the Buyer for any costs incurred as a result of the Buyer varying its Order or the contract correcting any errors or omissions referred to in clause 15.4 or requiring Goods urgently.
- 15.4 The Company will supply the Goods on the basis of the Order (whether written or oral). The Company will not be responsible for any errors or omissions in relation to the Goods where those errors or omissions result wholly or partially from incomplete or unclear instructions in the Order.

16. RETURNED GOODS

- 16.1 The Company is not under any duty to accept Goods returned by the Buyer and will do so only on terms to be agreed in writing in each individual case.
- 16.2 The Company may levy a handling charge of either 15% of the Order value or \$35 (whichever is greater) for any accepted returns. Goods delivered incorrectly, found to be defective or that fail to meet any Consumer Guarantees will be exempt from this handling charge.
- 16.3 Nothing in clause 16.1 affects the Buyer's rights under the Australian Consumer Law or in respect of any breach of Implied Terms.

17. CANCELLATION

- 17.1 The Company may cancel any Contract any time before Goods are delivered by giving written notice to the Buyer. On giving such notice, the Company will repay to the Buyer any sums paid in respect of the Goods. The Company will not have any other liability in respect of such cancellation.
- 17.2 Subject to clause 6.2, the Buyer may not cancel a Contract at any time except with the Company's prior written consent.
- 17.3 In the event that the Buyer cancels a Contract otherwise than under clause 6.2:
 - 17.3.1 The Company may retain any deposit or other sums paid on account of the Goods; and
 - 17.3.2 If payment for the Goods is not already made in full, the Buyer will be responsible for any losses incurred by the Company in respect of such cancellation (including loss of profits, anticipated savings, economic loss or interruption of business loss or other incidental, consequential or indirect damages).
- 17.4 In the event the Buyer cancels a Contract under clause 6.2, the Company will repay to the Buyer any sums paid in respect of the Goods. The Company will not have any other liability in respect of such cancellation.

18. SUSPENSION OR TERMINATION BY THE COMPANY

- 18.1 If the Buyer makes a default in any payment due to the Company for any Goods provided by the Company, commits any act of bankruptcy or enters into liquidation whether voluntary or involuntary, the Company may in its absolute discretion, suspend delivery of any Goods to the Buyer or cancel any Contract with the Buyer, without prejudice to its rights hereunder.
- 18.2 Any default by the Buyer or cancellation, suspension or termination by the Company shall in no way prejudice any rights of the Company against the Buyer whatsoever, including any right to recover any amounts due for the Goods, or the Goods themselves, previously supplied by the Company to the Buyer.

19. PLACE OF CONTRACT

- 19.1 This Contract is made in the State of South Australia.
- 19.2 The Buyer and Company agree that unless otherwise stipulated by the Company all disputes arising between them shall be submitted to the courts of the State of South Australia and any court competent to hear appeals from those courts of first instance.

20. MISCELLANEOUS

- 20.1 A Contract may be altered in writing signed by each party.
- 20.2 Unless otherwise provided, a party may in its discretion give (conditionally or unconditionally) or withhold any approval or consent under a Contract.
- 20.3 A party must not assign or otherwise deal with a Contract or any right under it without the written consent of the other party.
- 20.4 A Contract constitutes the entire agreement between the parties about its subject matter and supersedes any prior understanding, agreement, condition, warranty, indemnity or representation about its subject matter.
- 20.5 A waiver of a provision or right under a Contract must be in writing signed by the party giving the waiver and is effective only to the extent set out in the written waiver.
- 20.6 The failure, delay, relaxation or indulgence by a party in exercising a power or right under a Contract is not a waiver of that power or right.
- 20.7 An exercise of a power or right under a Contract does not preclude a further exercise of it or the exercise of another right or power.
- 20.8 Each indemnity, obligation of confidence and other term capable of taking effect after the expiration or termination of a Contract, remains in force after the expiration or termination of the Contract.

21. INTERPRETATION

- 21.1 Headings do not affect interpretation;
- 21.2 Singular includes plural and plural includes singular;
- 21.3 A reference to a party includes its executors, administrators, successors and permitted assigns;
- 21.4 A reference to a person includes a partnership, corporation, association, government body and any other entity;
- 21.5 An agreement, representation, warranty or indemnity by two or more parties (including where two or more persons are included in the same defined term) binds them jointly and severally;
- 21.6 An agreement, representation, warranty or indemnity in favour of two or more parties (including where two or more persons are included in the same defined term) is for the benefit of them jointly and severally;
- 21.7 A reference to legislation includes any amendment to it, any legislation substituted for it, and any subordinate legislation made under it;
- 21.8 A provision is not construed against a party only because that party drafted it;
- 21.9 An unenforceable provision or part of a provision may be severed, and the remainder of these Conditions continues in force, unless this would materially change the intended effect of these Conditions;
- 21.10 The meaning of general words is not limited by specific examples introduced by 'including', 'for example' or similar expression.

PRIVACY NOTICE AND CONSENT**Acknowledgment of receipt of Privacy Statement**

Each individual who is the Buyer, a partner in the Buyer, a director of the Buyer, or a Guarantor, and who has signed this Application for Credit Account, acknowledges that they have received a copy of the Company's Privacy Statement which contains important information about the Company's management of personal information. Obtaining reports from credit-reporting agencies The Company gives notice that it may give personal information about an individual who is the Buyer, a partner in the Buyer, a Director of the Buyer or a Guarantor to a credit-reporting agency for the following purposes:

- to obtain a consumer credit report about the individual, and/or
- to allow the credit reporting agency to create or maintain a credit information file containing information about the individual.

The information that may be given is limited to:

- identity particulars-name, sex, current address, previous two addresses, date of birth, name of employer, drivers licence number,
- the fact that the individual has applied for credit and the amount,
- the fact that the Company is a current credit provider to the individual,
- payments that are overdue for more than 60 days, and for which debt collection action has started,
- advice that payments are no longer overdue in respect of any default that has been listed,
- information that, in the opinion of the Company, the individual has committed a serious credit infringement (that is, acted fraudulently or shown an intention not to comply with the individual's credit obligations),
- cheques drawn by the Buyer for \$100 or more which have been dishonoured more than once.

This information may be given before, during or after the provision of credit to the Buyer. Obtaining and exchanging information about individuals who are Buyers or partners in Buyers Each individual who is the Buyer, or a partner in the Buyer, agrees that:

- the Company may obtain information about the individual from a credit-reporting agency if the Company considers it relevant to the assessment of the Buyer's application for credit;
- the Company may obtain information about the individual from the individual's employer that may include the nature of the employment (full time, part time, contract or casual), the length of employment, the minimum hours, and the rates of pay);
- the Company may exchange information about the individual (which can include anything about the individual's credit worthiness, credit standing, credit history or credit capacity that credit providers are allowed to exchange under the Privacy Act) with those credit providers named in this Application or in a consumer credit report obtained by the Company for the following purposes:
 - to assess an application by the individual for credit,
 - to notify other credit providers of a default by the individual,
 - to exchange information with other credit providers as to the status of the Buyer's account where the individual is in default with other credit providers, and
 - to assess the individual's credit worthiness.

Obtaining information about individuals who are Directors of Buyers Each individual who is a Director of the Buyer, and who has signed this Application, agrees that the Company may obtain information about the individual from a credit-reporting agency if the Company considers it relevant to the assessment of the Buyer's application for credit. Obtaining information about individuals who are Guarantors. Each individual who is a Guarantor, and who has signed this Application, agrees that the Company may obtain information about the individual from a credit-reporting agency if the Company considers it relevant to the assessment of whether to accept the individual as a guarantor in respect of credit the Buyer has applied for or obtained.

Limits of Liability

This catalogue is intended as a product offering. It is not intended to be a user or technical manual. Information in this catalogue is subject to change without notice. All users and distributors of products sold through this catalogue should contact Dixon® with questions of use, compatibilities, coupling procedures and life of product. Our full-time engineering and test staff are always available to recommend uses and to assist distributors and users with any questions. All product images are representative.



Safety



Safety logos, which appear throughout our catalogue, are used as a reminder that the user should carefully review for the appropriateness of the product for the media, application and environment in which it will be used.

NOTE: Because of the health hazards associated with contamination and lead content in drinking water systems, Dixon® couplings, unless otherwise specifically approved, are not recommended for potable water service and should not be used in applications where drinking water will contact the wetted surfaces of the coupling.

Trademarks

All other trademarks appearing in the Dixon® Illustrated Price List are the property of their respective owners.

Copyright

Copyright © 2018 by Dixon Valve and Coupling

All rights reserved. This book is copyrighted material. Use, reproduction or copying of it by anyone other than Dixon® is strictly forbidden without its express written consent.

NOTE: Reasonable care has been taken in preparing this catalogue. Dixon Valve & Coupling Company reserves the right to make corrections.

Table of Contents

Hose Fittings
pages 4 - 18

Hoses
pages 19 - 27

Valves
pages 28 - 34

Steel Pipe Fittings
pages 35 - 41

Shouldered Pipe Fittings
pages 42 - 44

Anfo Pressure Loader & Spares
pages 45 - 51

Specialty Mining Products
page 52

Flomax Fluid Transfer Systems
pages 53 - 54

Fire Protection
page 55

Plasson Compression Fittings
pages 56 - 64

Paint & Lifting Gear
pages 65 - 66

AUSTRALIA

SA Adelaide (sales)

170 Francis Road
Wingfield SA 5013
ph: 1300 134 651
fax: (08) 8202 6096
email: customerservice@dixonvalve.com.au

QLD Brisbane

6 Union Circuit
Yatala QLD 4207
ph: 1300 134 651
fax: (07) 3807 1843
email: customerservice@dixonvalve.com.au

QLD Mackay

38 John Vella Drive
Paget QLD 4740
ph: 1300 134 651
fax: (07) 4952 5922
email: customerservice@dixonvalve.com.au

VIC Melbourne

13 Commercial Drive
Dandenong VIC 3175
ph: 1300 134 651
fax: (03) 9706 5324
email: customerservice@dixonvalve.com.au

WA Perth

19 Baile Road
Canning Vale WA 6155
ph: 1300 134 651
fax: (08) 9455 4983
email: customerservice@dixonvalve.com.au

NSW Sydney

15 Watsford Road
Campbelltown NSW 2560
ph: 1300 134 651
fax: (02) 4627 4026
email: customerservice@dixonvalve.com.au

SINGAPORE

Dixon™ (Asia Pacific) Pty Ltd

Loyang Offshore Supply Base
25 Loyang Crescent
Blk 302 TOPS Avenue 3 #02-08
Singapore 508988
ph: +65 6232 5272
email: customerservice@dixonvalve.com.sg
web: dixonvalve.com.sg

CHINA

Dixon™ (Shanghai) Trading Co. Ltd

Room 1201 Sun Building
No 3553 North Zhongshan Road
Putuo District
Shanghai 200063
ph: +86 021 6173 7998
fax: +86 021 6173 8589
email: customerservice@dixonvalve.com.cn
web: dixonvalve.com.cn



The Right Connection®

1300 134 651

customerservice@dixonvalve.com.au

Dixon™ (Asia Pacific) Pty Ltd

170 Francis Road • Wingfield SA 5013

PO Box 2491 • Regency Park SA 5942

ph: +61 8 8202 6000

fax: +61 8 8202 6099

dixonvalve.com.au

