

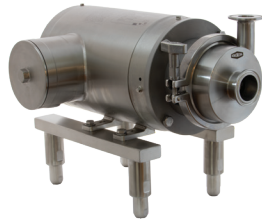
Wineries, Breweries, and Distilleries Product Range

1300 134 651 | dixonvalve.com.au

Centrifugal Pumps



BC/BP-Series



MB100-Series



ExD-Series

Applications

- Unloading
- Transfer
- CIP supply

Materials

- 316L
- Buna-N, EPDM, silicone, and FKM elastomers

Features

- Wet ends, motor pump units, and carts
- 3A certified for CIP

Sizes

- Inlet 1" to 6"
- Outlet 1-1/2" to 4"

RZL-Series Positive Displacement Pumps



Applications

- Unloading
- Fluid transfer
- Metering
- CIP supply

Materials

- 316L

Features

- Front loading seals
- Various rotor options
- 100 to 300 models stainless steel gear box standard
- 3A and EHEDG certified
- CIP certified

Sizes

- 1" to 10"

B5107 Series Butterfly Valves



B5107-Series

Applications

- Isolation
- Diversion

Materials

- CB5107: 316L

Sizes

- 1/2" to 8"

Features

B5107

- Various actuation and control packages
- Multiple handle options
- Seat materials: silicone, EPDM, and FKM elastomers

BV2C-Series Ball Valves



Applications

- Isolation
- Diversion
- Control

Materials

- CF8M

Sizes

- 1/2" to 4"

Features

- 5 encapsulated seat materials available
- ISO 5211 mounting pad standard
- Optional 2-way V-port seat
- Various actuation and control packages

TV-Series Tank Vent Valves



Applications

- Liquid filtration

Cartridge Element Options

- Melt blown
- PES
- PHE
- Carbon
- Stainless steel

Materials

- 316L

Sizes

- Port connection 1" to 4"
- Number of elements 1, 3, 5, 7, 12, and 21
- Cartridge element lengths - 10", 20", 30" and 40"

Topping Gun, Gauges, Sample Valves, Sight Glasses, and Spray Balls



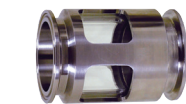
Topping Gun



Pressure Gauges



Sample Valves



Sight Glasses



Spray Balls



Swivels



Style 20



Style 40

Applications

- To rotate hose assemblies without disconnecting

Materials

- 316L
- Silicone or EPDM gaskets

Features

- Clamp or weld connection
- Available in Styles 20 through 70
- 3A certified for COP

Sizes

- 1" to 4"

Sanitary Filtration



PVC



Stainless Steel

Applications

- Secondary tank protection during filling or draining of tanks

Features

PVC

- PVC with 304 stainless steel dome
- 2" and 3" clamp connections on same valve

Stainless Steel

- Stainless steel valve
- Stainless steel screen
- 2", 3", and 4"



Dixon (Asia Pacific) Pty Ltd

170 Francis Road
Wingfield SA 5013

1300 134 651

dixonvalve.com.au