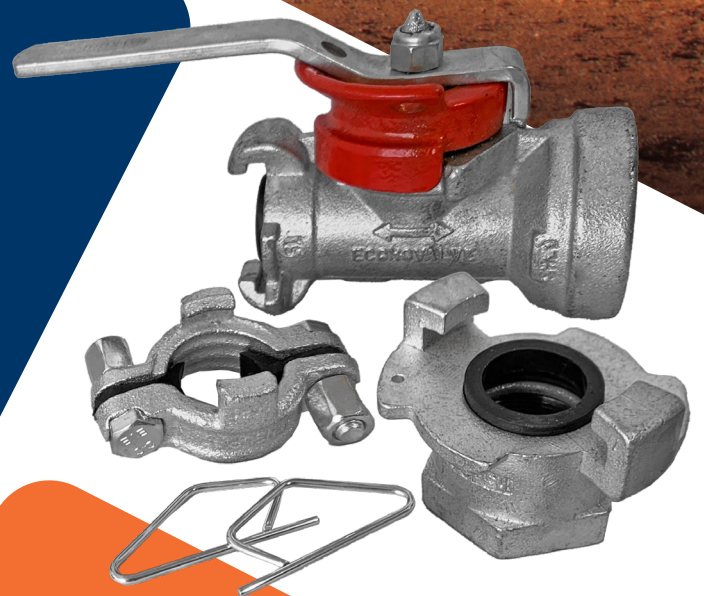




minsup
fittings

1300 134 651 | dixonvalve.com.au





Why you should insist on Minsup®

Range

Dixon's Minsup® range features a range of high quality products, including the popular Claw Couplings, Claw Clamps, Minsup® Shouldered Butterfly Valves and Econovalves. Additionally, the range includes Minsup® Shouldered Couplings and Whipchecks for enhanced safety and performance. The Minsup® Claw Couplings are renowned for their quick, safe, and reliable connections. Dixon designs, engineers, and tests products to ensure superior quality and performance.

Innovation

Dixon Minsup® Claw Coupling is the original design engineered by Dixon that has gone on to be used globally. Through innovation Dixon have further developed the Minsup® range meeting all the requirements in the Mining Industry - from the King Crimp™ Type A Hosetail, One Piece Blank End, One Piece Surelock® Medium to Small Reducer and the new 2" Claw Clamp design.

Engineering

Minsup® Claw Couplings have been engineered by a team who are at the top of their field and are not willing to compromise on quality just to save money. This is why their Minsup® Claw Couplings are still cast using the Investment Casting method. This method is the process with higher accuracy and repeatability which Dixon are not willing to compromise on. The grades of materials are carefully selected by their engineers with consideration to strength, ductility, corrosion resistance and manufacturability.

Manufacturing

Dixon has been manufacturing the Minsup® Claw Coupling for over 65 years. It has been designed and manufactured to strict industry standards, procedures and quality assurance audit programs. This has given Dixon the control over all aspects of the manufacturing from engineering the concept and design, the tooling used through to the testing.

Sales & Technical Support

Dixon's Sales Support Team have over 25 years of experience providing product advice and recommendations in the Mining Market. Their Sales Representatives and Technical Customer Support Teams are located nationally providing you with additional support on their full range of products.

minsupsup

minsupsup

The Trusted Brand in the Mining Industry

Minsup® Claw Couplings	3
Minsup® A-Type - SG Iron	3
Male Thread	3
Female Thread	3
Hose Tail	3
Three-way	4
Blank End	4
A-Type to Medium Surelock® Adaptor	4
A-Type Standard Seal	4
Minsup® A-Type - Bellow Seal	5
Males Thread	5
Females Thread	5
Hose Tails	5
King Crimp™ Hose Tails	6
Three-way	6
Blank End	6
Composite	6
Seal Insertion Tool	6
Surelock® Couplings - Bellow Seal	7
Surelock® Working Pressures	7
Male Thread - Small Head	7
Male Thread - Medium Head	7
Male Thread - Large Head	8
Female Thread - Small Head	8
Female Thread - Medium Head	8
Female Thread - Large Head	8
Hose Tail - Small Head	9
Hose Tail - Medium Head	9
Hose Tail - Large Head	9
Blank End	10
Three-way	10
2" Shouldered Adaptor	10
Small to Medium Adaptor	11
Grooved Adaptor	11
Composite Bellow Seal	11
Seal Insertion Tools	11
Minsup® A-Type and Surelock® Accessories	12
Safety Locking Pin	12
Gauze	12
Chain	12
Lanyard	12
Crimp Ring Ferrules	12
Minsup® Safety Claw Clamps	13
Chain Restrainers	13
Minsup® Double Bolt Clamps	13

Minsup® A-Type - SG Iron Standard Seal 500 PSI



Application

- Minsup® claw couplings are universal hose couplings that provide quick, safe, and reliable connections. Claw couplings are most commonly used for conveying air, and water, and are not to be used for steam applications. Common industry applications include, underground and surface mining, mineral processing, compressor, and air tool industries.

Features

- Standard coupling heads ensure the interchangeability of all sizes, regardless of whether the mating coupling is male, female or hose tail
- Complies with AS2554 and AS2660

Materials

- SG Iron ISO 1083, zinc plated AS1789

Seal Materials

- Nitrile Buna-N Rubber (NBR standard seal)
- FKM

Temperature Range

- Nitrile Buna-N Rubber (NBR) seal -29°C to 71°C
- FKM seal -30°C to 200°C

Working Pressure

- Standard seal 500 PSI

Size Range

- 10mm to 32mm (3/8" to 1 1/4")

Compatible With

- European A-Type claw couplings

Male Thread

Thread Size		Part Numbers		Seal Type	Box Quantity
mm	inch	Male BSP	Male NPT		
10	3/8	08/001/12/000	08/001/12/004	AWR4 Standard	50
15	1/2	08/001/09/000	08/001/09/004	AWR4 Standard	50
20	3/4	08/001/06/000	08/001/06/004	AWR4 Standard	50
25	1	08/001/03/000	08/001/03/004	AWR4 Standard	50
32	1 1/4	08/001/01/000	-	AWR4 Standard	50

Product Group: AA01



Female Thread

Thread Size		Part Numbers		Seal Type	Box Quantity
mm	inch	Female BSP	Female NPT		
10	3/8	08/001/13/000	08/001/13/004	AWR4 Standard	50
15	1/2	08/001/10/000	08/001/10/004	AWR4 Standard	50
20	3/4	08/001/07/000	08/001/07/004	AWR4 Standard	50
25	1	08/001/04/000	08/001/04/004	AWR4 Standard	50

Product Group: AA01



Hose Tail

Thread Size		Part Numbers	Seal Type	Box Quantity
mm	inch			
10	3/8	08/001/14/000	AWR4 Standard	50
15	1/2	08/001/11/000	AWR4 Standard	50
20	3/4	08/001/08/000	AWR4 Standard	50
25	1	08/001/05/000	AWR4 Standard	50
32	1 1/4	08/001/02/000	AWR4 Standard	50

Product Group: AA01



For Minsup® safety claw clamps

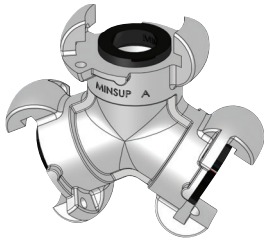


For crimp ring ferrules



- Never use A-Type couplings for steam service. None of Dixon's™ catalogue information is to be interpreted to mean that this type of coupling is suitable for use on steam hose

Minsup® A-Type - SG Iron Standard Seal 500 PSI



Three-Way

Part Number	Seal Type	Box Quantity
08/001/16/000	AWR4 Standard	20

Product Group: AA01



Blank End

Part Number	Seal Type	Box Quantity
08/001/15/000	AWR4 Standard	50

Product Group: AA01

A-Type to Medium Surelock® Adaptor



Application

- Enables easy connection between Minsup® A-Type & Medium Surelock® - 40mm to 50mm.

Part Number	Seal Type	Box Quantity
08/013/32/000	AWR4 standard/medium Surelock® bellow	10

Product Group: AA01

A-Type Standard Seal - 500 PSI



Part Numbers	Material	Box Quantity
AWR4	Nitrile Buna Rubber	50
AWR4V	FKM	50

A-Type standard seals cannot be substituted with a bellow seal

Product Group: AD05



- Never use A-Type couplings for steam service. None of Dixon's™ catalogue information is to be interpreted to mean that this type of coupling is suitable for use on steam hose

**Experience Unmatched Quality
and Reliability** with Minsup®

The Trusted Brand in the Mining Industry



Minsup® A-Type - Bellow Seal Bellow Seal 1000 PSI

Application

- Minsup® claw couplings are universal hose couplings that provide quick, safe, and reliable connections. Claw couplings are most commonly used for conveying air, and water, and are not to be used for steam applications. Common industry applications include, underground and surface mining, mineral processing, compressor, and air tool industries.

Features

- Standard coupling heads ensure the interchangeability of all sizes, regardless of whether the mating coupling is male, female or hose tail
- Complies with AS2554 and AS2660

Temperature Range

- Nitrile Buna-N Rubber (NBR) seal -29°C to 71°C
- FKM seal -30°C to 200°C

Working Pressure

- Standard seal 1000 PSI

Materials

- SG Iron ISO 1083, zinc plated AS1789
- 316 Stainless steel CF8M

Size Range

- 10mm to 32mm (3/8" to 1 1/4")

Seal Materials

- Nitrile Buna-N Rubber (NBR standard seal)
- FKM

Male Thread

Thread Size		Part Numbers		Seal Type	Box Quantity
mm	inch	SG Iron	Stainless Steel		
10	3/8	ABS10M	-	Bellow	50
15	1/2	ABS15M	AM13BSPSTS-B	Bellow	50
20	3/4	ABS20M	AM20BSPSTS-B	Bellow	50
25 BSP	1 BSP	ABS25M	AM25BSPSTS-B	Bellow	50
25 NPT	1 NPT	-	AM25NPTSTS-B	Bellow	50
32	1 1/4	ABS32M	-	Bellow	50

Product Group: AA01



Female Thread

Thread Size		Part Numbers		Seal Type	Box Quantity
mm	inch	SG Iron	Stainless Steel		
10	3/8	ABS10F	-	Bellow	50
15	1/2	ABS15F	AF13BSPSTS-B	Bellow	50
20	3/4	ABS20F	AF20BSPSTS-B	Bellow	50
25 BSP	1 BSP	ABS25F	AF25BSPSTS-B	Bellow	50
25 NPT	1 NPT	-	AF25NPTSTS-B	Bellow	50

Product Group: AA01



Hose Tail

Thread Size		Part Numbers		Seal Type	Box Quantity
mm	inch	SG Iron	Stainless Steel		
10	3/8	ABS10H	-	Bellow	50
15	1/2	ABS15H	AH13STS-B	Bellow	50
20	3/4	ABS20H	AH20STS-B	Bellow	50
25	1	ABS25H	AH25STS-B	Bellow	50
32	1 1/4	ABS32H	-	Bellow	50

Product Group: AA01



For Minsup® safety claw clamps



For crimp ring ferrules



- A-Type standard seals cannot be substituted with a bellow seal
- Never use A-Type couplings for steam service. None of Dixon's™ catalogue information is to be interpreted to mean that this type of coupling is suitable for use on steam hose
- Maximum working pressure is based on the lowest-rated component of a completed assembly used at ambient temperature

King Crimp™ Hose Tail



SG Iron

Stainless Steel

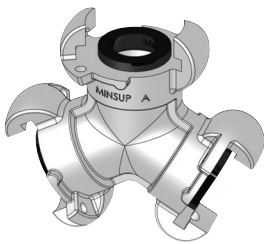
Thread Size		Part Numbers		Seal Type	Box Quantity
mm	inch	SG Iron	Stainless Steel		
25	1	AH25KC	AH25STSKC-B	Bellow	50



Designed for use with King Crimp™ ferrules & sleeves

Product Group: AA01

Three-Way



Part Number	Material	Seal Type	Box Quantity
ABS1032T	SG Iron	Bellow	20

Product Group: AA01

Blank End



SG Iron

Stainless Steel

Part Numbers		Seal Type	Box Quantity
SG Iron	Stainless Steel		
ABS1032B	AB1032STS-B ¹	Bellow	50

¹Includes chain

Product Group: AA01

Composite Bellow Seal - 1000 PSI

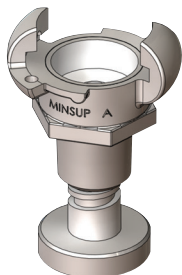


Part Numbers	Material	Box Quantity
ABS1032N	Nitrile Buna Rubber	50
ABS1032V	FKM	1

A-Type bellow seal can not be substituted with the standard seal

Product Group: AA01

Seal Insertion Tools



Part Number	Box Quantity
IT100AB	1

Product Group: AA01

Surelock® - Bellow Seal Bellow Seal 1000 PSI

Application

- Minsup® Surelock® couplings are universal hose claw couplings that provide quick, safe and reliable connections. Claw couplings are designed with a common or universal claw which enables differing hose sizes and nominal bores to be connected. Claw couplings are commonly used for conveying air and water, and are not to be used for steam applications. Dixon™ Minsup® Surelock® stainless steel couplings are high-quality precision cast fittings suitable for corrosive environments.

Features

- Complies with AS2554 and AS2660

Materials

- SG Iron ISO 1083, zinc plated AS1789
- 316 Stainless steel CF8M

Seal Materials

- Nitrile Buna-N Rubber (NBR) is the standard seal
- FKM is available

Temperature Range

- Nitrile Buna-N Rubber (NBR) seal -29°C to 71°C
- FKM seal -30°C to 200°C

Working Pressure

- 1000 PSI - 10mm to 50mm (3/8" to 2")
- 500 PSI - 80mm (3")

Size Range

- Small: 10mm to 32mm (3/8" to 1 1/4")
- Medium: 40mm & 50mm (1 1/2" & 2")
- Large: 80mm (3")

Surelock® Working Pressures

Thread Size		Working Pressure (PSI)	Working Pressure (MPa)	Burst Pressure (PSI)	Burst Pressure (MPa)
mm	inch				
10 - 32	3/8 - 1 1/4	1000	6.9	4000	27.58
38 - 50	1 1/2 - 2	1000	6.9	4000	27.58
80	3	500	3.4	2000	13.80

Surelock® Male

Male Thread - Small Head

Thread Size		Part Numbers				Box Quantity
		BSP		NPT		
mm	inch	SG Iron	Stainless Steel	SG Iron	Stainless Steel	
10	3/8	08/013/23/000	-	08/013/23/001	-	50
15	1/2	08/013/20/000	SM13BSPSTS	08/013/20/001	-	50
20	3/4	08/013/17/000	SM20BSPSTS	08/013/17/001	SM20NPTSTS	50
25	1	08/013/14/000	SM25BSPSTS	08/013/14/001	SM25NPTSTS	50
32	1 1/4	08/013/11/000	-	-	-	50

Product Group: AA03



SG Iron

Stainless Steel

Male Thread - Medium Head

Thread Size		Part Numbers				Box Quantity
		BSP		NPT		
mm	inch	SG Iron	Stainless Steel	SG Iron	Stainless Steel	
40	1 1/2	08/013/07/000	-	08/013/07/001	-	15
50	2	08/013/04/000	SM50BSPSTS	08/013/04/001	SM50NPTSTS	15

Product Group: AA04



SG Iron

Stainless Steel



Male Thread - Large Head

Thread Size		Part Number		Seal Type	Box Quantity
mm	inch	SG Iron	Stainless Steel		
80	3	08/013/01/000	-	Large bellow	3

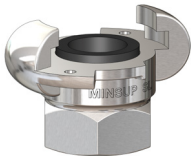
Product Group: AA05

Surelock® Female

Female Thread - Small Head



SG Iron



Stainless Steel

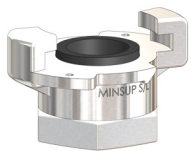
Thread Size		Part Numbers			Box Quantity
mm	inch	BSP		NPT	
		SG Iron	Stainless Steel	SG Iron	
10	3/8	08/013/24/000	-	08/013/24/001	50
15	1/2	08/013/21/000	SF13BSPSTS	-	50
20	3/4	08/013/18/000	SF20BSPSTS	08/013/18/001	50
25	1	08/013/15/000	SF25BSPSTS	08/013/15/001	50

Product Group: AA03

Female Thread - Medium Head



SG Iron

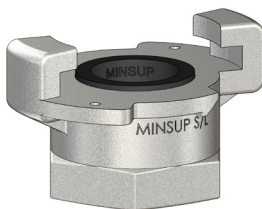


Stainless Steel

Thread Size		Part Numbers			Box Quantity
mm	inch	BSP		NPT	
		SG Iron	Stainless Steel	SG Iron	
40	1 1/2	08/013/08/000	-	08/013/08/001	15
50	2	08/013/05/000	SF50BSPSTS	08/013/05/001	15

Product Group: AA04

Female Thread - Large Head



Thread Size		Part Numbers		Seal Type	Box Quantity
mm	inch	SG Iron	Stainless Steel		
80	3	08/013/02/000	-	Large bellow	3

Product Group: AA05



- Bellow seals cannot be substituted with an A-Type standard seal
- Never use Surelock® couplings for steam service. None of Dixon's™ catalogue information is to be interpreted to mean that this type of coupling is suitable for use on steam hose

Surelock® Hose Tails



Hose Tail - Small Head

Hose Tail Size		Part Numbers			Box Quantity
		Standard		King Crimp™	
mm	inch	SG Iron	Stainless Steel	SG Iron	
10	3/8	08/013/25/000	-	-	50
15	1/2	08/013/22/000	SH13STS ¹	-	50
20	3/4	08/013/19/000	SH20STS ¹	-	50
25	1	08/013/16/000	SH25STS ¹	SH25KC ²	50
32	1 1/4	08/013/13/000	-	-	50

Product Group: AA03



Standard Style



For Minsup® safety claw clamps



For crimp ring ferrules

Hose Tail - Medium Head

Hose Tail Size		Part Numbers			Box Quantity	
		Standard		King Crimp™		Cor-O-Zig
mm	inch	SG Iron	Stainless Steel	SG Iron	SG Iron	
40	1 1/2	08/013/10/000	-	-	08/013/33/000 ¹	15
50	2	08/013/06/000	SH50STS	SH50KC ²	08/013/34/000 ¹	15

Product Group: AA04



King Crimp™ Style



¹Designed to be used with Boss™ clamps

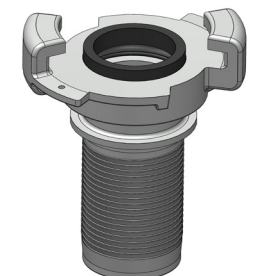


²Used with King Crimp™ ferrules & sleeves

Hose Tail - Large Head

Hose Tail Size		Part Number	Box Quantity
mm	inch	SG Iron	
80	3	SH75KC	2

Product Group: AA05



Designed to be used with Boss™ clamps



Used with King Crimp™ ferrules & sleeves



• Maximum working pressure is based on the lowest rated component of a completed assembly used at ambient temperature

Surelock® Blank End



Small Head

Size		Part Numbers		Box Quantity
mm	inch	SG Iron	Stainless Steel	
10 - 32	3/8 - 1 1/4	08/013/26/000	SB1032STS ¹	50

¹ Includes chain

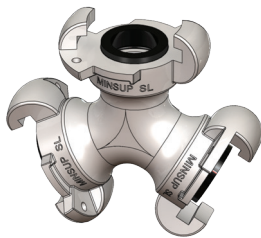
Product Group: AA03

Medium Head

Size		Part Number	Material	Box Quantity
mm	inch			
40 - 50	1 1/2 - 2	08/013/29/000	SG Iron	15

Product Group: AA04

Surelock® Three-Way



Small Head

Size		Part Number	Material	Box Quantity
mm	inch			
10 - 32	3/8 - 1 1/4	08/013/27/000	SG Iron	15

Product Group: AA03

Medium Head

Size		Part Number	Material	Box Quantity
mm	inch			
40 - 50	1 1/2 - 2	08/013/28/000	SG Iron	4

Product Group: AA04

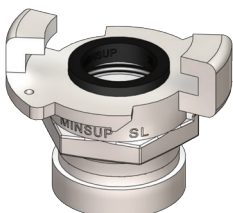
Surelock® 50mm (2") Shouldered Adaptor

Application

- Developed specifically for Australian underground mining applications, eliminates laborious threaded connections.

Materials

- Natural rubber gasket
- SG iron body ISO 1083:400-250-15



Size		Part Number	Working Pressure		Box Quantity
mm	inch		PSI	Bar	
50	2	SLV50	500	35	15

Product Group: AA04

Surelock® Small to Medium Adaptors

Application

- Enables easy connection between small Surelock® 10mm - 32mm (3/8" - 1 1/4") and medium Surelock® 40mm - 50mm (1 1/2" - 2").

Small Head Size		Medium Head Size		Part Number	Material	Box Quantity
mm	inch	mm	inch			
10 - 32	3/8 - 1 1/4	40 - 50	1 1/2 - 2	08/013/31/000	SG Iron	15

Product Group: AA04



Surelock® Grooved Adaptors

Small Head

Surelock® Size		Part Number	Roll Groove Size		Material
mm	inch		mm	inch	
25	1	SLG25	50	2	SG Iron

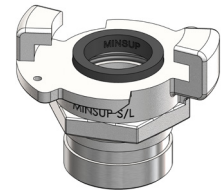
Product Group: AA03



Medium Head

Surelock® Size		Part Number	Roll Groove Size		Material
mm	inch		mm	inch	
50	2	SLG50	50	2	SG Iron

Product Group: AA03



Composite Bellow Seals

Size		Part Numbers		Seal Size
mm	inch	NBR	FKM	
10 - 32	3/8 - 1 1/4	05/007/07/000	05/007/07/000V	Small
40 - 50	1 1/2 - 2	05/007/05/000	05/007/05/000V	Medium
80	3	08/007/09/002	-	Large

Product Group: BA01



NBR

Seal Insertion Tools

Application

- Dixon's™ seal insertion tools are designed for high-volume seal replacement. Will ensure correct alignment of standard composite seals.

Size		Part Number	Description
mm	inch		
10 - 32	3/8 - 1 1/4	IT100SL	Small seal insertion tool
40 - 50	1 1/2 - 2	IT200SL	Medium seal insertion tool
80	3	IT300SL	Large seal insertion tool

Product Group: Small AA03
Medium AA04
Large AA05



- Bellow seals cannot be substituted with an A-Type standard seal
- Never use Surelock® couplings for steam service. None of Dixon's™ catalogue information is to be interpreted to mean that this type of coupling is suitable for use on steam hose

Minsup® A-Type and Surelock® - Accessories



Safety Locking Pins

Application

- The use of a Minsup® safety locking pin is necessary to ensure that Minsup® A-Type & Surelock® claw couplings cannot accidentally disconnect. This ensures that the fittings are properly connected as the pin will not go through the holes in both couplings until the couplings are locked into place.



Part Numbers	Material	Box Quantity
05/010/02/000B	Zinc Plated Mild Steel	1000
05/010/02/000SS	316 Stainless Steel	1000

Product Group: BA01

Lanyard

Application

- The ACL8 lanyard used with a Minsup® safety locking pin ensures that the fittings are properly connected and assists with preventing accidental disengagement.



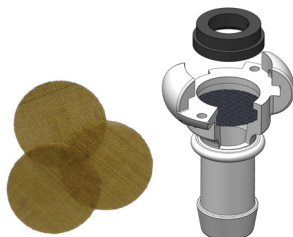
Part Number	Description
ACL8	Nylon lanyard

Product Group: AD05

Gauze - Small

Application

- Stainless gauze to suit Minsup® A Type and Surelock® couplings to eliminates airline debris from damaging in-line air tools or valve seals.



Part Number	Description
05/100/01/901	Minsup® small A-Type/Surelock® gauze

Product Group: AA01

Chain



Part Number	Description
CH-SS-BALL-250	SS316 ball chain - 250mm long with SS304 key rings

Product Group: AA01

Crimp Ring Ferrules

Application

- Designed for use with standard Minsup® hose tails.



Hose ID		Hose OD (mm)		Part Numbers	
mm	inch	from	to	Mild Steel	304 Stainless Steel
15	½	16.0	26.5	RCF012-MS	RCF012-SS
20	¾	24.0	32.5	RCF020-MS	RCF020-SS
25	1	31.0	39.5	RCF025-MS	RCF025-SS

Product Group: AA01

Minsup® Safety Claw Clamps



Application

- For use with Minsup® fittings. A rugged two-bolt hose clamp suitable for use with both rubber and PVC hoses in applications such as mining, air, water, and industrial. Featuring gripping fingers which interlock with the stem for a secure assembly.

Features

- Positive bolt head location to prevent bolt spinning when tightening
- Gripping fingers provide positive engagement with Minsup® hose tail

Inserts

- Nylon in 15mm (½"), 20mm (¾"), & 25mm (1")

Materials

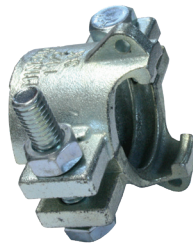
- SG Iron ISO 1083
- Zinc plated to AS1789
- Steel zinc plated bolts grade 8.8
- Nuts S1214 mild steel zinc plated

Use

- Check hose outside diameter (OD) to select clamp
- Refer assembly procedure for correct installation
- For use with Minsup® hose tails



12-25mm ID



40-50mm ID



40-50mm ID with chain

Nominal ID		Hose OD (mm)		Part Numbers	Bolt Torque		Box Quantity
mm	inch	from	to		ft-lbs	Nm	
12	½	22	28	08/023/42/000	18.4	25	100
20	¾	29	34	08/023/43/000	18.4	25	50
25	1	35	40	08/023/46/000	25.8	35	50
40	1 ½	51	58	08/023/05/000	50	67.8	20
40	1 ½	51	58	08/023/06/000 ¹	50	67.8	20
50	2	63	68	08/023/03S/00	60	81.3	15
50	2	65.5	71	08/023/03/000	60	81.3	15
50	2	65.5	71	08/023/04/000 ¹	60	81.3	15

¹ Includes chain

Product Group: A003

Chain Restrainers

Application

- This is a replacement chain for use with Minsup® 40mm (1½") and 50mm (2") double-bolt claw clamps.



Chain Size		Part Number	Description
mm	inch		
3	⅛	08/023/01/047A	For use with Minsup® double-bolt claw clamp Not recommended as a replacement for a whipcheck

Product Group: A003

Minsup® Double-Bolt Clamps



Nominal ID		Hose OD (mm)		Part Numbers	Bolt Torque		Box Quantity
mm	inch	from	to		ft-lbs	Nm	
12	½	24	27	08/023/14/000	18.4	25	100
20	¾	31	33	08/023/15/000	18.4	25	50
25	1	37	39	08/023/13/000	25.8	35	50

Product Group: A003



- Selecting the correct clamping device is critical to the performance & safety of any hose assembly. Worn-out hose fittings should be replaced. Bolt-type clamps should be re-tensioned regularly. For extra safety, retaining devices such as clips, chains or cables must be used. Dixon™ strongly recommends the use of a safety tag or warning label on all hose assemblies



The Right Connection®

Dixon (Asia Pacific) Pty Ltd

170 Francis Road
Wingfield SA 5013

1300 134 651

dixonvalve.com.au

minsups