



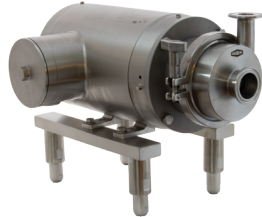
Dairy Market Product Range

1300 134 651 | dixonvalve.com.au

Centrifugal Pumps



BC/BP-Series



MB100-Series



ExD-Series

Applications

- Unloading
- Transfer
- CIP supply

Materials

- 316L
- Buna-N, EPDM, silicone, and FKM elastomers

Features

- Wet ends, motor pump units, and carts
- 3A certified for CIP

Sizes

- Inlet 1" to 6"
- Outlet 1-1/2" to 4"

RZL-Series Positive Displacement Pumps



Applications

- Unloading
- Fluid transfer
- Metering
- CIP supply

Materials

- 316L

Features

- Front loading seals
- Various rotor options
- 100 to 300 models stainless steel gear box standard
- 3A and EHEDG certified
- CIP certified

Sizes

- 1" to 10"

SSV-Series Seat Valves



Applications

- Isolation
- Diversion

Materials

- 316L

Features

- Body machined from solid bar
- Field serviceable
- Various control top options
- 3A certified for CIP

Sizes

- 1" to 4"

PMO Valves



Applications

- Separation of product and cleaning agent
- Manifolds
- Diversion

Materials

- 316L

Features

- Body machined from solid bar
- Standard O-rings
- Service possible without compressed air
- 3A certified for CIP

Sizes

- 1" to 4"

Sanitary Filtration



Applications

- Liquid filtration

Cartridge Element Options

- Melt blown
- PES
- PHE
- Carbon
- Stainless steel

Materials

- 316L

Sizes

- Port connection 1" to 4"
- Number of elements 1, 3, 5, 7, 12, and 21
- Cartridge element lengths - 10", 20", 30" and 40"

BSV-Series Sampling Valves



Applications

- Aseptic sampling

Materials

- 316L

Features

- Valve body from solid bar
- Manual override on actuated valve
- 3A and EHEDG certified
- CIP certified

Sizes

- 13mm x 1.5mm

HSG-Series Sight Glass



Applications

- View products and fluids

Materials

- Body: 316L stainless steel
- Sight glass: polycarbonate
- Gaskets: PTFE, EPDM, or FKM

Features

- Higher pressure ranges than other sight glasses
- Easy assembly and disassembly
- 3A certified for CIP

Sizes

- Single pin clamp: 1" - 6", EPDM or FKM gasket
- Bolted clamp: 1/2" - 6", PTFE gasket

Swivels



Style 20

Style 40

Applications

- To rotate hose assemblies without disconnecting

Materials

- 316L
- Silicone or EPDM gaskets

Features

- Clamp or weld connection
- Available in Styles 20 through 70
- 3A certified for COP

Sizes

- 1" to 4"



Dixon (Asia Pacific) Pty Ltd

170 Francis Road
Wingfield SA 5013

1300 134 651

dixonvalve.com.au