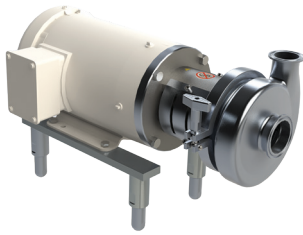




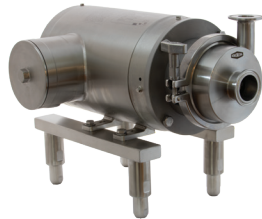
# **Beverage Processing Product Range**

1300 134 651 | [dixonvalve.com.au](http://dixonvalve.com.au)

## Centrifugal Pumps



BC/BP-Series



MB100-Series



ExD-Series

### Applications

- Unloading
- Transfer
- CIP supply

### Materials

- 316L
- Buna-N, EPDM, silicone, and FKM elastomers

### Features

- Wet ends, motor pump units, and carts
- 3A certified for CIP

### Sizes

- Inlet 1" to 6"
- Outlet 1-1/2" to 4"

## RZL-Series Positive Displacement Pumps



### Applications

- Unloading
- Fluid transfer
- Metering
- CIP supply

### Materials

- 316L

### Features

- Front loading seals
- Various rotor options
- 100 to 300 models stainless steel gear box standard
- 3A and EHEDG certified
- CIP certified

### Sizes

- 1" to 10"

## SSV-Series Seat Valves



### Applications

- Isolation
- Diversion

### Materials

- 316L

### Features

- Body machined from solid bar
- Field serviceable
- Various control top options
- 3A certified for CIP

### Sizes

- 1" to 4"

## Mix Proof Valves



### Applications

- Separation of product and cleaning agent
- Manifolds
- Diversion

### Materials

- 316L

### Features

- Body machined from solid bar
- Standard O-rings
- Service possible without compressed air
- 3A certified for CIP

### Sizes

- 1" to 4"

## Sanitary Filtration



### Applications

- Liquid filtration

### Cartridge Element Options

- Melt blown
- PES
- PHE
- Carbon
- Stainless steel

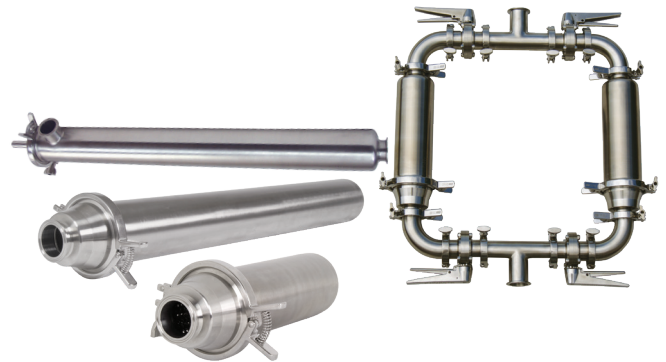
### Materials

- 316L

### Sizes

- Port connection 1" to 4"
- Number of elements 1, 3, 5, 7, 12, and 21
- Cartridge element lengths - 10", 20", 30" and 40"

## Strainers



### Applications

- Filtering

### Materials

- 316L

### Features

- Inline
- Side entry and side outlet
- Dual strainer assemblies using ball or butterfly valves
- 3A certified for CIP

### Sizes

- 1" to 3"

## B5107 Series Butterfly Valves



B5107-Series

### Applications

- Isolation
- Diversion

### Materials

- CB5107: 316L

### Sizes

- 1/2" to 8"

### Features

#### B5107

- Various actuation and control packages
- Multiple handle options
- Seat materials: silicone, EPDM, and FKM elastomers

## Check Valves, Sight Glasses, Sample Valves, and Swivels



Spring Check Valves

Sight Glasses



Y-Ball Check Valve



Swivels



Sample Valves



## **Dixon (Asia Pacific) Pty Ltd**

170 Francis Road  
Wingfield SA 5013

1300 134 651

**[dixonvalve.com.au](http://dixonvalve.com.au)**