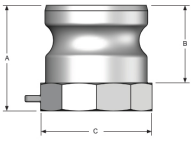


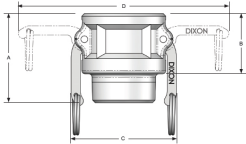
Dixon™ Stainless Steel Camlock Technical Information



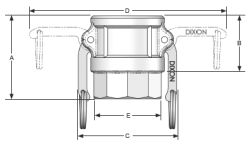
The Right Connection®



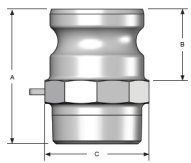
Type A - Size		20	25	32	40	50	65	80	100	150
A	Overall Length	40	49	55	55	63	79	83	86.5	82
B	Adaptor Length	28	35	42	41.5	48	50	51.5	53	56
C	Distance Across Flat	33	41	50	52	68	83	96	125.5	178
	Weight (kgs)	0.11	0.19	0.25	0.35	0.49	0.91	1.05	1.64	2.69



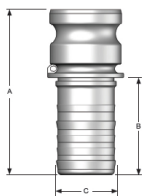
Type B - Size		20	25	32	40	50	65	80	100	150
A	Overall Length	52	59.5	68	69.5	75	83.5	88	92	100
B	Adaptor Length	32.5	68	43.5	44.5	51	53	55	56	62
C	Distance Across Flat	52	61.5	83	89.5	101.5	110	132.5	165	231
	Weight (kgs)	0.21	0.34	0.60	0.69	0.82	1.05	1.38	2.17	3.89



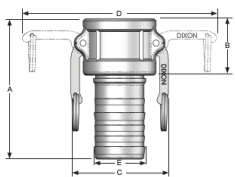
Type D - Size		20	25	32	40	50	65	80	100	150
A	Overall Length	51.5	59	67.5	68	75	82	84	91.5	94
B	Adaptor Length	32.5	38	44	44	50.5	53	54	55.5	63
C	Distance Across Flat	52	61.5	82.5	90	99	113	133	165	232
	Weight (kgs)	0.21	0.34	0.60	0.69	0.82	1.05	1.38	2.17	3.89



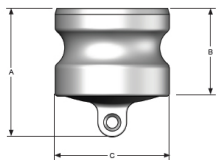
Type F - Size		20	25	32	40	50	65	80	100	150
A	Overall Length	62.58.5	69.5	79	79	90	99	104	111	116
B	Adaptor Length	27	34	43	42	48	49.5	51.5	56.5	57
C	Distance Across Flat	33	41	50	57.5	68	82.5	95.5	124	178
	Weight (kgs)	0.18	0.26	0.42	0.52	0.69	0.98	1.33	2.09	4.19



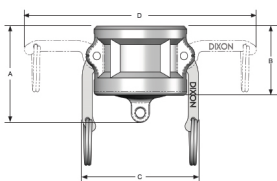
Type E - Size		20	25	32	40	50	65	80	100	150
A	Overall Length	91.5	108	113	115.5	128	134	156.5	177	213
B	Shank Length	53	60.5	62	62	76	78.5	101	111	143
C	Distance Across Flat	21	27	34	41	53.5	66	78.5	105	157
	Weight (kgs)	0.16	0.27	0.42	0.52	0.71	1.05	1.54	2.45	5.33



Type C - Size		20	25	32	40	50	65	80	100	150
A	Overall Length	86	100	107	110	128	134	160	168	205
B	Adaptor Length	54	62	64	66	77	83	106	112	140
C	Distance Across Flat	52	60	83	90	99	113	132.5	165	233
	Weight (kgs)	0.23	0.36	0.57	0.64	0.96	1.10	1.89	2.60	5.55



Type DP - Size		20	25	32	40	50	65	80	100	150
A	Overall Length	39.5	44	50	54	60	64	66	68.5	73.5
B	Adaptor Length	28	33	40	38	46	49.5	50	53	56
C	Distance Across Flat	32	36.5	45	53	63	76	91.5	119.5	176
	Weight (kgs)	0.09	0.13	0.25	0.27	0.40	0.66	0.77	1.09	3.01



Type DC - Size		20	25	32	40	50	65	80	100	150
A	Overall Length	44	51	58	61	63	69.5	68	72	80
B	Adaptor Length	33	38	42	45	51	52	54	58	65
C	Distance Across Flat	52	60	83	90	100	111	133	165	231
	Weight (kgs)	0.19	0.28	0.45	0.51	0.69	0.80	1.20	1.68	4.13

Product Code: AL05

Dixon
1300 134 651
customerservice@dixonvalve.com.au
dixonvalve.com.au