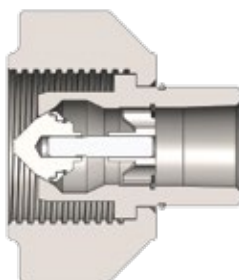


## WS-Series Blowout Prevention Safety Coupler

NEW!



Female Thread

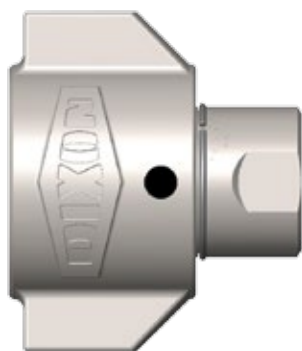


Size (inch)	Part No.		Thread Size (inch)	Body Material	Weight (kg)	Pkg Qty	Price \$ (ea)
3/4	6WSF4-BOP	i	1/2 - 14 NPTF	Steel	0.84	5	215.40
3/4	6WSF6-BOP		3/4 - 14 NPTF	Steel	0.82	5	193.75
3/4	6WSF6-SS-BOP	i	3/4 - 14 NPTF	316 SS	0.82	5	745.30
3/4	6WSBF6-BOP		3/4 - 14 BSPP	Steel	0.82	5	68.80
1	8WSF8-BOP		1 - 11 1/2 NPTF	Steel	1.50	5	224.80
1	8WSF8-SS-BOP	i	1 - 11 1/2 NPTF	316 SS	1.50	5	983.80
1	8WSBF8-BOP		1 - 11 BSPP	Steel	1.50	5	78.60
1 1/4	10WSF10-BOP		1 1/4 - 11 1/2 NPTF	Steel	2.59	1	335.34
1 1/4	10WSF10-SS-BOP	i	1 1/4 - 11 1/2 NPTF	316 SS	2.59	1	452.50
1 1/4	10WSBF10-BOP	i	1 1/4 - 11 BSPP	Steel	2.59	1	130.50
1 1/2	12WSF12-BOP		1 1/2 - 11 1/2 NPTF	Steel	4.04	1	477.65
1 1/2	12WSF12-SS-BOP	i	1 1/2 - 11 1/2 NPTF	316 SS	4.04	1	686.50
1 1/2	12WSBF12-BOP	i	1 1/2 - 11 BSPP	Steel	4.04	1	289.40
2	16WSF16-BOP	i	2 - 11 1/2 NPTF	Steel	7.76	1	946.80
2	16WSF16-SS-BOP	i	2 - 11 1/2 NPTF	316 SS	7.76	1	1893.70
2	16WSBF16-BOP	i	2 - 11 BSPP	Steel	7.76	1	1036.50

Price Group: PC

AP13

M  
243 - 304



WS Coupler With View Port Example



WS Coupler With Wrench Flats Example  
\* Wrench flats may result in reduced pressure performance.

FOR TECHNICAL GUIDELINES PLEASE REFER TO PAGE 259



Phone: 1300 134 651  
www.dixonvalve.com

ADPL2013-14

Part numbers marked "i" are non stock.  
Enquire for availability.  
All prices exclude GST.