

Shouldered Light Wall Pipe



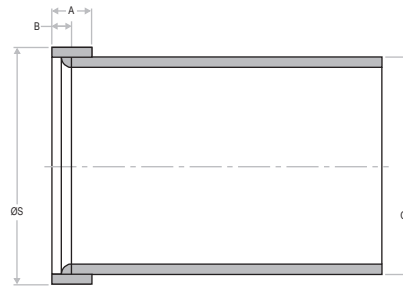
Application:	Designed for use in both underground and surface mining applications. Can also be used for water, slurry and air movement in mining, industrial and irrigation applications that are suited to a lighter walled pipe.
Features:	Robust yet lightweight for ease of handling.
Material:	Hot dipped galvanised to AS/NZS 4792 - min 300 grams/m ² .
Standards:	BS 1387:1985 - Standard specifications for screwed and socketed steel tubes and tubulars and for plain end steel tube suitable for welding and for screwing to BS21 pipe threads.

Galvanised Light Wall Pipe with Shouldered Ends (both ends).							
Part No.	Length (mtr)	Size NB	OD (mm)	Wall Thickness (mm)	WP MPa	No per bundle	Price \$ (ea)
PFHG-1143-20-SH	6.5	100	114.3	2.00	3.5	10	350.88
PFHG-1651-275-SH	6.5	150	165.1	2.75	3.5	7	667.69

Price Group: SD

PI03

Shouldered Light Wall Pipe Dimensions



Size		OD	ØS (mm)			A (mm)			B
inch	mm		basic	min	max	basic	min	max	
4	100	114.3	122.0	121.2	122.8	17.5	17.5	18.3	8
6 *	150	165.1	174.5	173.7	175.3	17.5	17.5	18.3	8

* Australian Pipe Size



* The pipe or system working pressures are limited to the published working pressures of the couplings used in the design of the pipeline