

## Minsup™ Ground Joints



The Minsup™ Ground Joint, is an all purpose coupling. The spud part of the connection is usually fixed to plant. The nut and tail are assembled onto hose with a suitable clamp. The two halves are connected or disconnected by rotating the wing nut on the spud.

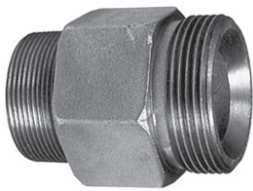
|                            |  |
|----------------------------|--|
| <b>Materials:</b>          | SG iron ISO 1083-400-250-15<br>Zinc Plated to AS1789                               |
| <b>Thread Designation:</b> | 8" TPI (Wing Nut)<br>BSP tapered Male to ISO 7-1<br>BSP Parallel Female to ISO 7-1 |

D



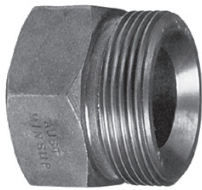
| Wing Nut |           |               |             |          |
|----------|-----------|---------------|-------------|----------|
| Nom. ID  | Size (mm) | Part No.      | Weight (kg) | Price \$ |
| 2"       | 50        | 08/014/02/007 | 0.84        | 122.35   |

Price Group: SD



| Spud Male BSP |           |               |             |          |
|---------------|-----------|---------------|-------------|----------|
| Nom. ID       | Size (mm) | Part No.      | Weight (kg) | Price \$ |
| 2"            | 50        | 08/014/02/005 | 1.22        | 112.63   |

Price Group: SD



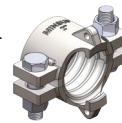
| Spud Female BSP |           |               |             |          |
|-----------------|-----------|---------------|-------------|----------|
| Nom. ID         | Size (mm) | Part No.      | Weight (kg) | Price \$ |
| 2"              | 50        | 08/014/02/002 | 0.72        | 116.34   |

Price Group: SD



| Tail    |           |               |             |          |
|---------|-----------|---------------|-------------|----------|
| Nom. ID | Size (mm) | Part No.      | Weight (kg) | Price \$ |
| 2"      | 50        | 08/014/02/008 | 0.79        | 118.26   |

Lugged to accept 08/023/03/000 Minsup™ Claw, refer to page 216.



Price Group: SD

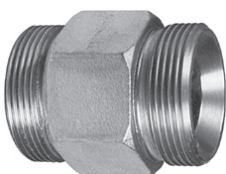


| Cor-O-Zig Tail |           |               |             |          |
|----------------|-----------|---------------|-------------|----------|
| Nom. ID        | Size (mm) | Part No.      | Weight (kg) | Price \$ |
| 2"             | 50        | 08/014/02/009 | 1.1         | 120.85   |

Designed for use with Boss™ clamps, refer pages 217-218.  
Not to be used with #250, #275 or #306 Boss™ Clamps.



Price Group: SD



| Double Spud |           |               |             |          |
|-------------|-----------|---------------|-------------|----------|
| Nom. ID     | Size (mm) | Part No.      | Weight (kg) | Price \$ |
| 2"          | 50        | 08/014/02/004 | 1.35        | 112.96   |

Price Group: SD

AC02

**Note:** Minsup™ Ground Joints are not interchangeable with the Dixon™ Ground Joints